

## UNITED STATES PUBLIC LAND SURVEY CORNER CERTIFICATE

OF

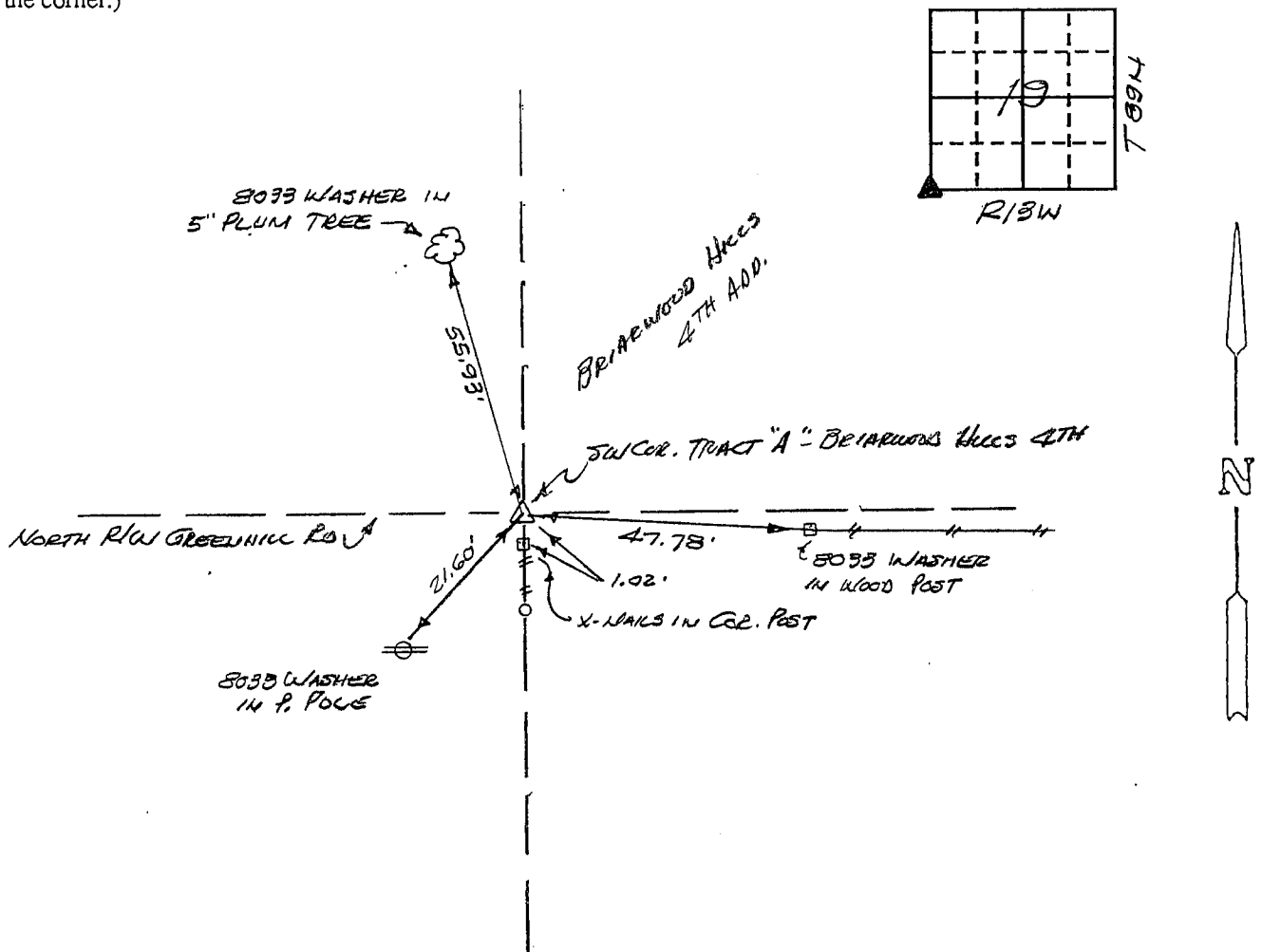
Land Survey Monuments situated in Section 19, Township 89N, Range 13W, of the Fifth Principal Meridian, BLACK HAWK County, Iowa.  
 Previously recorded in N/A (book, page, document number, etc.) in County Recorder's Office.

(Show reason for preparing this certificate, the evidence and detailed procedures used in establishing the corner positions and monumentation found or placed.)

Monument Description and Remarks: FOUND STD. CONC. MONUMENT 6" DEEP WITH  
STEEL POST & SURVEY SIGN.

## PLAN - VIEW

(Show a minimum of three reference ties to durable physical objects, relevant monuments and physical conditions that will enable recovery of the corner.)



355-17

I hereby certify that the survey work was completed and this certificate was prepared by me or under my direct personal supervision and that I am a duly registered land surveyor under the laws of the state of Iowa.

Signature: F. William King

Name typed or printed: F. WILLIAM KING

Date: 2-26-1993 Reg. No. 8033



SEAL

Corners	List Corners to be Indexed Section	Twp	Range
SW	19	89N	13W
NE	25	789N	R14W

MISC. BK. 305 p. 278