



Doc ID: 005460730001 Type: GEN
Kind: CORNER
Recorded: 05/05/2014 at 01:34:05 PM
Fee Amt: \$7.00 Page 1 of 1
Black Hawk County Iowa
JUDITH A MCCARTHY RECORDER

File 2014-00019441

ENV

WAYNE CLAASSEN ENGINEERING AND SURVEYING, INC.
P.O. BOX 898 WATERLOO, IOWA 50704-0898

PHONE: (VOICE) 319-235-6294
(FAX) 319-235-0028

UNITED STATES PUBLIC LAND SURVEY CORNER CERTIFICATE

Land Survey Monuments situated in Section 17, Township 89 North, Range 13 West, of the Fifth Principal Meridian, Black Hawk County, Iowa.

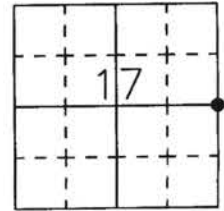
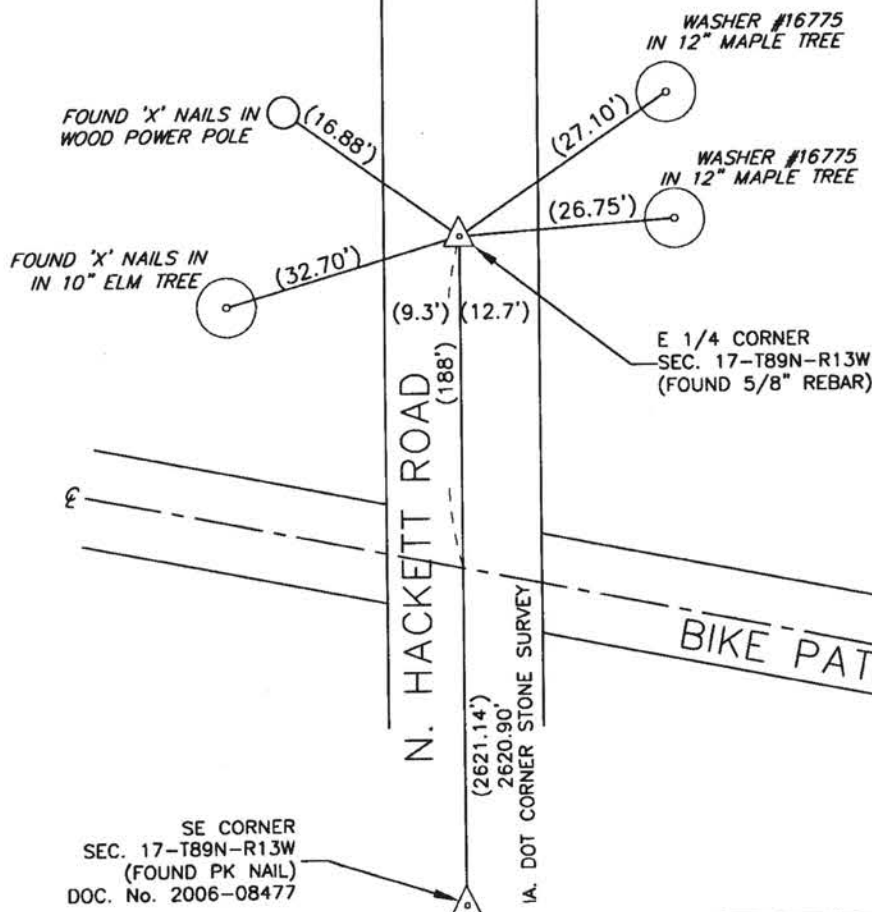
Previously recorded in _____ in County Recorder's Office.
(book, page, document number, etc.)

Monument Description and Remarks

Field notes from Black Hawk County Engineer's Office, dated July 8, 1938: "E 1/4 cor. sec. 17 - found limestone 13 1/2"x 13 1/2"x 8" lowered same set C.M. on 12" deep. Found top half of S.C.M. lying on side of road. Found 5/8" rebar and accepted as corner since it reasonably matches Ia. DOT Corner Stone Survey. This certificate was filed because there is no certificate on file.

000.00 DENOTES RECORD DIMENSION FROM
(000.00) IDOT CORNER STONE SURVEY
DENOTES FIELD DIMENSION

PLAN - VIEW



677-66

I hereby certify that this land surveying document was prepared and the related survey work was performed by me or under my direct personal supervision and that I am a duly Licensed Land Surveyor under the laws of the State of Iowa.

Signature: _____

David L. Scheil, L.S.

Date: April 29, 2014 Lic. No. 16775

Pages or Sheets Covered by this Seal: THIS SHEET ONLY.

My license renewal date is December 31, 2014

SEAL

List Corners to be Indexed

Corners	Section	Twp	Range
E 1/4 CORNER,	17	89 N	13 W
W 1/4 CORNER,	16	89 N	13 W



File 2014-00019441 Seq: 1

(1700)