

Jeffrey P. Helland, 1107 Technology Parkway, Cedar Falls, Iowa 50613-6951, (319)-266-0161

UNITED STATES PUBLIC LAND SURVEY CORNER CERTIFICATE OF

LAND SURVEY MONUMENTS SITUATED IN SECTION NO. 17, TOWNSHIP NO. 89 NORTH, RANGE
NO. 13 WEST OF THE FIFTH PRINCIPAL MERIDIAN, BLACK HAWK COUNTY, IOWA.
PREVIOUSLY RECORDED IN N/A

(SHOW REASON FOR PREPARING THIS CERTIFICATE, THE EVIDENCE AND DETAILED PROCEDURES USED IN ESTABLISHING THE
CORNER POSITIONS AND MONUMENTATION FOUND OR PLACED.)

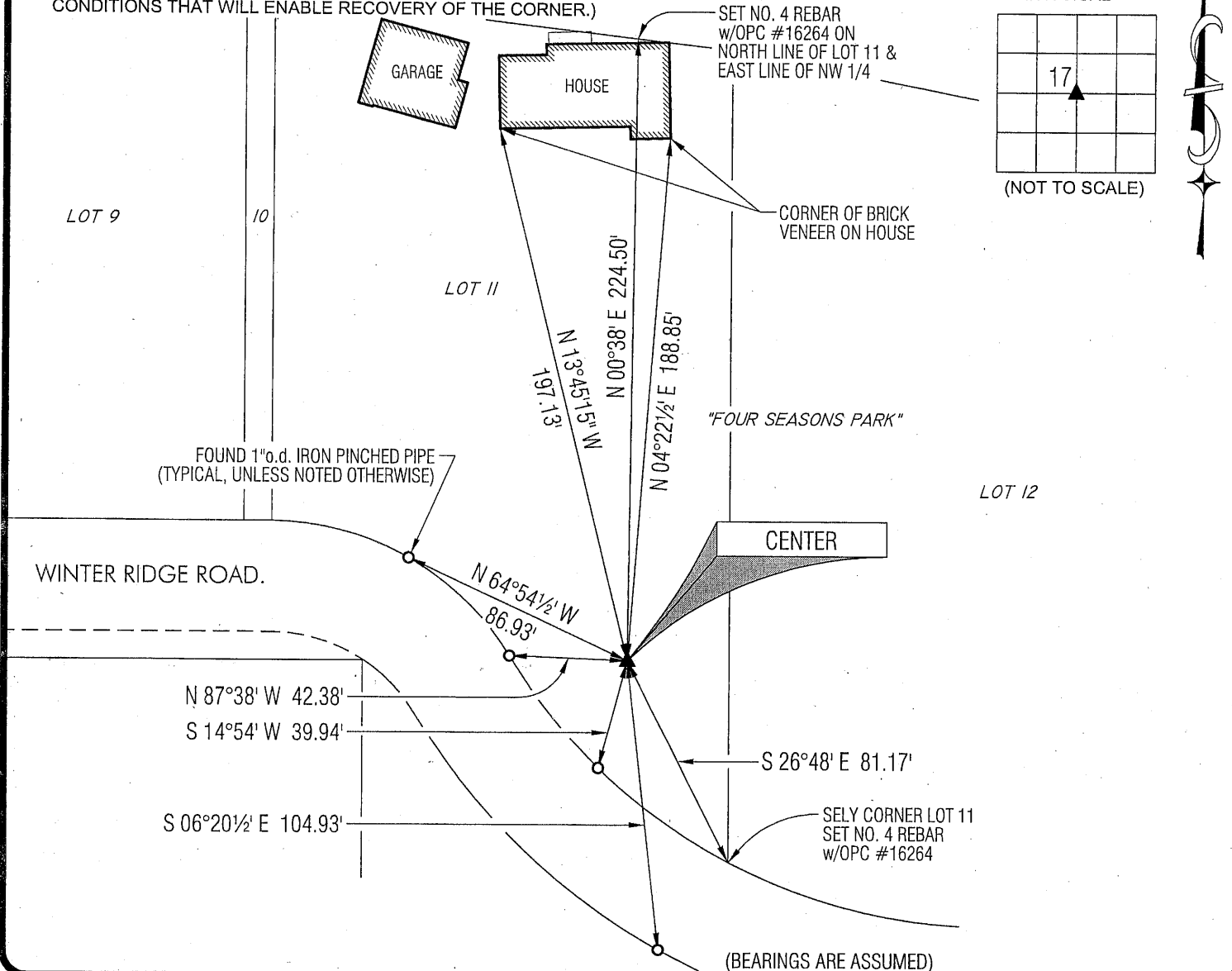
MONUMENT DESCRIPTION AND REMARKS:

NO USPLSCC ON FILE. SURVEY COMPLETED IN FOUR SEASONS PARK.

→ CENTER: NO BLACK HAWK COUNTY ENGINEER REFERENCE TIES AVAILABLE. PLAT OF FOUR SEASONS PARK DATED MAY
1949 SHOWS CORNER BUT DOES NOT STATE WHAT WAS UTILIZED. FOUND $0.5' \pm$ (N-S) $\times 0.7' \pm$ (E-W) (TOP VIEW) GREEN
GRANITE STONE w/HIGH POINT $0.5' \pm$ DEEP. ALSO FOUND 1" o.d. IRON PIPE 0.25' SOUTH & 0.05' EAST OF POINT UTILIZED ON
STONE.

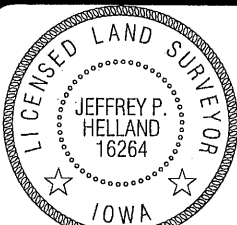
PLAN VIEW

(SHOW A MINIMUM OF THREE REFERENCE TIES TO DURABLE PHYSICAL OBJECTS, RELEVANT MONUMENTS AND PHYSICAL
CONDITIONS THAT WILL ENABLE RECOVERY OF THE CORNER.)



HELLAND ENGINEERING & SURVEYING, LTD.
1107 Technology Parkway
Cedar Falls, Iowa 50613-6951
(319)-266-0161

SHINER = 8D NAIL & 1 5/16" Ø METAL SHINER
BRASS TAG = 8D NAIL & 13/16" Ø BRASS TAG
OPC = PLASTIC CAP (O=ORANGE, R=RED, Y=YELLOW)
(00') RECORDED AS FILE NAME: 10-154C1.DWG



I hereby certify that this land surveying document was prepared
and the related survey work was performed by me or under my
direct personal supervision and that I am a duly licensed Land
Surveyor under the laws of the State of Iowa.

Jeffrey P. Helland 4/23/10
Jeffrey P. Helland
License Number 16264
My license renewal date is December 31, 2011.
All pages or sheets are covered by this seal except:

LIST CORNERS TO BE INDEXED

CORNER	SECTION	TOWNSHIP	RANGE
CENTER	17	89N	13W

18.00
19.00

Rec. 1