

INDEX

BLACK HAWK COUNTY, IOWA:ss

FEE BOOK # 2006 16805

PROOF

FILED FOR RECORD JAN 4

2006

AT 10:00 A. M.

FEE 1-5.00-1.00/

COMPARED

Patricia J. Lee

BLACK HAWK COUNTY RECORDER

ENV WAYNE CLAASSEN ENGINEERING AND SURVEYING INC

WAYNE CLAASSEN ENGINEERING AND SURVEYING, INC.
P.O. BOX 898 WATERLOO, IOWA 50704-0898PHONE: (VOICE) 319-235-6294
(FAX) 319-235-0028

UNITED STATES PUBLIC LAND SURVEY CORNER CERTIFICATE

Land Survey Monuments situated in Section 14, Township 89 North, Range 13 West, of the Fifth Principal Meridian, Black Hawk County, Iowa.Previously recorded in _____ in County Recorder's Office.
(book, page, document number, etc.)

(Show reason for preparing this certificate, the evidence and detailed procedures used in establishing the corner positions and monumentation found or placed.)

Monument Description and Remarks

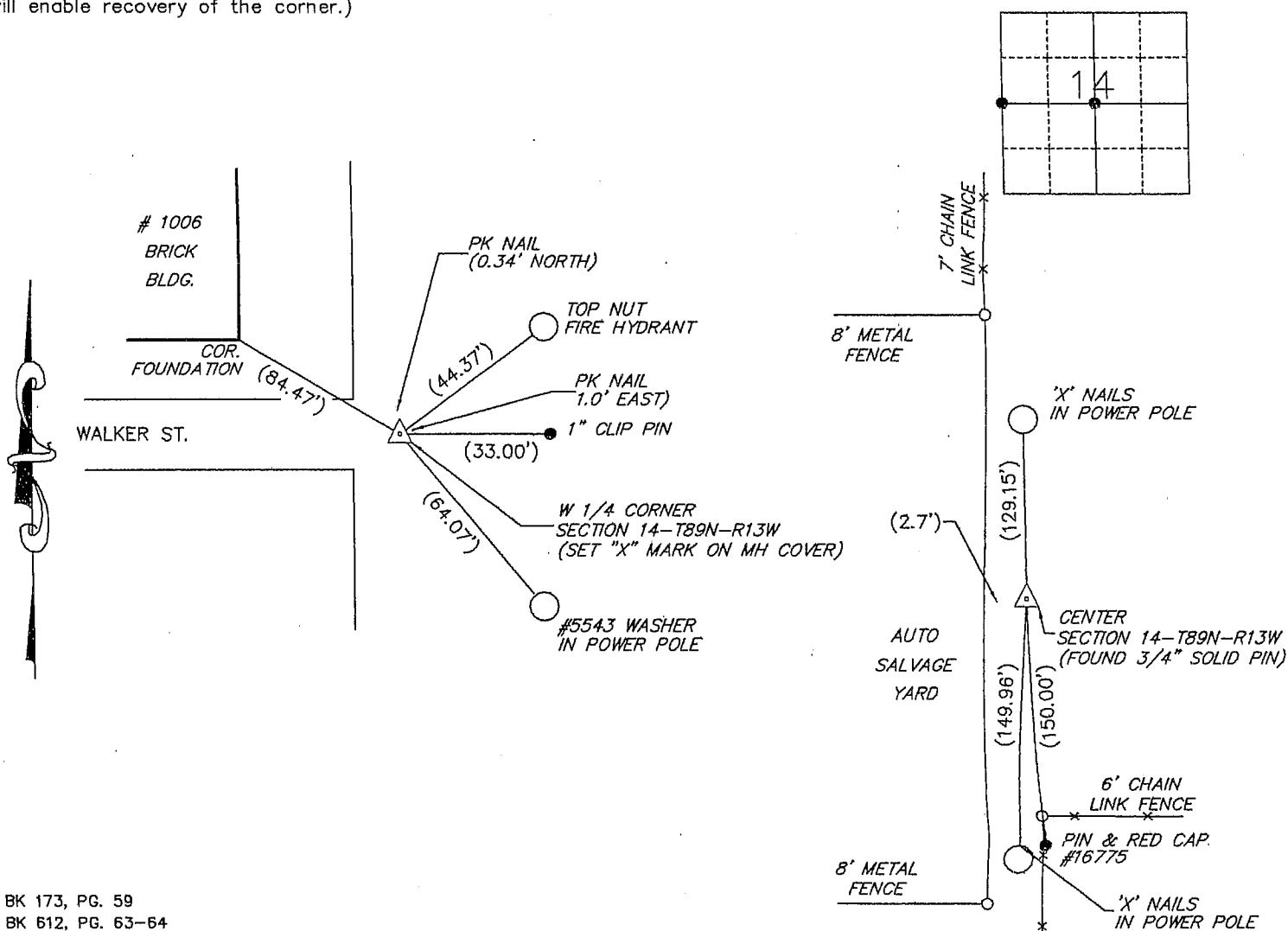
W 1/4 Corner: No corner certificate on file. Set mark on Manhole cover as per original

ties from W.H.K. & S. 1979 IDOT Railroad Relocation Project.

Center: No corner certificate on file. Found 3/4" solid pin used in 1981 survey of Allen Heights Addition.

PLAN - VIEW

(Show a minimum of three reference ties to durable physical objects, relevant monuments and physical conditions that will enable recovery of the corner.)

BK 173, PG. 59
BK 512, PG. 63-64

I hereby certify that this land surveying document was prepared and the related survey work was performed by me or under my direct personal supervision and that I am a duly Licensed Land Surveyor under the laws of the State of Iowa.

Signature: *David L. Schell*
David L. Schell, L.S.Date: JAN 03, 2006 Lic. No. 16775Pages or Sheets Covered by this Seal: THIS SHEET ONLY.

My license renewal date is December 31, 2006

SEAL

List Corners to be Indexed

Corners	Section	Twp	Range
W 1/4 CORNER,	14	89 N	13 W
CENTER,	14	89 N	13 W

