

KESS & ASSOCIATES INC

Kirk D. Eschliman, P.L.S. Iowa Lic. No. 9961, 723 Broadway Street, Waterloo, Iowa 50703 - Phone: 319-234-0509

UNITED STATES PUBLIC LAND SURVEY CORNER CERTIFICATE
OFLAND SURVEY MONUMENTS SITUATED IN SECTION FOURTEEN (14), TOWNSHIP EIGHTY-NINE (89) NORTH
RANGE THIRTEEN (13) WEST, OF THE FIFTH PRINCIPAL MERIDIAN, BLACK HAWK COUNTY, IOWA.
PREVIOUSLY RECORDED IN (NOT PREVIOUSLY RECORDED) (BOOK, PAGE, DOCUMENT NUMBER, ETC.) IN THE COUNTY RECORDER'S OFFICE.

(SHOW REASON FOR PREPARING THIS CERTIFICATE, THE EVIDENCE AND DETAILED PROCEDURES USED IN ESTABLISHING THE CORNER POSITIONS AND MONUMENTATION FOUND OR PLACED.)

MONUMENT DESCRIPTION AND REMARKS:

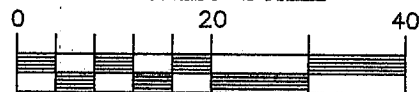
CURRENT SECTION CORNER CERTIFICATE NOT ON FILE IN THE BLACK HAWK COUNTY RECORDER'S OFFICE

FOUND LEAD PLUG WITH NAIL, AT SURFACE OF CONCRETE MEDIAN OF LOGAN AVENUE.

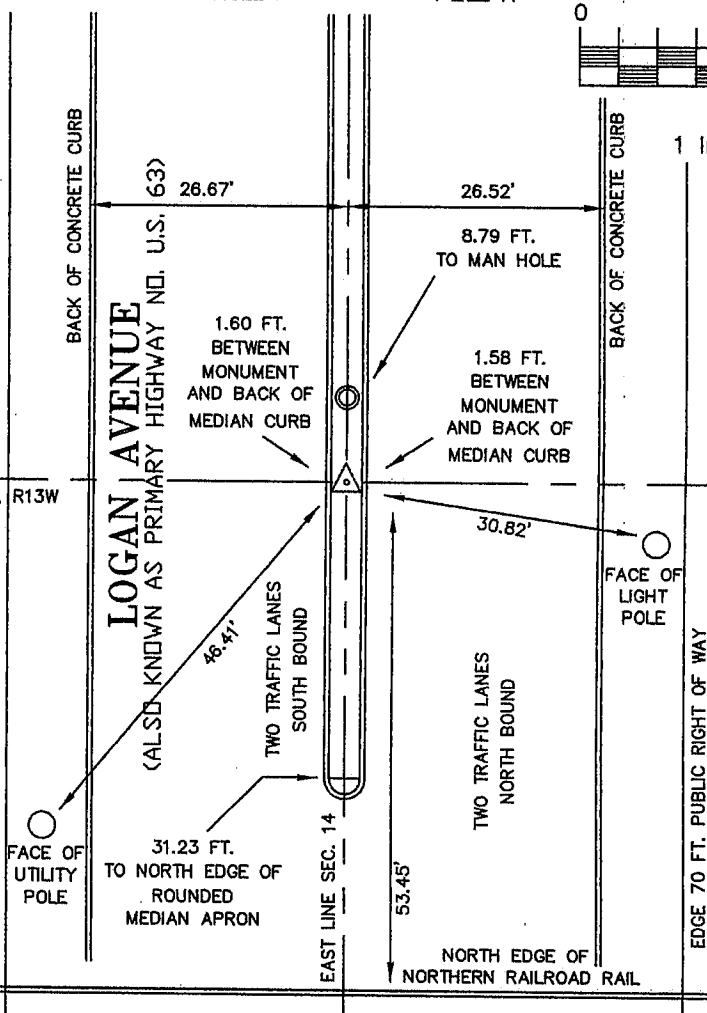
SECTION CORNER USED FOR A SURVEY IN SW 1/4, NE 1/4, SEC. 14, T89N, R13W COMPLETED ON JAN. 23, 2006.

PLAN - VIEW

GRAPHIC SCALE

NW 1/4, SEC 13
T89N, R13W
BLACK HAWK
COUNTYSW 1/4, SEC 13
T89N, R13W
BLACK HAWK
COUNTYNE 1/4, SEC 14
T89N, R13W
BLACK HAWK
COUNTY

NORTH LINE SE 1/4, SEC. 14, T89N, R13W

ALL DISTANCES
ARE FROM
SECTION CORNER
MONUMENT,
FOUND
LEAD PLUG
AT SURFACE OF
CONCRETE
MEDIANSE 1/4, SEC 14
T89N, R13WI HEREBY CERTIFY THAT THIS LAND SURVEYING DOCUMENT
WAS PREPARED AND RELATED SURVEY WORK WAS
PERFORMED BY ME OR UNDER MY DIRECT PERSONAL
SUPERVISION AND THAT I AM A DULY LICENSED LAND
SURVEYOR UNDER THE LAWS OF THE STATE OF IOWA.*Kirk D. Eschliman*

DATE: 01/31/2006

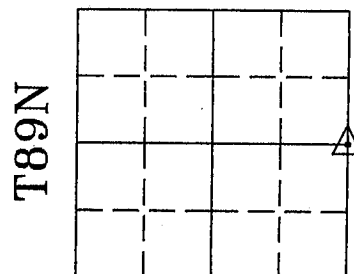
KIRK D. ESCHLIMAN, P.L.S. IOWA LIC. NO. 9961
MY LICENSE RENEWAL DATE IS DECEMBER 31, 2007
PAGES OR SHEETS COVERED BY THIS SIGNATURE & SEAL: SHEET 1 OF 1FOR: SHULTZ INDUSTRIES, INC.
1500 DAVID STREET
WATERLOO, IOWA 50703REQ. BY: BEN DEYOUNG
WATERLOO, IOWAKESS & ASSOCIATES, INC.
PROFESSIONAL LAND SURVEYORS : 723 BROADWAY, WATERLOO, IOWA 50703-5811

DATE: 01/23/2006 C.A.D.D. FILE: 05C42SCC2.DWG PROJECT NO.: 05C42

List of corners to be indexed:

Corners	Section	Township	Range
E 1/4	14	T89N	R13W

SECTION 14



R13W