

\*VJ Engineering 1501 Technology Parkway Ste 100 Cedar Falls IA 50613

UNITED STATES PUBLIC LAND SURVEY CORNER CERTIFICATE  
OF

Land Survey Monuments situated in Section 14, Township 89 N, Range 13 W, of the Fifth Principal Meridian, Black Hawk County, Iowa  
Previously recorded in Book N/A, Page         .

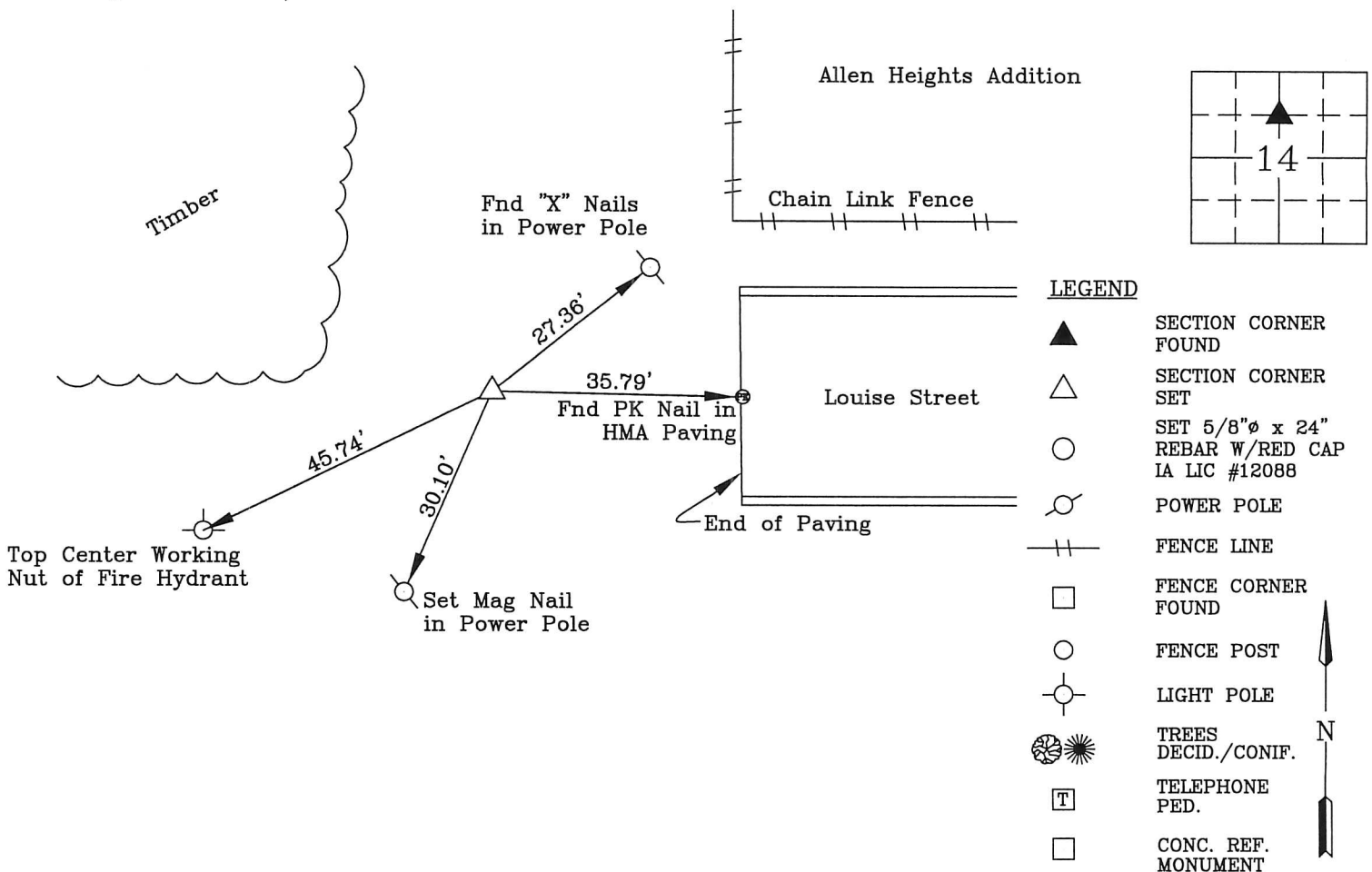
Show reason for preparing this certificate, the evidence and detailed procedures used in establishing the corner positions and monumentation found or placed.)

Monument Description and Remarks: SE Corner, NE 1/4, NW 1/4, Section 14-T89N-R13W

Allen Heights Addition shows a monument at the corner, Survey by Claassen Engineering dated 6/1/1982 calls out finding a Iron Pin at the corner, searched area and found nothing. Set 5/8"ø x 24" rebar with Red plastic cap P.L.S. #12088 at location as shown on Allen Heights Addition.  
No previous corner certificate on file.

PLAN - VIEW

(Show a minimum of three reference ties to durable physical objects, relevant monuments and physical conditions recovery of the corner.)



I hereby certify that this land surveying document was prepared and the related survey work was performed by me or under my direct personal supervision and that I am a duly licensed Land Surveyor under the laws of the State of Iowa.



Wendell J. Lupkes 11-16-15  
**WENDELL J. LUPKES, L.S.** DATE  
License number 12088  
My license renewal date is December 31, 2016  
Pages or sheets covered by this seal: 1

List Corner to be Indexed

Corner	Section	Twp	Range
SE Corner	14	89 N	13 W
NE 1/4,			
NW 1/4			



VJ Engineering  
1501 Technology Parkway  
Cedar Falls, Iowa - 319-266-5829

SECTION CORNER  
REFERENCE TIES

file no.  
15-8034  
drawn by  
MAK  
date  
7/29/15