

KESS &amp; ASSOCIATES INC

Double filed 2006-21041

Kirk D. Eschliman, P.L.S. Iowa Lic. No. 9961, 723 Broadway Street, Waterloo, Iowa 50703 - Phone: 319-234-0509

UNITED STATES PUBLIC LAND SURVEY CORNER CERTIFICATE  
OF

PLS #16775 01/02/2006

Fee Bk 2006-16805

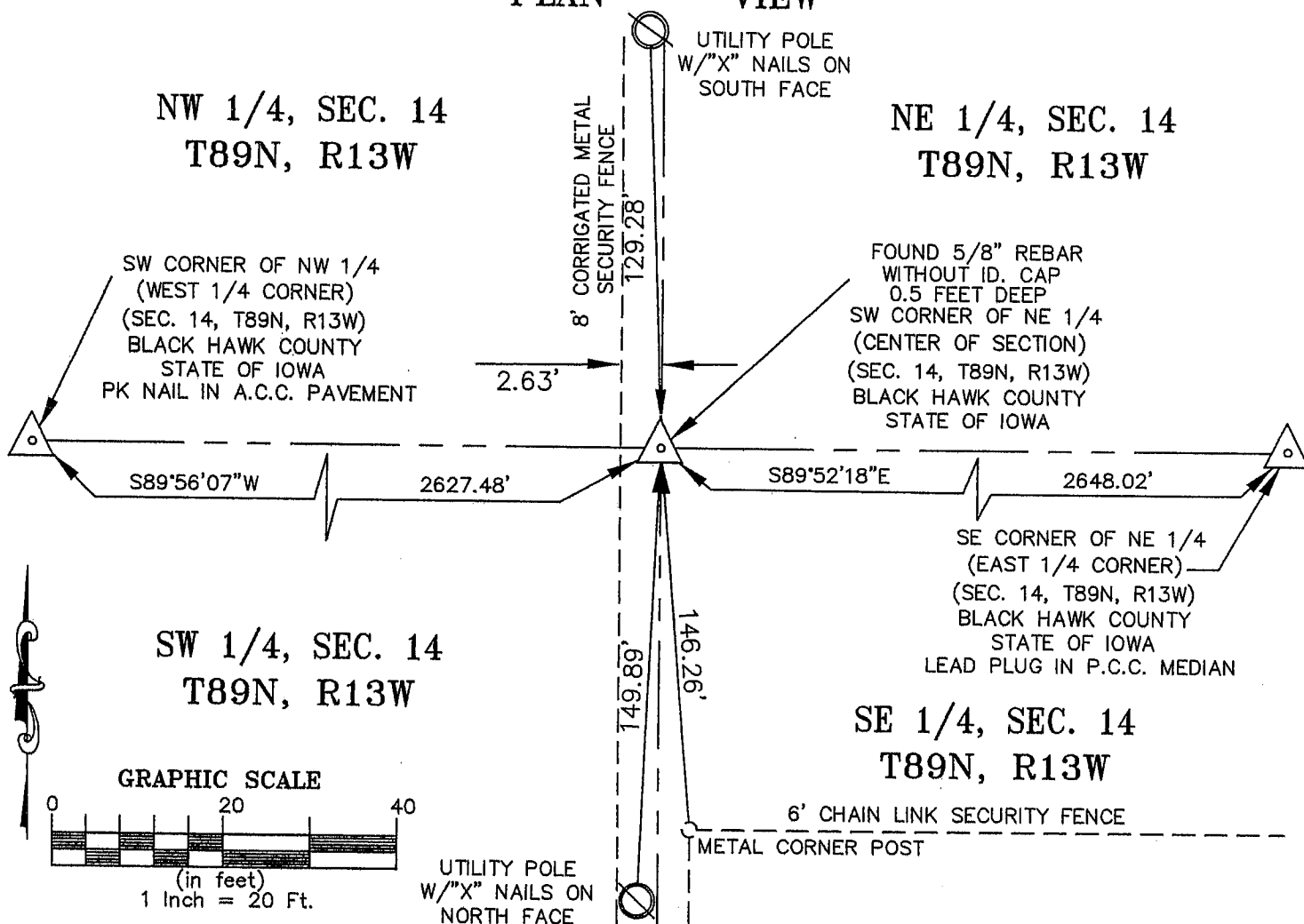
LAND SURVEY MONUMENTS SITUATED IN SECTION FOURTEEN (14), TOWNSHIP EIGHTY-NINE (89) NORTH  
RANGE THIRTEEN (13) WEST, OF THE FIFTH PRINCIPAL MERIDIAN, BLACK HAWK COUNTY, IOWA.  
PREVIOUSLY RECORDED IN (NOT PREVIOUSLY RECORDED) (BOOK, PAGE, DOCUMENT NUMBER, ETC.) IN THE COUNTY RECORDER'S OFFICE.(SHOW REASON FOR PREPARING THIS CERTIFICATE, THE EVIDENCE AND DETAILED PROCEDURES USED IN ESTABLISHING THE CORNER POSITIONS AND MONUMENTATION FOUND OR PLACED.)  
MONUMENT DESCRIPTION AND REMARKS:

NO CURRENT SECTION CORNER CERTIFICATE ON FILE IN THE BLACK HAWK COUNTY ENGINEER'S OFFICE.

FOUND 5/8TH INCH REBAR WITHOUT ID. CAP 0.5 FEET BELOW GROUND SURFACE - AS NOTED IN SURVEY BY  
WAYNE CLAASEN ENG. & SURVEYING, INC. MISC. BK. 290, PG. 726.

MONUMENT WAS USED FOR SURVEY IN SW 1/4 OF NE 1/4 OF SECT. 14, T89N, R13W

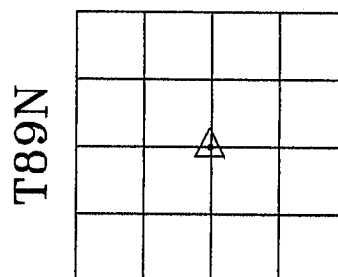
## PLAN - VIEW

I HEREBY CERTIFY THAT THIS LAND SURVEYING DOCUMENT  
WAS PREPARED AND RELATED SURVEY WORK WAS  
PERFORMED BY ME OR UNDER MY DIRECT PERSONAL  
SUPERVISION AND THAT I AM A DULY LICENSED LAND  
SURVEYOR UNDER THE LAWS OF THE STATE OF IOWA.Kirk D. Eschliman, P.L.S. DATE: 01/31/2006  
IOWA LIC. NO. 9961  
MY LICENSE RENEWAL DATE IS DECEMBER 31, 2007  
PAGES OR SHEETS COVERED BY THIS SIGNATURE & SEAL: SHEET 1 OF 1FOR: SHULTZ INDUSTRIES, INC.  
1500 DAVID STREET  
WATERLOO, IOWA 50703REQ. BY: BEN DEYOUNG  
WATERLOO, IOWAKESS & ASSOCIATES, INC.  
PROFESSIONAL LAND SURVEYORS: 723 BROADWAY, WATERLOO, IOWA 50703-5811  
DATE: 01/23/2006 C.A.D.D. FILE: 05C42SCC3.DWG PROJECT NO.: 05C42

## List of corners to be indexed:

Corners	Section	Township	Range
CENTER	14	T89N	R13W

## SECTION 14



T89N

R13W