

SLSI 9-90

UNITED STATES PUBLIC LAND SURVEY CORNER CERTIFICATE
OF

Land Survey Monuments situated in Section 12, Township 89N, Range 13W, of the Fifth Principal Meridian, BLACK HAWK County, Iowa.
Previously recorded in N/A in County Recorder's Office.

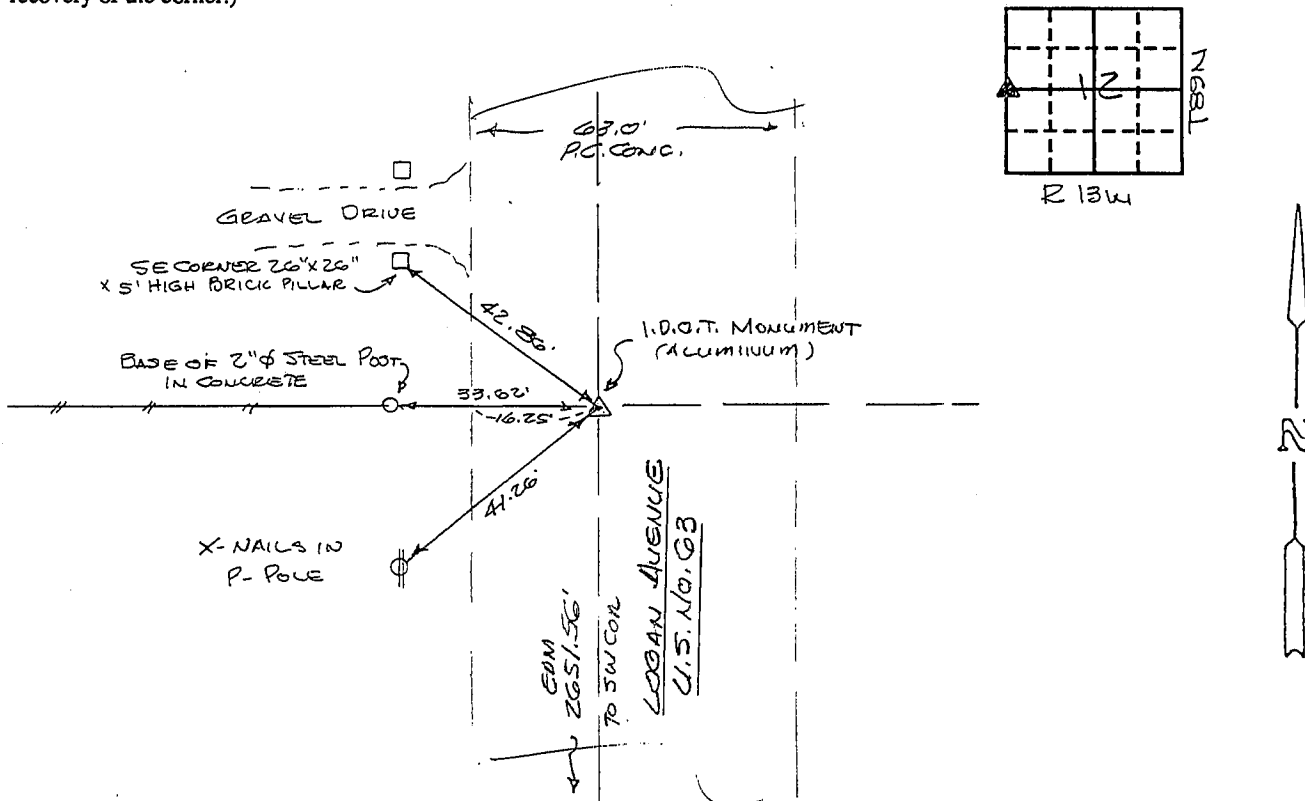
(book, page, document number, etc.)

(Show reason for preparing this certificate, the evidence and detailed procedures used in establishing the corner positions and monumentation found or placed.)

Monument Description and Remarks: FOUND D.O.T. ALUMINUM MONUMENT IN
CONCRETE PAVING. DISTANCE FROM SW CORNER TO W 1/4 CORNER AGREES
WITH CES DISTANCE OF 1980 BY O.M. 1980 MEASURE WAS MADE PRIOR TO
MOST RECENT PAVING OF US # 63.

PLAN - VIEW

(Show a minimum of three reference ties to durable physical objects, relevant monuments and physical conditions that will enable recovery of the corner.)

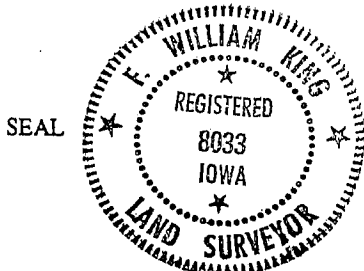


I hereby certify that the survey work was completed and this certificate was prepared by me or under my direct personal supervision and that I am a duly registered land surveyor under the laws of the state of Iowa.

Signature: F. William King
Name typed or printed: F. WILLIAM KING

Date: 6-14-1991 Reg. No. 8033

Corners	List Corners to be Indexed Section	Twsp	Range
<u>W 1/4</u>	<u>12</u>	<u>89N</u>	<u>13W</u> (AS <u>12</u>)



FWK
Rev'd 3-26-01