

Prepared by & Return to: Herold - Reicks Surveying, 2206 East Bremer Avenue, Waverly, IA 50677, Ph. 319-483-5187

United States Public Land Survey Corner Certificate

Land Survey Monument situated in  
Section 12, Township 89 North, Range 13 West of the Fifth Principal Meridian, **Black Hawk** County, Iowa.  
On file in **Book 296, Page 439** in the County Recorder's office.

This certificate is being prepared in compliance with Iowa Code Chapter 355.11 because:

- 
- ☐

There is no certificate on file for this corner.

☒

There are no longer three valid ties of record.

☐

There are changes to reference ties of record.

☐

There is change of monumentation of record.

☐

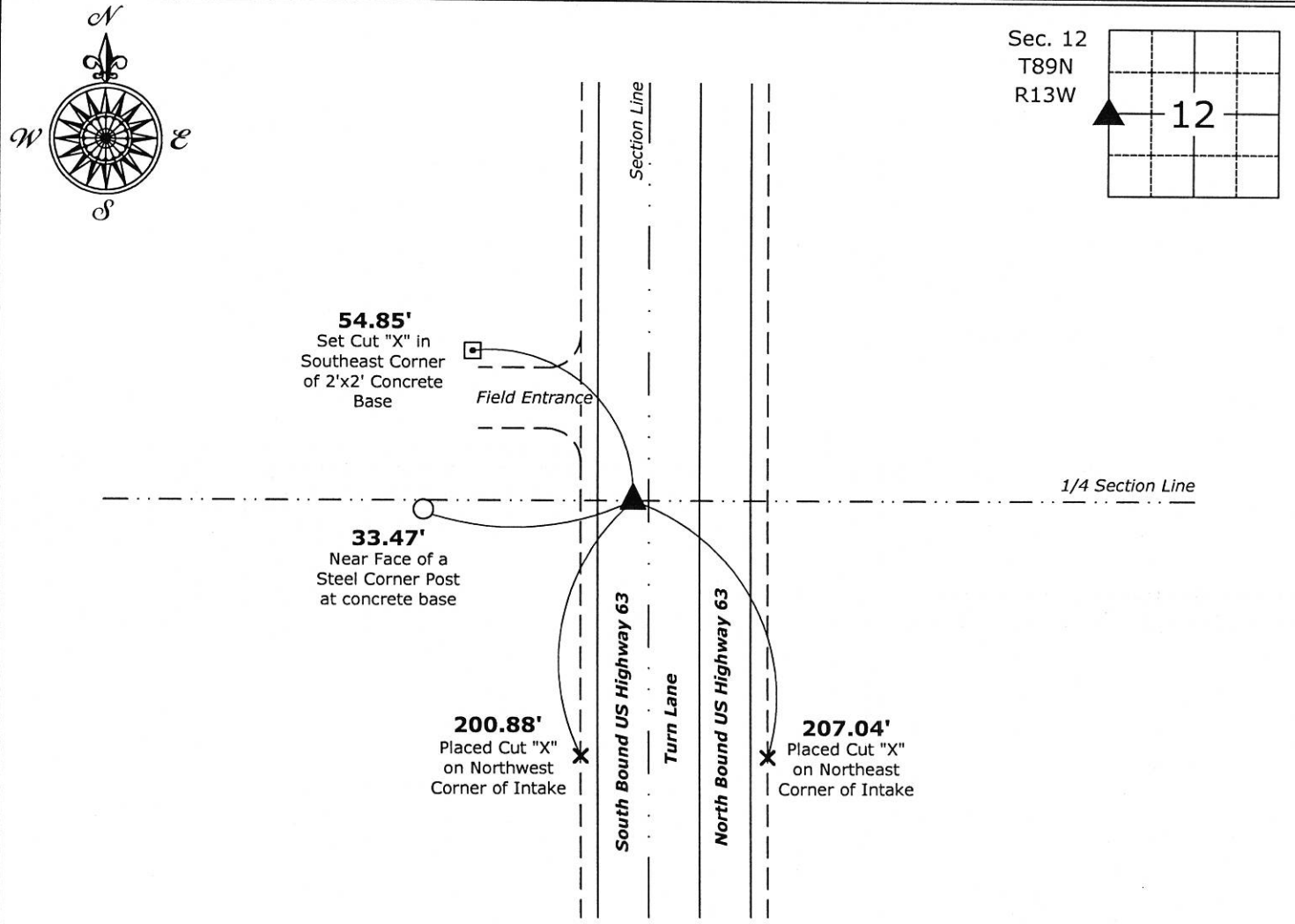
To clarify description of record monument (ties).

Monument Description and Remarks:

**West 1/4 Corner:** Found IDOT Aluminum Monument with information obtained from the previously recorded Section Corner Certificate.

Plan View

(Show a minimum of three reference ties to durable physical objects, relevant monuments and physical conditions that will enable recovery of the corner.)



West 1/4 Corner of Section 12-89-13  
Fd. IDOT Aluminum Monument



I hereby certify that this land surveying document was prepared and the related survey work was performed by me or under my direct personal supervision and that I am a duly licensed Land Surveyor under the laws of the State of Iowa.

*Isaiah M. Reicks* 5-4-18  
Isaiah M. Reicks Date:  
License number 22468  
My license renewal date is December 31, 2019.  
Sheets covered by this seal: Individual sheet only

List Corner to be Indexed			
Corner	Section	Twp.	Range
W 1/4	12	89	13
Project Number: 2017-533			
FB: Black Hawk 10, Pgs. 20-22			