

*Prepared by & Return to: Herold - Reicks Surveying, 2206 East Bremer Avenue, Waverly, IA 50677, Ph. 319-483-5187

United States Public Land Survey Corner Certificate

Land Survey Monument situated in
Section 12, Township 89 North, Range 13 West of the Fifth Principal Meridian, **Black Hawk** County, Iowa.
Not on file in the County Recorder's office.

This certificate is being prepared in compliance with Iowa Code Chapter 355.11 because:

-
- ☒

 There is no certificate on file for this corner.

☐

 There are no longer three valid ties of record.

☐

 There are changes to reference ties of record.

☐

 There is change of monumentation of record.

☐

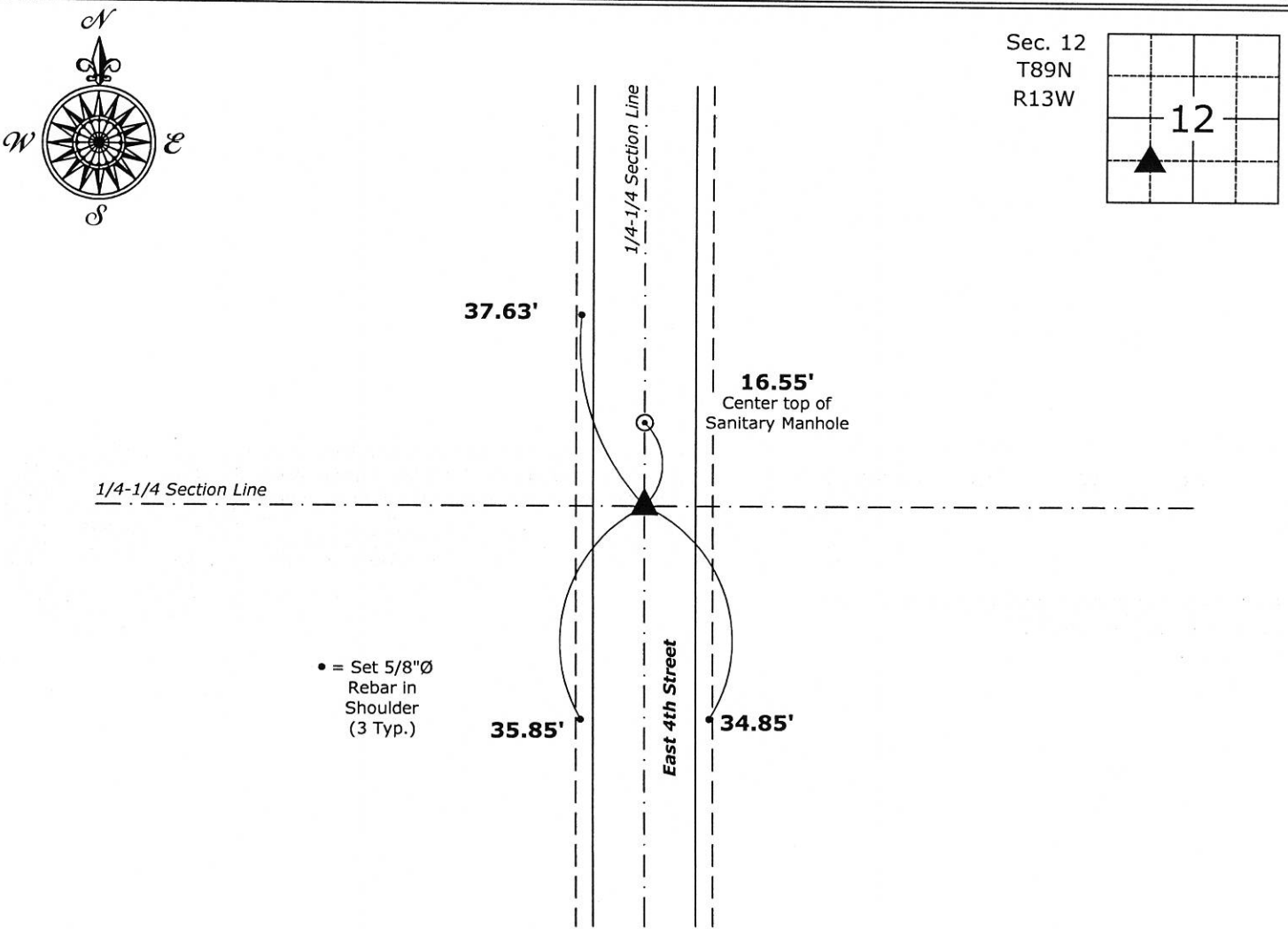
 To clarify description of record monument (ties).

Monument Description and Remarks:

Northeast Corner SW 1/4 - SW 1/4 : Found 1/2"Ø rebar with information obtained from a Survey and Plat recorded as Doc. #2008-10309.

Plan View

(Show a minimum of three reference ties to durable physical objects, relevant monuments and physical conditions that will enable recovery of the corner.)



Northeast Corner SW 1/4 - SW 1/4 of Section 12-89-13
Fd. 1/2"Ø rebar



I hereby certify that this land surveying document was prepared and the related survey work was performed by me or under my direct personal supervision and that I am a duly licensed Land Surveyor under the laws of the State of Iowa.

Isaiah M. Reicks 5-4-19
Isaiah M. Reicks Date:
License number 22468
My license renewal date is December 31, 2019.
Sheets covered by this seal: Individual sheet only

List Corner to be Indexed			
Corner	Section	Twp.	Range
NE-SW-SW	12	89	13
Project Number: 2017-533			
FB: Black Hawk 10, Pgs. 20-22			