

\*Prepared by & Return to: Herold - Reicks Surveying, 2206 East Bremer Avenue, Waverly, IA 50677, Ph. 319-483-5187

United States Public Land Survey Corner Certificate

Land Survey Monument situated in  
Section 12, Township 89 North, Range 13 West of the Fifth Principal Meridian, **Black Hawk** County, Iowa.  
On file in **Book 296, Page 441** in the County Recorder's office.

This certificate is being prepared in compliance with Iowa Code Chapter 355.11 because:

- {
- ☐

There is no certificate on file for this corner.
- ☒

There are no longer three valid ties of record.
- ☐

There are changes to reference ties of record.
- ☐

There is change of monumentation of record.
- ☐

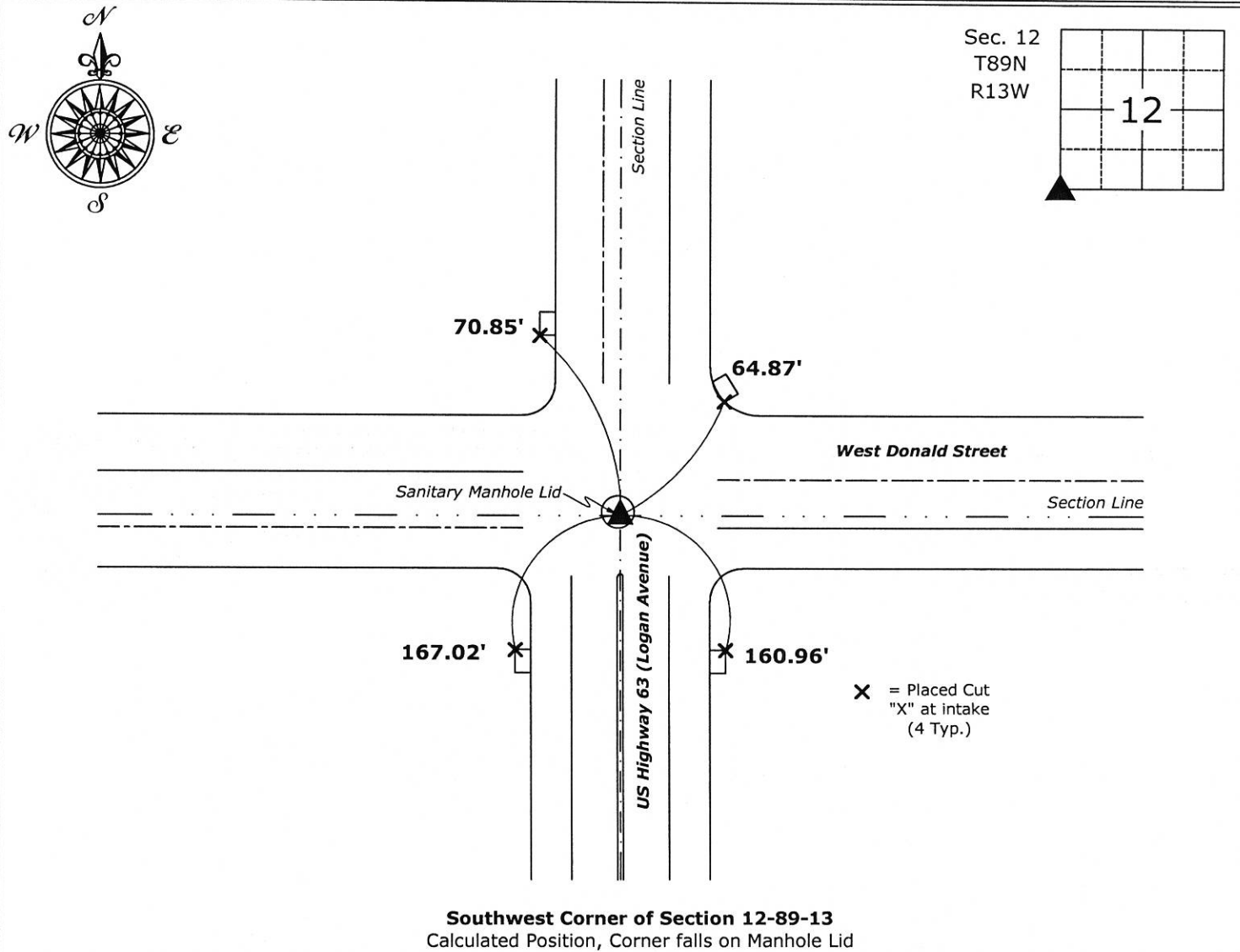
To clarify description of record monument (ties).

Monument Description and Remarks:

**Southwest Corner:** Calculated Position at the record location as shown on a Survey and Plat recorded as Doc. #2012-23157 as Corner Falls on Manhole Lid.

Plan View

(Show a minimum of three reference ties to durable physical objects, relevant monuments and physical conditions that will enable recovery of the corner.)



I hereby certify that this land surveying document was prepared and the related survey work was performed by me or under my direct personal supervision and that I am a duly licensed Land Surveyor under the laws of the State of Iowa.

*Isaiah M. Reicks* 5-4-18  
Isaiah M. Reicks Date:  
License number 22468  
My license renewal date is December 31, 2019.  
Sheets covered by this seal: Individual sheet only

List Corner to be Indexed			
Corner	Section	Twp.	Range
SW	12	89	13
Project Number: 2017-533			
FB: Black Hawk 10, Pgs. 20-22			