

Date

SLSI 9-90

UNITED STATES PUBLIC LAND SURVEY CORNER CERTIFICATE

OF

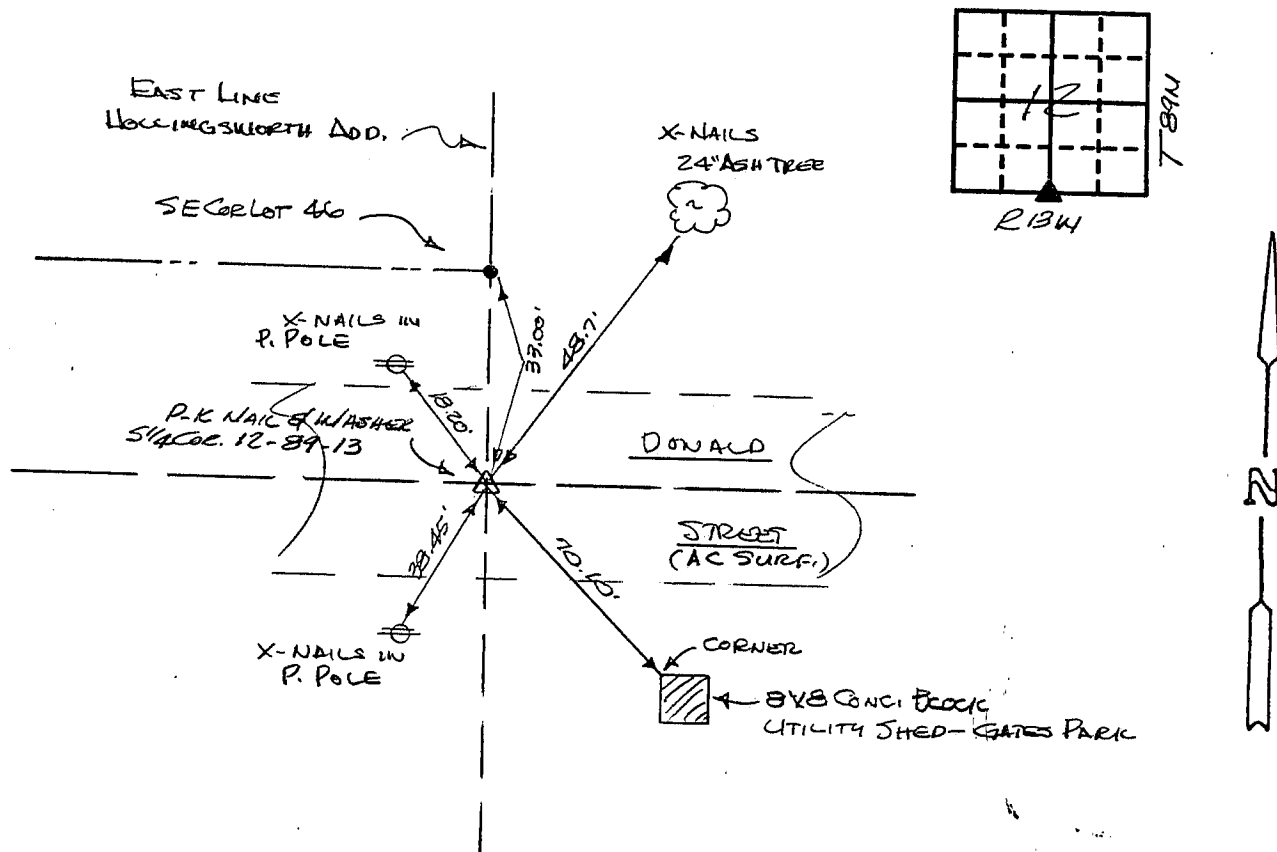
Land Survey Monuments situated in Section 12, Township 89N, Range 13W, of the Fifth Principal Meridian, BLACK HAWK County, Iowa.
Previously recorded in N/A in County Recorder's Office.
(book, page, document number, etc.)

Show reason for preparing this certificate, the evidence and detailed procedures used in establishing the corner positions and monumentation found or placed.)

Monument Description and Remarks: P.K. NAIL & WASHER SET IN ASPHALT ESTABLISHED FROM CES TIES OF 1900. CES RESET CORNER IN 1990 USING PINS ON EAST LINE HOLLINGSWORTH ADD. ADDITIONAL PLAT OF 1954.

PLAN - VIEW

(Show a minimum of three reference ties to durable physical objects, relevant monuments and physical conditions that will enable recovery of the corner.)



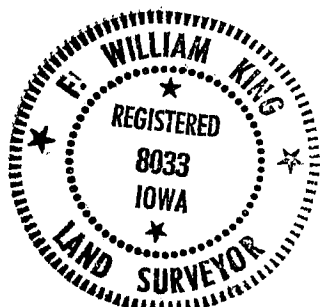
I hereby certify that the survey work was completed and this certificate was prepared by me or under my direct personal supervision and that I am a duly registered land surveyor under the laws of the state of Iowa.

Signature: F. William King
Name typed or printed: F. WILLIAM KING

Date: 6-14-1991 Reg. No. 8033

| Corners | List Corners to be Indexed | Section | Twp | Range |
|---------|----------------------------|---------|-----|-------|
| 5/4 | 12 | 89N | 13W | |

SEAL



MISC. BK. 296 p. 443