

SC  
MISC  
INDEX  
MARGIN  
PROOF  
COMPARE

BLACK HAWK COUNTY IOWA:ss  
Filed for record DEC 20, 2001 at  
4:00 P. M. and recorded in Book 345  
of MISC at page 95.

016663

*Patricia J. Lass* Recorder  
FEE 1-5.00/  
PRANGE SURVEYING

PREPARED BY: PRANGE SURVEYING, 3304 PANTHER LANE, CEDAR FALLS, IOWA 50613

SLSI 9-94  
CERT 12-96

UNITED STATES PUBLIC LAND SURVEY CORNER CERTIFICATE OF  
Land Survey Monuments situated in Section 12, Township 89 North,  
Range 13 West, of the Fifth Principal Meridian, Black Hawk County, Iowa.  
Previously recorded in Book     , Page     , in County Recorder's Office.

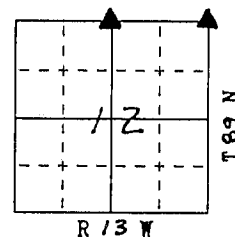
(Show reason for preparing this certificate, the evidence and detailed procedures used in establishing the corner positions and monumentation found or placed.)

Monument Description and Remarks: N<sup>1</sup>/<sub>4</sub> Cor. - Found Gas Pipe 8" deep.  
NE Cor. - Found Pinched Gas Pipe 6" deep.

### PLAN - VIEW

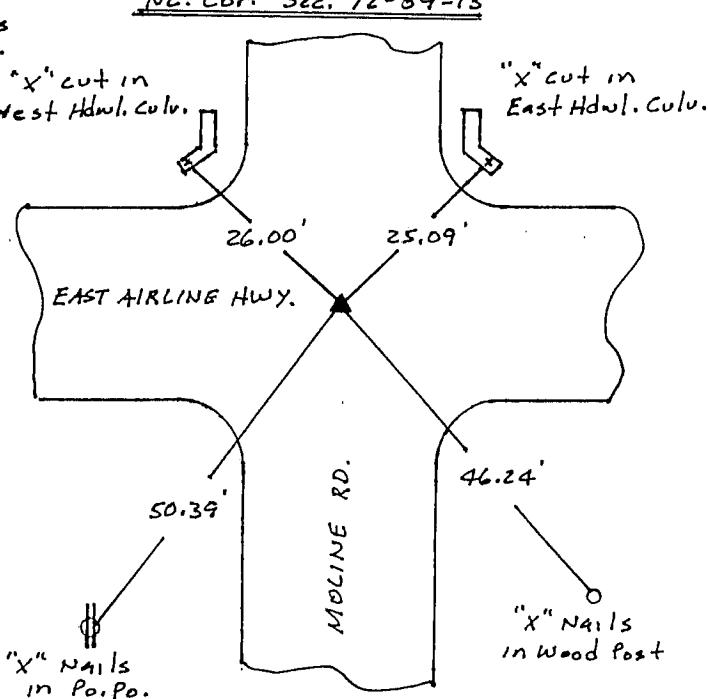
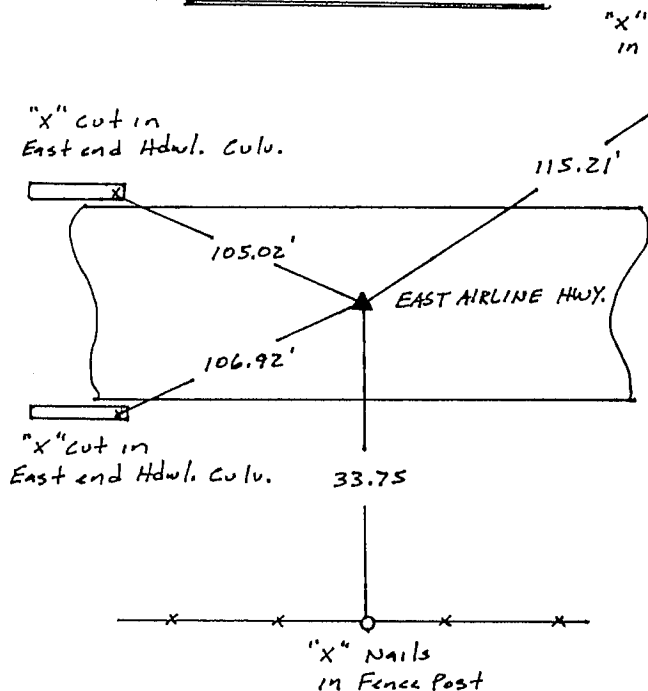
(Show a minimum of three reference ties to durable physical objects, relevant monuments and physical conditions that will enable recovery of the corner.)

NOT TO SCALE



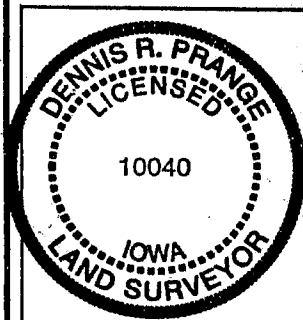
N<sup>1</sup>/<sub>4</sub> Cor. Sec. 12-89-13

NE Cor. Sec. 12-89-13



FIELD SURVEY: November 29, 2001  
PREPARED BY: Dennis R. Prange

### CERTIFICATION



I hereby certify that this land surveying document was prepared and the related survey work was performed by me or under my direct personal supervision and that I am a duly licensed Land Surveyor under the laws of the State of Iowa.

Dennis R. Prange December 9, 2001 (date)

License Number 10040

My license renewal date is December 31, 2002

Pages or sheets covered by this seal:

This Land Corner Certificate Only.

### LIST CORNERS TO BE INDEXED

Corner	Section	Township	Range
N <sup>1</sup> / <sub>4</sub> Cor.	12	89 N	13 W
NE Cor.	12	89 N	13 W