

PROOF FILED FOR RECORD SEP 24 2002 AT 3:00P. M. FEE 1-5.00/

COMPARED

Patricia A. Jess

BLACK HAWK COUNTY RECORDER

WAYNE CLAASSEN ENGINEERING AND SURVEYING INC

WAYNE CLAASSEN ENGINEERING AND SURVEYING, INC.
P.O. BOX 898 WATERLOO, IOWA 50704-0898PHONE: (VOICE) 319-235-6294
(FAX) 319-235-0028

UNITED STATES PUBLIC LAND SURVEY CORNER CERTIFICATE

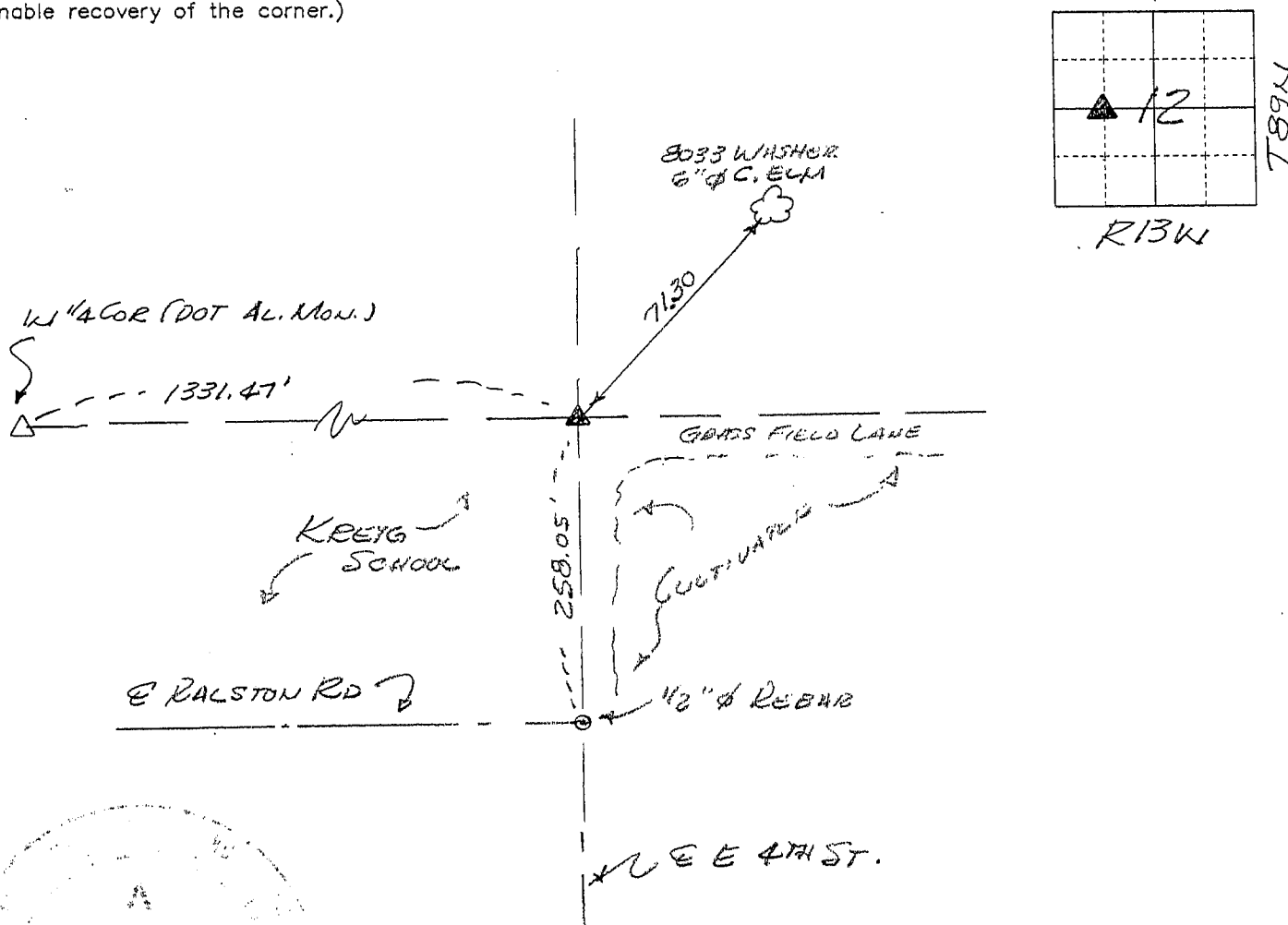
Land Survey Monuments situated in Section 12, Township 89N, Range 13W, of the Fifth Principal Meridian, BLACK HAWK County, Iowa.Previously recorded in N/A in County Recorder's Office.
(book, page, document number, etc.)

(Show reason for preparing this certificate, the evidence and detailed procedures used in establishing the corner positions and monumentation found or placed.)

Monument Description and Remarks NE COR. NW 1/4 SW 1/4, FOUND 1" Ø CLIP PIPE
2" DEEP IN GRASS AREA EAST OF KRIEG SCHOOL.

PLAN - VIEW

(Show a minimum of three reference ties to durable physical objects, relevant monuments and physical conditions that will enable recovery of the corner.)



I hereby certify that the survey work was completed and this certificate was prepared by me or under my direct personal supervision and that I am a duly licensed land surveyor under the laws of the state of Iowa.

Signature: *F. William King*

(Name typed or printed:)

Date: 9-23-02Lic. No. 8033

SEAL

List Corners to be Indexed

Corners	Section	Twp	Range
NE COR NW 1/4 SW 1/4	12	89N	13W

