

Number: 202200021534  
Recorded: 5/9/2022 at 11:17:09.0 AM  
County Recording Fee: \$7.00  
Iowa E-Filing Fee: \$3.00  
Combined Fee: \$10.00  
Revenue Tax:  
Sandie L. Smith, RECORDER  
Black Hawk County, Iowa

Prepared by & Return to: Herold - Reicks Surveying, 2206 East Bremer Avenue, Waverly, IA 50677, Ph. 319-483-5187

United States Public Land Survey Corner Certificate

Land Survey Monument situated in  
Section 11, Township 89 North, Range 13 West of the Fifth Principal Meridian, Black Hawk County, Iowa.  
On file in Book 328, Page 294 in the County Recorder's Office.

This certificate is being prepared in compliance  
with Iowa Code Chapter 355.11 because:

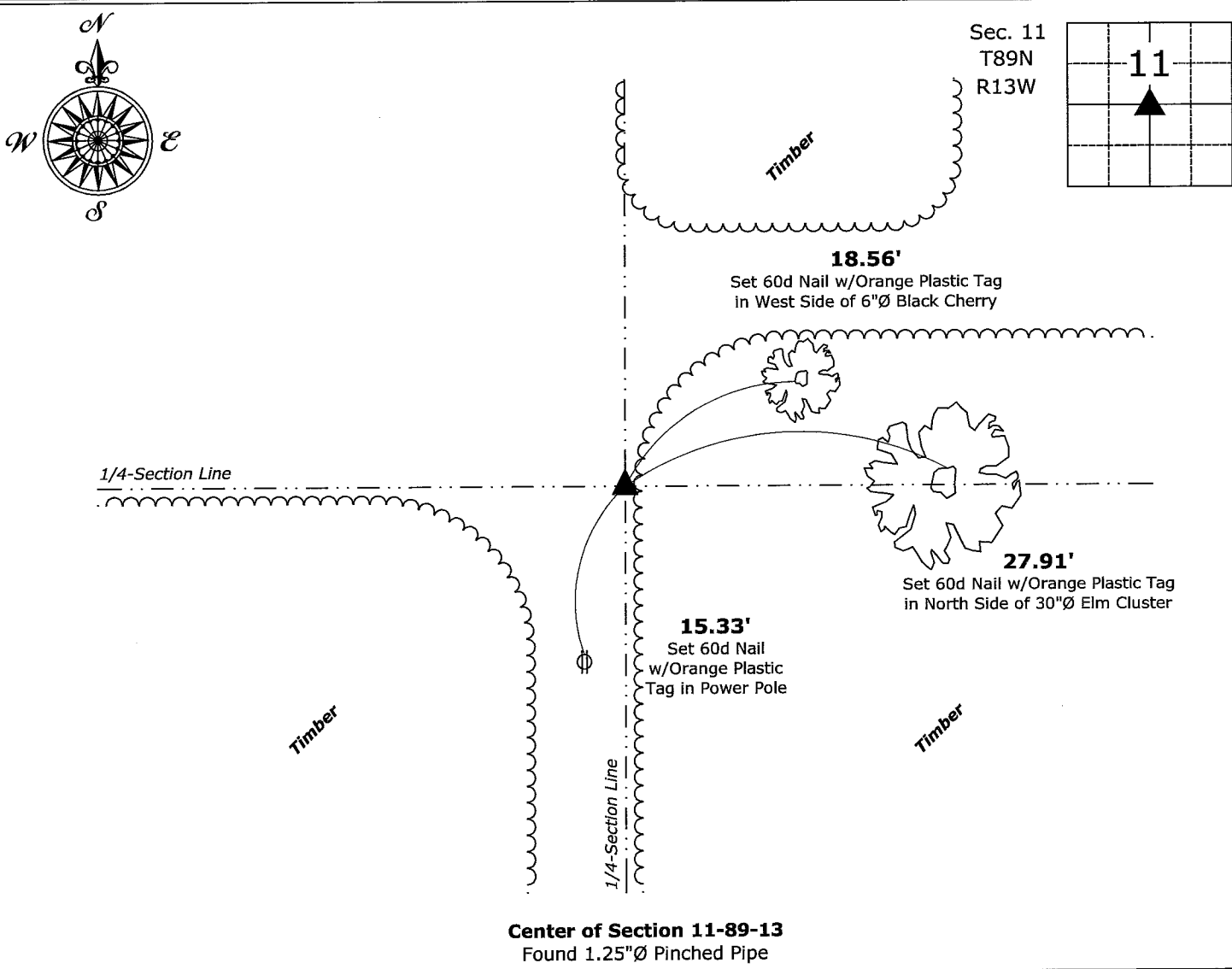
- ☐ There is no certificate on file for this corner.  
☒ There are no longer three valid ties of record.  
☐ There are changes to reference ties of record.  
☐ There is change of monumentation of record.  
☐ To clarify description of record monument (ties).

Monument Description and Remarks:

Center of Section: Found 1.25"Ø Pinched Pipe with information obtained from the previously recorded Section  
Corner Certificate.

Plan View

(Show a minimum of three reference ties to durable physical objects, relevant monuments and physical conditions that will enable recovery of the corner.)



I hereby certify that this land surveying document  
was prepared and the related survey work was  
performed by me or under my direct personal  
supervision and that I am a duly licensed Land  
Surveyor under the laws of the State of Iowa.  
*Isaiah M. Reicks* 5-4-22  
Isaiah M. Reicks Date:  
License number 22468  
My license renewal date is December 31, 2023.  
Sheets covered by this seal: Individual sheet only

List Corner to be Indexed			
Corner	Section	Twp.	Range
CTR	11	89	13
Project Number: 2022-519			
FB: Black Hawk 1, Pgs. 36-37			