

Reserved for County Recorder's use.

Kyle J. Helland, 6109 Chancellor Drive, Cedar Falls, Iowa 50613-6916, (319)-266-0161

## UNITED STATES PUBLIC LAND SURVEY CORNER CERTIFICATE OF

LAND SURVEY MONUMENTS SITUATED IN SECTION NO. 10, TOWNSHIP NO. 89 NORTH, RANGE  
NO. 13 WEST OF THE FIFTH PRINCIPAL MERIDIAN, BLACK HAWK COUNTY, IOWA.  
PREVIOUSLY RECORDED IN N/A

(SHOW REASON FOR PREPARING THIS CERTIFICATE, THE EVIDENCE AND DETAILED PROCEDURES USED IN ESTABLISHING THE  
CORNER POSITIONS AND MONUMENTATION FOUND OR PLACED.)

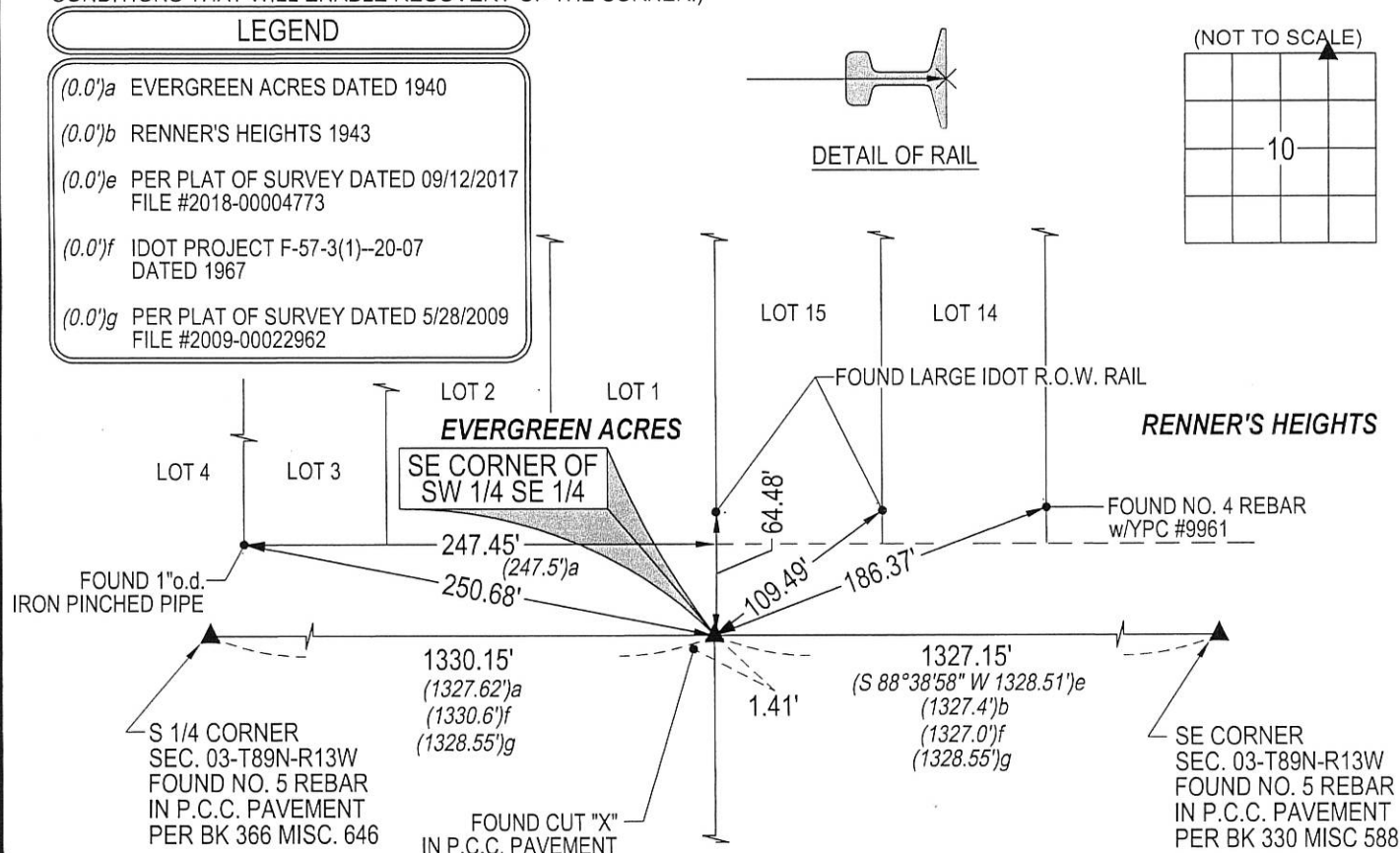
### MONUMENT DESCRIPTION AND REMARKS:

NO USPLSCC ON FILE. SURVEY COMPLETED IN THE SE 1/4 OF SEC. 3-T89N-R13W.

→ **NE CORNER NW 1/4 NE 1/4:** NO BLACK HAWK COUNTY TIES AVAILABLE OR ANY USPLSCC ON FILE. FINAL PLAT OF  
EVERGREEN ACRES, DATED MAY 1940, INDICATES "X". FINAL PLAT OF RENNER'S HEIGHTS, DATED 1943, SHOWS  
LOCATION BUT DOES NOT STATE IF ANYTHING WAS FOUND OR SET. IOWA STATE HIGHWAY PLANS (F-57-3(1)-20-07),  
DATED 1967, SHOW R.O.W. RAILS NORTH AND SOUTH OF THE 1/4 1/4 CORNER. STATIONING IS SHOWN FROM THE N 1/4  
CORNER, 1330.6' AND TO THE NORTHEAST CORNER 1327.0'. PLAT OF SURVEY, FILE #2009-00022962, DATED 6/1/2009,  
SHOWS CORNER BEING AT THEORETICAL SPLIT BETWEEN THE NORTH 1/4 CORNER AND THE NORTHEAST OF SECTION  
AND DOES INDICATE A SET "X". NO USPLSCC WAS FILED FOR THIS SURVEY. PLAT OF SURVEY, DATE 9/12/2017,  
RECORDED IN FILE 2018-00004773, SHOWS CORNER, A SET CUT "X", DOES NOT SHOW HOW LOCATION WAS  
ESTABLISHED. NO USPLSCC WAS FILED FOR THIS SURVEY. SEARCHED AREA AND FOUND CUT "X" IN P.C.C. PAVING  
PER SAID PLAT OF SURVEY. HOWEVER, BASED ON THE FOUND MONUMENTS OF EVERGREEN ACRES AND RENNER'S  
HEIGHTS AND R.O.W. RAIL, THE TRUE CORNER WOULD BE 0.1' NORTH AND 1.4' EAST OF SAID CUT "X". THIS LOCATION  
FITTING THAT OF STATIONING PER IOWA STATE HIGHWAY PLANS (F-57-3(1)-20-07) WITHIN REASON. SET NEW "X".

### PLAN VIEW

(SHOW A MINIMUM OF THREE REFERENCE TIES TO DURABLE PHYSICAL OBJECTS, RELEVANT MONUMENTS AND PHYSICAL  
CONDITIONS THAT WILL ENABLE RECOVERY OF THE CORNER.)



(BEARINGS ARE ASSUMED)



**HELLAND ENGINEERING & SURVEYING, LTD.**  
6109 Chancellor Drive  
Cedar Falls, Iowa 50613-6916  
(319)-266-0161

BRASS TAG = 4d. NAIL & 13/16"Ø BRASS TAG DRAWN BY: KDA  
SHINER = 1"Ø STEEL SHINER w/MASONRY NAIL  
OPC = PLASTIC CAP (O=ORANGE, R=RED, Y=YELLOW)  
(00') RECORDED AS FILE NAME: 20-152-43.DWG



I hereby certify that this land surveying document was prepared  
and the related survey work was performed by me or under my  
direct personal supervision and that I am a duly licensed  
Professional Land Surveyor under the laws of the State of Iowa.

*Kyle J. Helland* 07/10/2022  
Kyle J. Helland  
License Number 23212  
My license renewal date is December 31, 2021.  
All pages or sheets are covered by this seal except:

### LIST CORNERS TO BE INDEXED

CORNER	SECTION	TOWNSHIP	RANGE
NE COR. NW 1/4 NE 1/4	10	89N	13W
SE COR. SW 1/4 SE 1/4	3	89N	13W
SW COR. SE 1/4 SE 1/4	3	89N	13W
NW COR. NE 1/4 NE 1/4	10	89N	13W