

on * VJ Engineering

UNITED STATES PUBLIC LAND SURVEY CORNER CERTIFICATE
OF

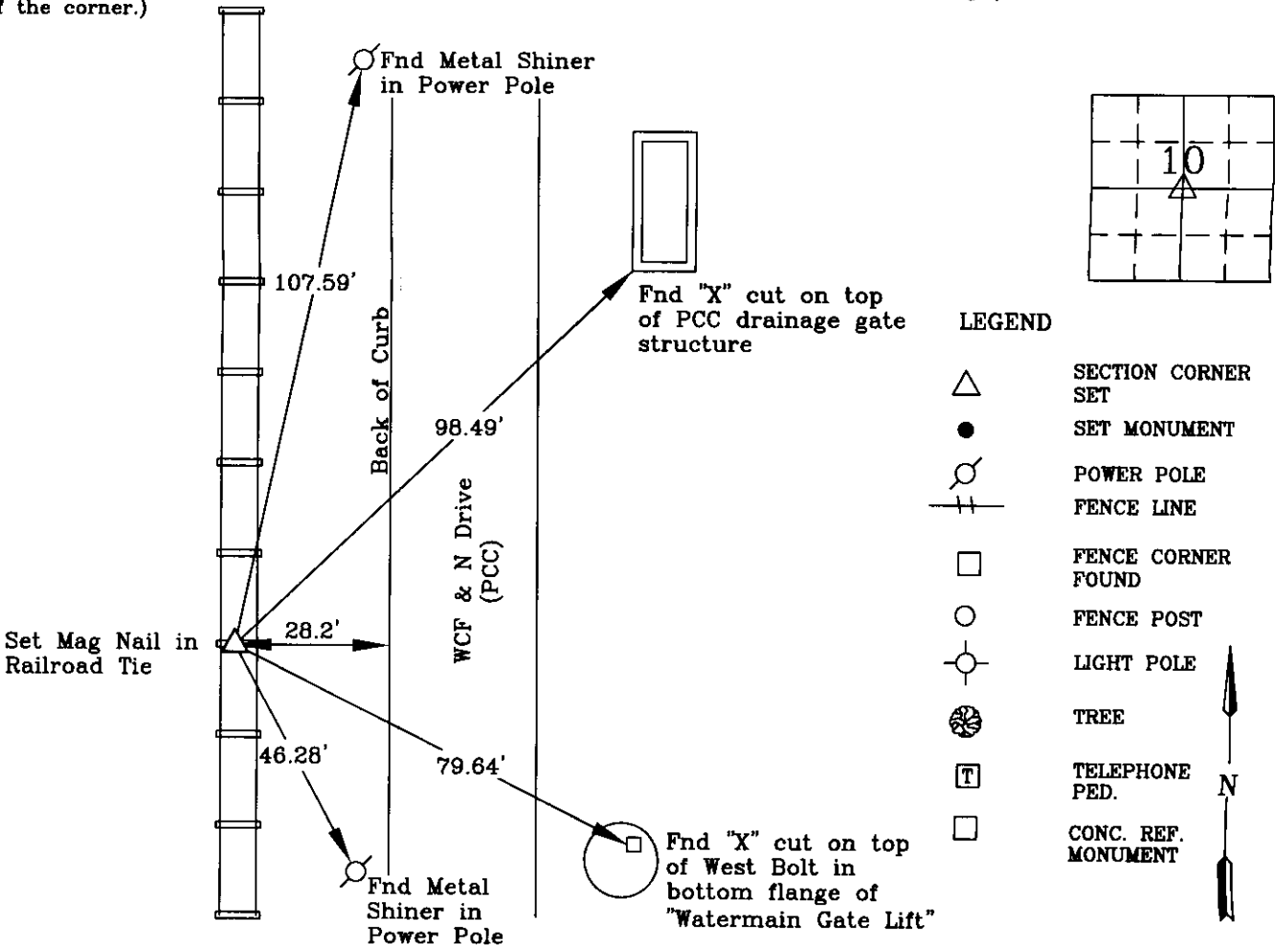
Land Survey Monuments situated in Section 10, Township 89 N, Range 13 W, of the Fifth Principal Meridian, Black Hawk County, Iowa
Previously recorded in Book 2004, Page 29636.

Show reason for preparing this certificate, the evidence and detailed procedures used in establishing the corner positions and monumentation found or placed.)

Monument Description and Remarks: Center of Section 10-89N-13W
Cor. Cert. Doc. #2004 29636 calls for a Found 40d nail in a railroad tie.
Searched area visually and with a metal detector and did not find 40d Nail. The railroad tie had been replaced. Set MAG Nail in new railroad tie per remaining ties. This corner was used for a survey in the NW 1/4 of 10-89N-13W. This corner certificate is being prepared due to a change in monumentation.

PLAN - VIEW

(Show a minimum of three reference ties to durable physical objects, relevant monuments and physical conditions recovery of the corner.)



I hereby certify that this land surveying document was prepared and the related survey work was performed by me or under my direct personal supervision and that I am a duly licensed Land Surveyor under the laws of the State of Iowa.



Wendell J. Lupkes 1-8-2014
WENDELL J. LUPKES, L.S. DATE
License number 12088
My license renewal date is December 31, 2014
Pages or sheets covered by this seal: 1

List Corner to be Indexed

Corner	Section	Twp	Range
Center	10	89 N	13 W



VJ Engineering
1501 Technology Parkway
Cedar Falls, Iowa - 319-266-5829

SECTION CORNER
REFERENCE TIES

File Number: 2014-00013794

scale
NONE
drawn by
MAK
date
1/7/14

7.00✓