



Doc ID: 007621750001 Type: GEN
Recorded: 05/09/2017 at 10:51:44 AM
Fee Amt: \$7.00 Page 1 of 1
Black Hawk County Iowa
SANDIE L. SMITH RECORDER

File 2017-00019482

Kyle J. Helland, 1107 Technology Parkway, Cedar Falls, Iowa 50613-6951, (319)-266-0161

UNITED STATES PUBLIC LAND SURVEY CORNER CERTIFICATE OF

LAND SURVEY MONUMENTS SITUATED IN SECTION NO. 9, TOWNSHIP NO. 89 NORTH, RANGE
NO. 13 WEST OF THE FIFTH PRINCIPAL MERIDIAN, BLACK HAWK COUNTY, IOWA.
PREVIOUSLY RECORDED IN 332 MISC. 111

(SHOW REASON FOR PREPARING THIS CERTIFICATE, THE EVIDENCE AND DETAILED PROCEDURES USED IN ESTABLISHING THE
CORNER POSITIONS AND MONUMENTATION FOUND OR PLACED.)

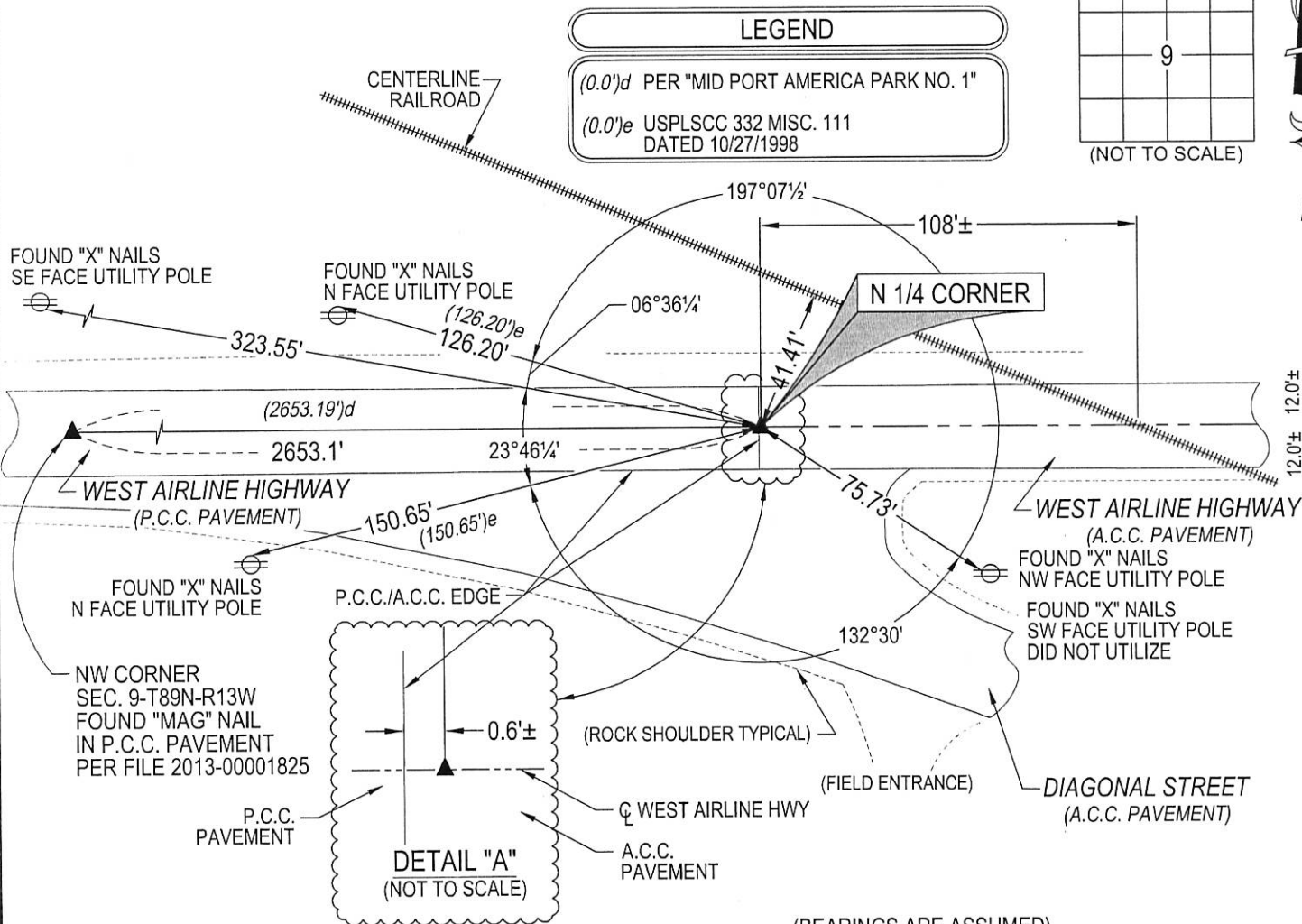
MONUMENT DESCRIPTION AND REMARKS:

NO MONUMENT FOUND, ONLY TWO REFERENCE TIES REMAIN SURVEY COMPLETED IN THE SE 1/4 OF SEC.
4-T89N-R13W.

→ **N 1/4 CORNER:** USPLSCC 332 MISC. 111 DATED 10/27/1998 CALLS FOR [FOUND 1/2"Ø REBAR IN P.C. CONC.
PAV'T (CITY OF WATERLOO 1998 PROJECT). WALLACE AND HOLLAND TIES OF 1979 SHOW FINDING A NAIL IN
ASPHALT AND RESET P.K. NAIL. 1996 CES FOUND NAIL 3" DEEP IN ASPHALT & RESET 1/2" REBAR OVER POINT
IN ASPHALT OVERLAY. CITY RESET REBAR AFTER 1998 PAVING PROJECT. N 1/4 COR. SEC. 9-89-13.] SET
"MAG" NAIL OVER MAGNETIC DETECTION IN A.C.C. PAVEMENT AT A POINT CORRESPONDING TO TWO
REMAINING REFERENCE TIES.

PLAN VIEW

(SHOW A MINIMUM OF THREE REFERENCE TIES TO DURABLE PHYSICAL OBJECTS, RELEVANT MONUMENTS AND PHYSICAL
CONDITIONS THAT WILL ENABLE RECOVERY OF THE CORNER.)



(BEARINGS ARE ASSUMED)



HELLAND ENGINEERING & SURVEYING, LTD.
1107 Technology Parkway
Cedar Falls, Iowa 50613-6951
(319)-266-0161

SHINER = 8d. NAIL & 1 5/16"Ø METAL SHINER DRAWN BY: SMN
BRASS TAG = 8d. NAIL & 13/16"Ø BRASS TAG
OPC = PLASTIC CAP (O=ORANGE, R=RED, Y=YELLOW)
(00') RECORDED AS FILE NAME: 17-112-424.DWG



I hereby certify that this land surveying document was prepared
and the related survey work was performed by me or under my
direct personal supervision and that I am a duly licensed
Professional Land Surveyor under the laws of the State of Iowa.
Kyle J. Helland 4/11/17
Kyle J. Helland
License Number 23212
My license renewal date is December 31, 2017.
All pages or sheets are covered by this seal except:

LIST CORNERS TO BE INDEXED			
CORNER	SECTION	TOWNSHIP	RANGE
N 1/4 CORNER	9	89N	13W
S 1/4 CORNER	4	89N	13W