

INDEX ☒
 MARGIN
 PROOF
 COMPARE

BLACK HAWK COUNTY IOWA:SS

Filed for record Oct 29, 19 98 at

4:00 P.M. and recorded in Book

of _____ Page _____

Christina S. Less Recorder

FEE 1-5.00/

WAYNE CLAASSEN ENGINEERING

10067

WAYNE CLAASSEN ENGINEERING AND SURVEYING, INC.
P.O. BOX 898 WATERLOO, IOWA 50704-0898

PHONE: (VOICE) 319-235-6294
(FAX) 319-235-0028

UNITED STATES PUBLIC LAND SURVEY CORNER CERTIFICATE

Land Survey Monuments situated in Section 9, Township 89N, Range 13W, of the Fifth Principal Meridian, BLACK HAWK County, Iowa.

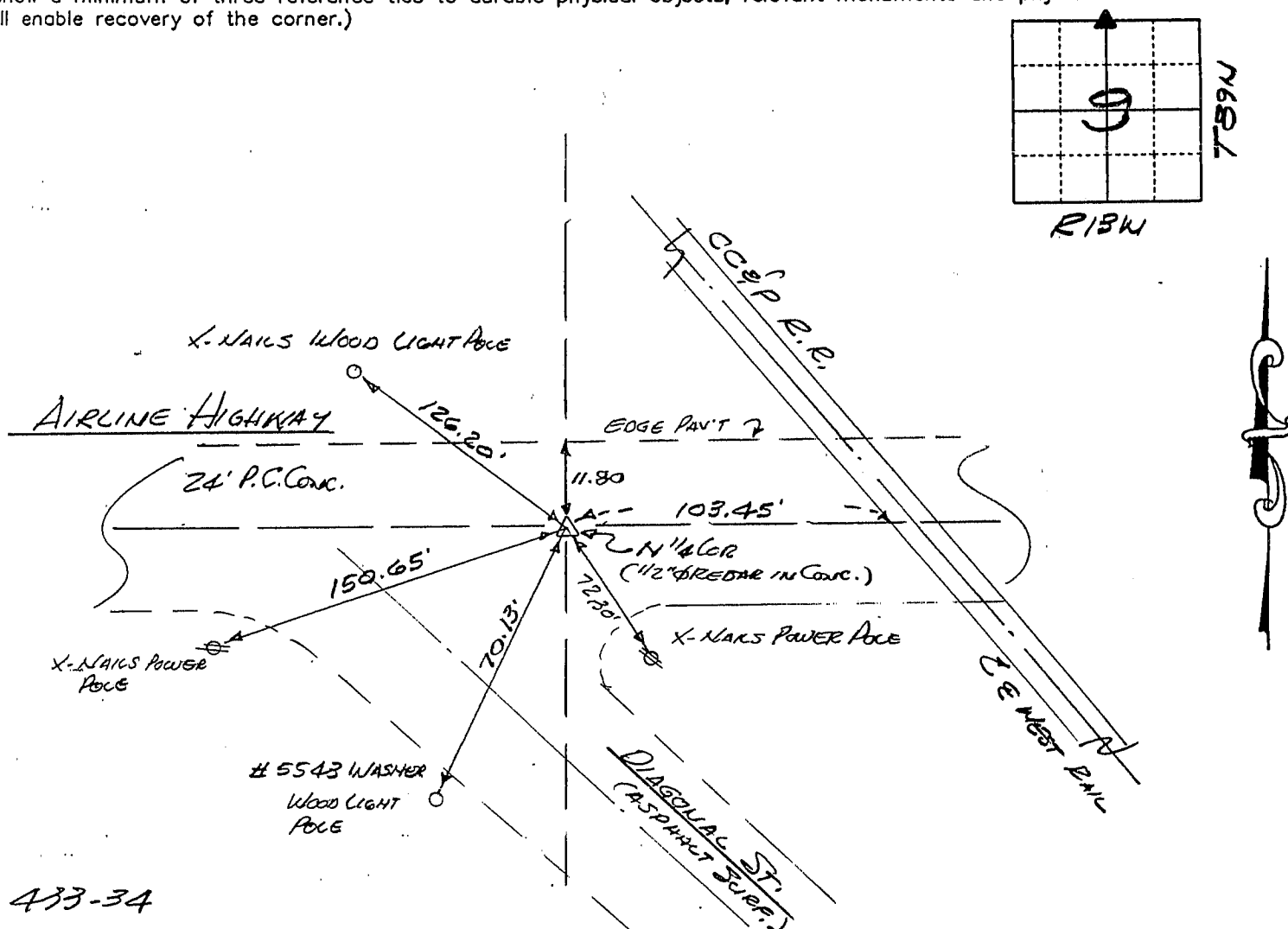
Previously recorded in N/A in County Recorder's Office.
(book, page, document number, etc.)

(Show reason for preparing this certificate, the evidence and detailed procedures used in establishing the corner positions and monumentation found or placed.)

Monument Description and Remarks FOUND 1/2" REBAR IN P.C. CONC. PAV'T (City of Waterloo 1998 Project). Wallace & Holland ties of 1979 show finding nail in asphalt & reset P.K. nail. 1996 CES FOUND NAIL 3" deep in asphalt & reset 1/2" rebar over point in asphalt overlay. City reset rebar after 1998 paving project. N 1/4 Sec. 9-89-13

PLAN - VIEW

(Show a minimum of three reference ties to durable physical objects, relevant monuments and physical conditions that will enable recovery of the corner.)



I hereby certify that the survey work was completed and this certificate was prepared by me or under my direct personal supervision and that I am a duly licensed land surveyor under the laws of the state of Iowa.

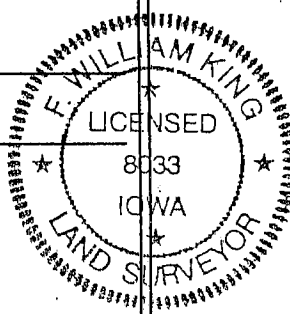
Signature: F. William King

(Name typed or printed:) F. WILLIAM KING

Date: 10-27-1998

Lic. No. 8033

SEAL



List Corners to be Indexed

Corners	Section	Twp	Range
N 1/4	9	89N	13W

BOOK 332 PAGE 111