

SC
MISC
**INDEX VS
MARGIN
PROOF or
COMPARE**

BLACK HAWK COUNTY IOWA:SS
FILED FOR RECORD Sep 26, 2001 at
4:00 P.M. AND RECORDED IN BOOK 344
OF MISC AT PAGE 129

008021

Paul H. Helland RECORDER
FEE 1-5.00/

PAUL HELLAND

Paul H. Helland, 1107 Technology Parkway, Cedar Falls, Iowa 50613-6951, (319)-266-0161

UNITED STATES PUBLIC LAND SURVEY CORNER CERTIFICATE OF

LAND SURVEY MONUMENTS SITUATED IN SECTION NO. 8, TOWNSHIP NO. 89 NORTH, RANGE
NO. 13 WEST OF THE FIFTH PRINCIPAL MERIDIAN, BLACK HAWK COUNTY, IOWA.
PREVIOUSLY RECORDED IN BOOK 298, PAGE 550.

(SHOW REASON FOR PREPARING THIS CERTIFICATE, THE EVIDENCE AND DETAILED PROCEDURES USED IN ESTABLISHING THE
CORNER POSITIONS AND MONUMENTATION FOUND OR PLACED.)

MONUMENT DESCRIPTION AND REMARKS:

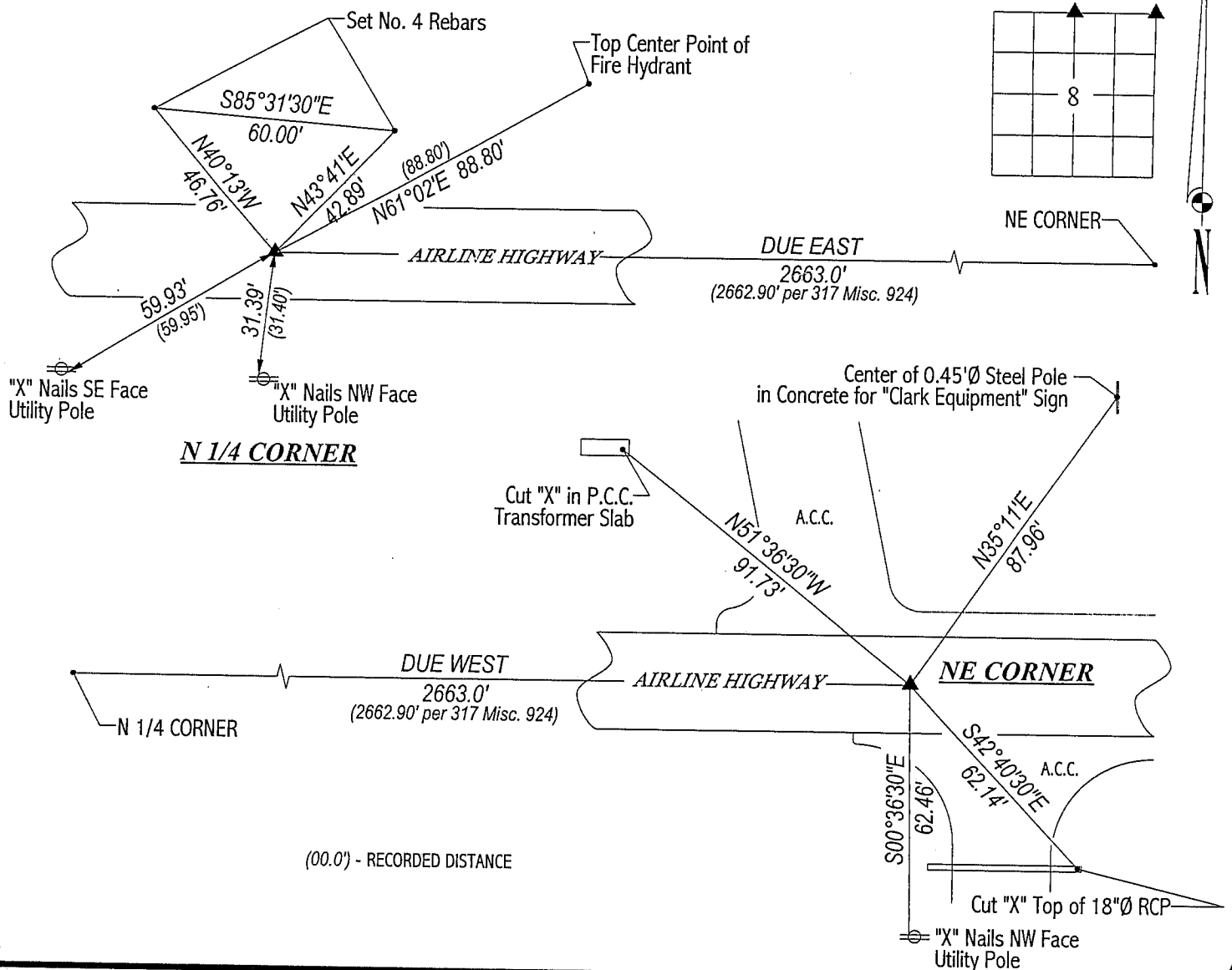
SURVEY DONE IN NE 1/4 NE 1/4 OF SEC. 8-T89N-R13W.

N 1/4 CORNER: 298 Misc. 550 calls for a found cone head nail in A.C.C. pavement. New P.C.C. pavement recently placed.
Found No. 4 rebar in P.C.C. centerline joint fitting ties per 298 Misc. 550.

NE CORNER: New P.C.C. pavement recently placed. Found No. 4 rebar in P.C.C.

PLAN VIEW

(SHOW A MINIMUM OF THREE REFERENCE TIES TO DURABLE PHYSICAL OBJECTS, RELEVANT MONUMENTS AND PHYSICAL
CONDITIONS THAT WILL ENABLE RECOVERY OF THE CORNER.)



HELLAND ENGINEERING & SURVEYING, LTD.
1107 Technology Parkway
Cedar Falls, Iowa 50613-6951
(319)-266-0161

FILE NAME: 01-262CC.DRG



I hereby certify that this land surveying document was prepared
and the related survey work was performed by me or under my
direct personal supervision and that I am a duly licensed Land
Surveyor under the laws of the State of Iowa.

Paul H. Helland
Paul H. Helland
License Number 6505
My license renewal date is December 31, 2001.
All pages or sheets are covered by this seal except:

LIST CORNERS TO BE INDEXED

CORNER	SECTION	TOWNSHIP	RANGE
N 1/4 CORNER	8	89N	13W
NE CORNER	8	89N	13W

Rac