

Jeffrey P. Helland, 1107 Technology Parkway, Cedar Falls, Iowa 50613-6951, (319)-266-0161

# UNITED STATES PUBLIC LAND SURVEY CORNER CERTIFICATE OF

LAND SURVEY MONUMENTS SITUATED IN SECTION NO. 7, TOWNSHIP NO. 89 NORTH, RANGE  
NO. 13 WEST OF THE FIFTH PRINCIPAL MERIDIAN, BLACK HAWK COUNTY, IOWA.

PREVIOUSLY RECORDED IN MISC. N/A BK. 298 p. 548 (S.T.)

(SHOW REASON FOR PREPARING THIS CERTIFICATE, THE EVIDENCE AND DETAILED PROCEDURES USED IN ESTABLISHING THE CORNER POSITIONS AND MONUMENTATION FOUND OR PLACED.)

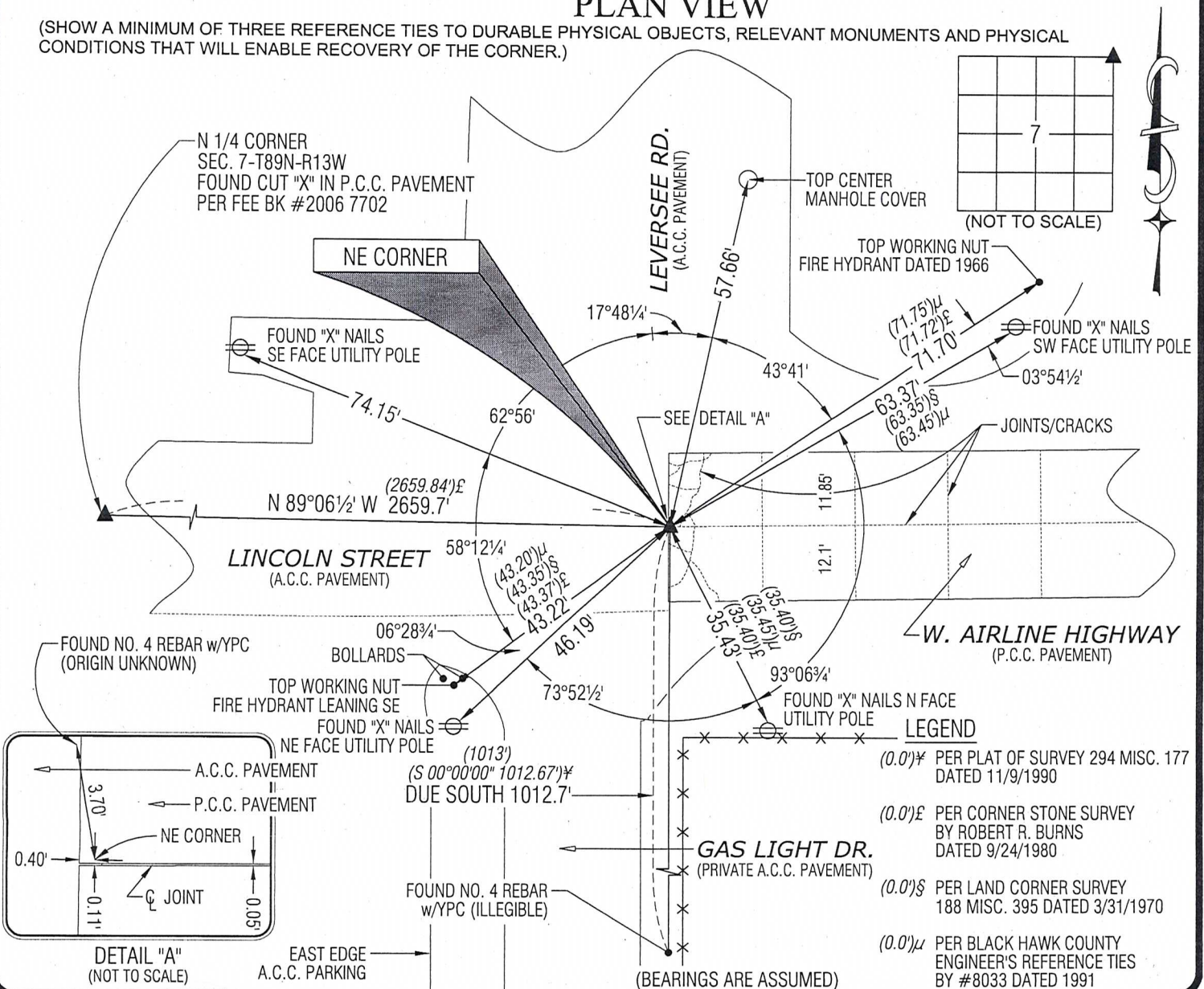
MONUMENT DESCRIPTION AND REMARKS:

NO USPLSCC ON FILE. SURVEY COMPLETED IN THE NE 1/4 OF SEC. 7-T89N-R13W.

→ **NE CORNER:** BLACK HAWK COUNTY ENGINEER'S REFERENCE TIES CALLS FOR [S.C.M.]. BLACK HAWK COUNTY LAND CORNER SURVEY BK 188 PG 395 DATED 3/31/1970 CALLS FOR [FOUND 1/2"  $\square$  IRON PIN SET VALVE ABOVE]. CORNER STONE SURVEY BY ROBERT R. BURNS DATED 9/24/1980 CALLS FOR [FOUND VALVE IN AC]. PLAT OF SURVEY 294 MISC. 177 DATED 11/9/1990 CALLS FOR [FOUND IRON PIN]. SET CUT "X" IN P.C.C. PAVEMENT PER BEST FIT INTERSECTION OF REMAINING TIES. CORNER IS 0.4' EAST OF A.C.C./P.C.C. SPLIT AND 0.11'± NORTH OF CENTERLINE JOINT.

## PLAN VIEW

(SHOW A MINIMUM OF THREE REFERENCE TIES TO DURABLE PHYSICAL OBJECTS, RELEVANT MONUMENTS AND PHYSICAL CONDITIONS THAT WILL ENABLE RECOVERY OF THE CORNER.)



**HES** HELLAND ENGINEERING & SURVEYING, LTD.  
1107 Technology Parkway  
Cedar Falls, Iowa 50613-6951  
(319)-266-0161

SHINER = 8D NAIL & 1 5/16"Ø METAL SHINER  
BRASS TAG = 13/16"Ø BRASS TAG  
OPC = PLASTIC CAP (O=ORANGE, R=RED, Y=YELLOW)  
(00') RECORDED AS FILE NAME: 09-125C1.DWG



I hereby certify that this land surveying document was prepared and the related survey work was performed by me or under my direct personal supervision and that I am a duly licensed Land Surveyor under the laws of the State of Iowa.

*Jeffrey P. Helland* 3/18/09  
Jeffrey P. Helland  
License Number 16264  
My license renewal date is December 31, 2009.  
All pages or sheets are covered by this seal except:

### LIST CORNERS TO BE INDEXED

CORNER	SECTION	TOWNSHIP	RANGE
NE CORNER	7	89N	13W
SE CORNER	6	89N	13W
SW CORNER	5	89N	13W
NW CORNER	8	89N	13W



# UNITED STATES PUBLIC LAND SURVEY CORNER CERTIFICATE

## OF

SLSI 9-90

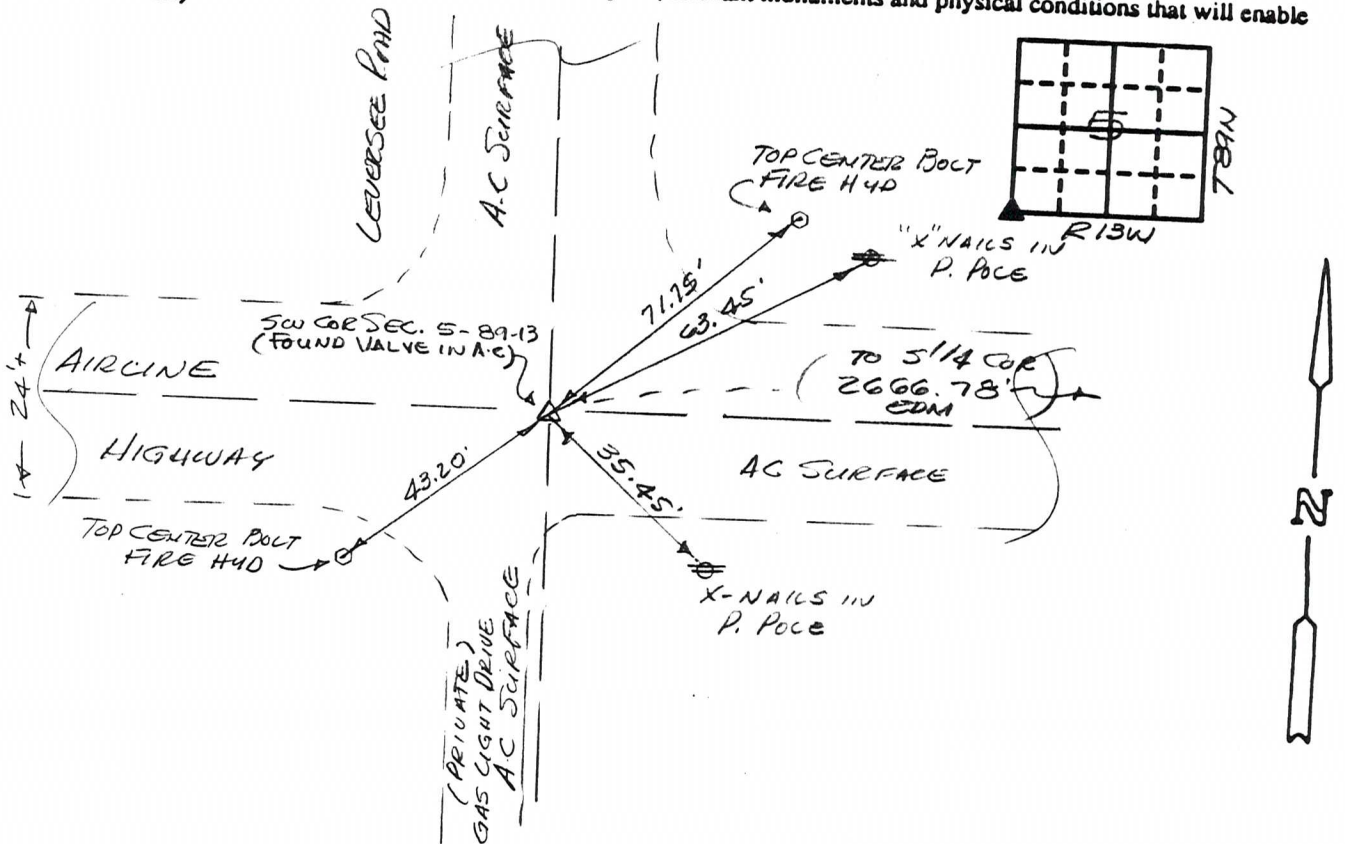
Land Survey Monuments situated in Section 5, Township 89N, Range 13W, of the Fifth Principal Meridian, BLAKE HAWK County, Iowa.  
Previously recorded in N/A in County Recorder's Office.

(Show reason for preparing this certificate, the evidence and detailed procedures used in establishing the corner positions and monumentation found or placed.)

Monument Description and Remarks: FOUND 2"  $\phi$  VALVE IN ASPHALT SURFACE  
PER I.D.O.T. TIES.

### PLAN - VIEW

(Show a minimum of three reference ties to durable physical objects, relevant monuments and physical conditions that will enable recovery of the corner.)



I hereby certify that the survey work was completed and this certificate was prepared by me or under my direct personal supervision and that I am a duly registered land surveyor under the laws of the state of Iowa.

Signature: F. William King  
Name typed or printed: F. WILLIAM KING

Date: 10-29-1991 Reg. No. 8033



Corners	List Corners to be Indexed	Section	Twp	Range
SW	5	89N	13W	

MISC. BK. 298 P. 548