

Michael R. Fagle, P.L.S. AECOM, 501 Sycamore St., Suite 222, Waterloo, Iowa 50703 I-319-232-6531

UNITED STATES PUBLIC LAND SURVEY CORNER CERTIFICATE  
OF

Land Survey Monuments situated in Section 6, Township 89 North,  
Range 13 West, of the Fifth Principal Meridian, BLACK HAWK  
County, Iowa. Previously recorded in DOCUMENT NO. 2006 4463  
in County Recorder's Office. (Book, Page, Document Number, etc.)

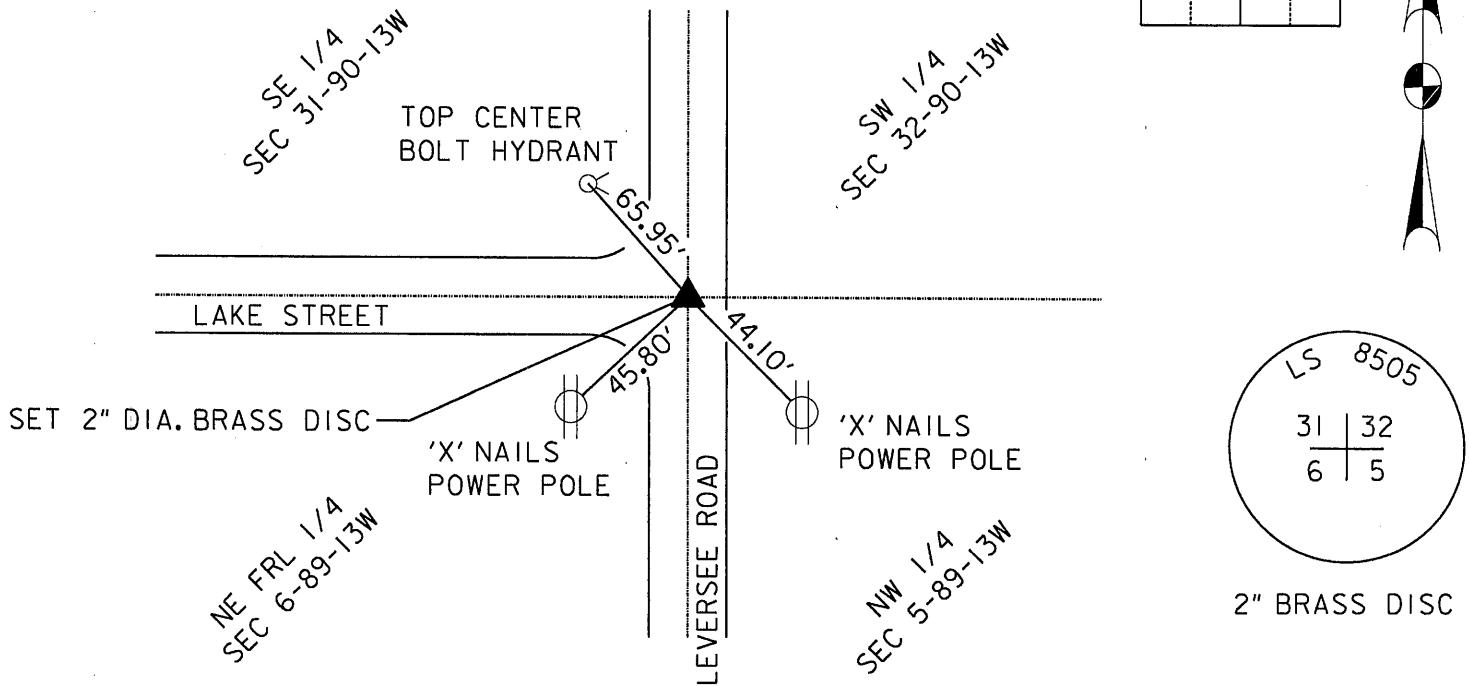
(Show reason for preparing this certificate, the evidence and detailed procedures used in establishing the corner positions and monumentation found or placed.)

Monument Description and Remarks:  
FOUND 3/8" DIA. PIN 6" BELOWW SURFACE OF ROAD. PIN WAS DESTROYED DURING THE RECONSTRUCTION OF LEVERSEE ROAD, CITY RC-000-3013.  
SET A 2" DIA. BRASS DISC STAMPED WITH SECTION CORNER NUMBERS AND LS 8508 IN NEW CONCRETE ROAD.

PLAN - VIEW

(Show a minimum of three reference ties to durable physical objects, relevant monuments and physical conditions that will enable recovery of the corner.)

ALSO THE,  
SOUTHEAST CORNER SEC. 31-90-13W  
SOUTHWEST CORNER SEC. 32-90-13W  
NORTHWEST CORNER SEC. 5-89-13W



ALL DEMENSION ARE MEASURED DIRECT

I hereby certify that this Land Surveying document was prepared by me or under my direct personal supervision and that I am a duly Licensed Land Surveyor under the laws of the State of Iowa.

*Michael R. Fagle* 12-03-2013  
MICHAEL R. FAGLE Date

License number 8505  
My license renewal date is December 31, 2014  
Pages or sheets covered by this seal:  
THIS SHEET

List Corners to be Indexed			
Corners	Section	Twp	Range
NORTHEAST	6	T 89 N	R 13 W
ALSO THE,			
SOUTHEAST	31	T 90 N	R 13 W
SOUTHWEST	32	T 90 N	R 13 W
NORTHWEST	5	T 89 N	R 13 W