

# UNITED STATES PUBLIC LAND SURVEY CORNER CERTIFICATE

SLSI 9-90

OF

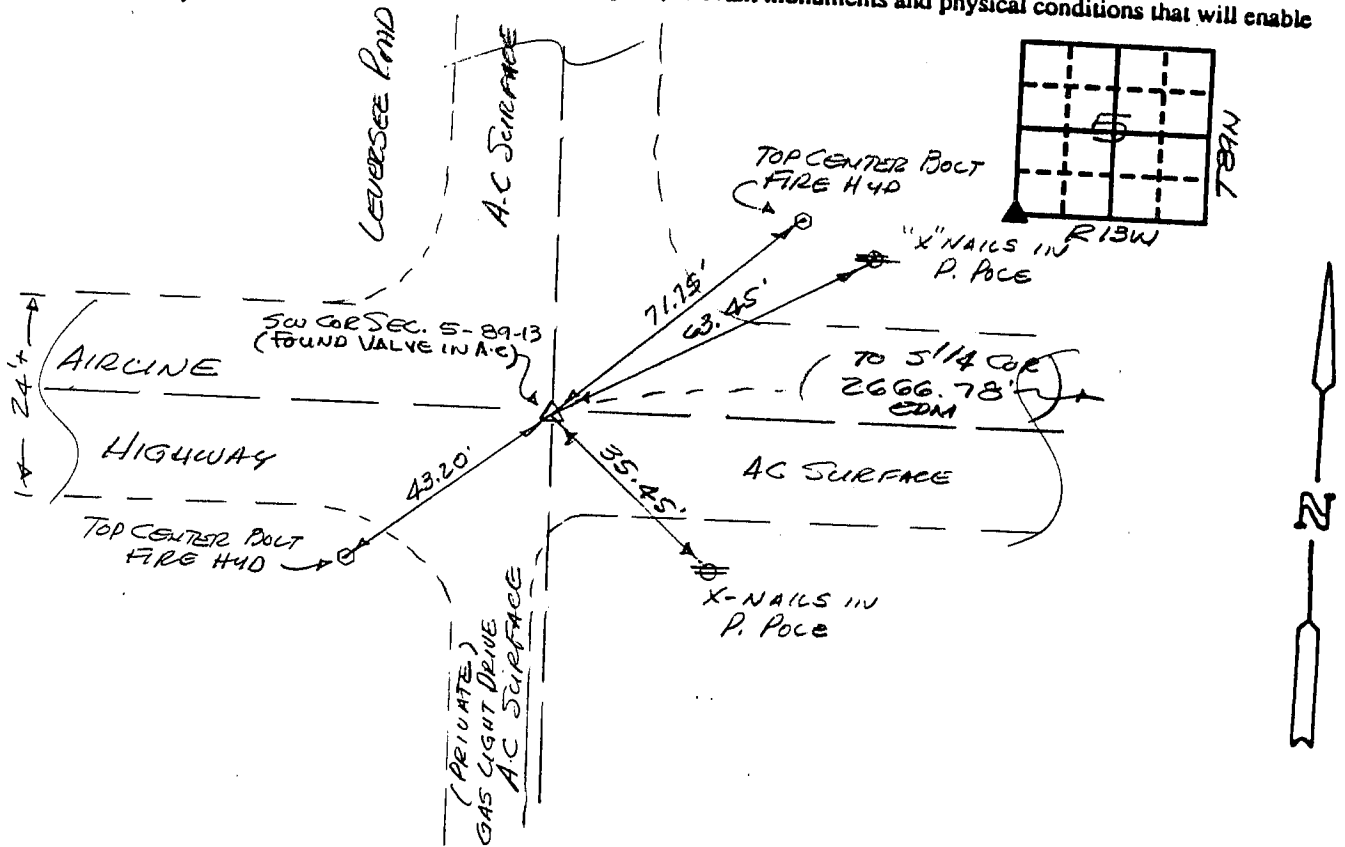
Land Survey Monuments situated in Section 5, Township 89N, Range 13W, of the Fifth Principal Meridian, BLAKE HAWK County, Iowa.  
Previously recorded in N/A (book, page, document number, etc.) in County Recorder's Office.

(Show reason for preparing this certificate, the evidence and detailed procedures used in establishing the corner positions and monument found or placed.)

Monument Description and Remarks: FOUND 2" Ø VALVE IN ASPHALT SURFACE  
PER I.D.O.T. TIES.

## PLAN - VIEW

(Show a minimum of three reference ties to durable physical objects, relevant monuments and physical conditions that will enable recovery of the corner.)



I hereby certify that the survey work was completed and this certificate was prepared by me or under my direct personal supervision and that I am a duly registered land surveyor under the laws of the state of Iowa.

Signature: F. William King  
Name typed or printed: F. WILLIAM KING  
Date: 10-29-1991 Reg. No. 8033

Corners	List Corners to be Indexed	Section	Twp	Range
SW	5	89N	13W	

SEAL



MISC. BK. 298 p. 548