

Reserved for County Recorder's use

2024-18181

RECORDED: 08/02/2024 11:07:43 AM

RECORDING FEE: \$7.00

REVENUE TAX: \$

COMBINED FEE: \$7.00

SANDIE L. SMITH, RECORDER

BLACK HAWK COUNTY, IOWA

\* Kyle J. Helland, 6109 Chancellor Drive, Cedar Falls, Iowa 50613-6916, (319)-266-0161

# UNITED STATES PUBLIC LAND SURVEY CORNER CERTIFICATE OF

LAND SURVEY MONUMENTS SITUATED IN SECTION NO 4, TOWNSHIP NO 89 NORTH, RANGE  
NO 13 WEST OF THE FIFTH PRINCIPAL MERIDIAN, BLACK HAWK COUNTY, IOWA  
PREVIOUSLY RECORDED IN 314 MISC 89

(SHOW REASON FOR PREPARING THIS CERTIFICATE, THE EVIDENCE AND DETAILED PROCEDURES USED IN ESTABLISHING THE  
CORNER POSITIONS AND MONUMENTATION FOUND OR PLACED )

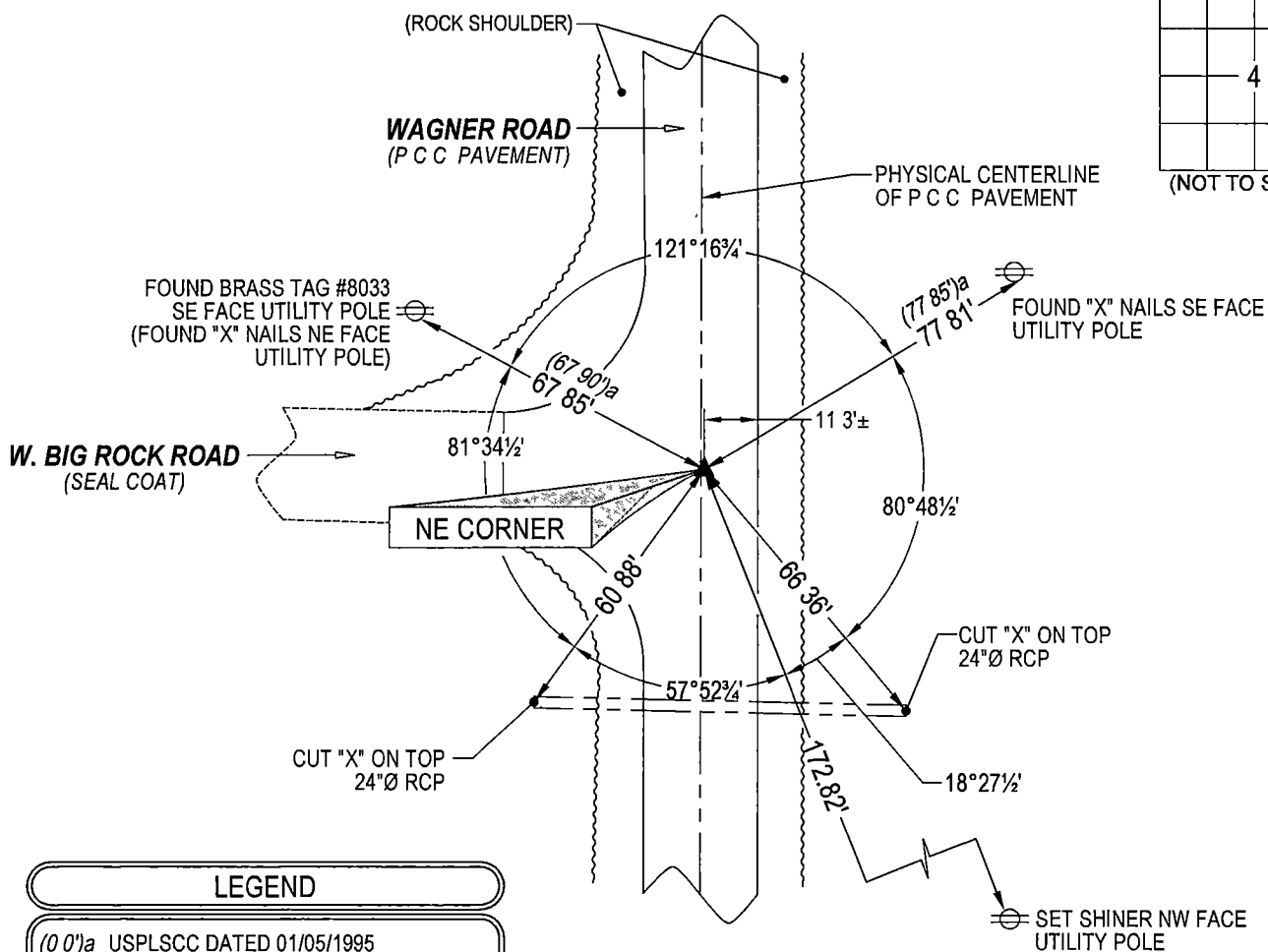
## MONUMENT DESCRIPTION AND REMARKS

ONLY TWO REFERENCE TIES REMAIN SURVEY COMPLETED IN THE NE FRL 1/4 OF SEC. 4-T89N-R13W

→ **NE CORNER:** PER SURVEY BY JOHN BALL (UNDATED) CALLS FOR [STONE] USPLSCC 314 MISC 89 DATED 01/05/1995  
CALLS FOR [FOUND ALUM MON IN CONC PAVING SET BY CES AFTER WAGNER ROAD PAVING PROJECT 1985 ≠ CES  
HAD FOUND ¾"Ø REBAR AT THIS CORNER IN 1982] SEARCHED AREA WITH MAGNETIC DETECTOR AND FOUND 3"Ø  
ALUMINUM DISC IN P.C.C. PAVEMENT 0.6'± EAST OF CENTERLINE UTILIZED SAID 3"Ø ALUMINUM DISC IN P.C.C.  
PAVEMENT AS CORRECT CORNER

## PLAN VIEW

(SHOW A MINIMUM OF THREE REFERENCE TIES TO DURABLE PHYSICAL OBJECTS, RELEVANT MONUMENTS AND PHYSICAL  
CONDITIONS THAT WILL ENABLE RECOVERY OF THE CORNER )

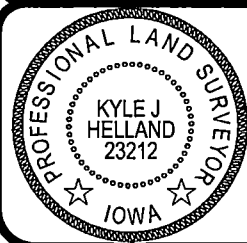


(BEARINGS ARE ASSUMED)



HELLAND ENGINEERING & SURVEYING, LTD  
6109 Chancellor Drive  
Cedar Falls, Iowa 50613-6916  
(319)-266-0161

BRASS TAG = 4d NAIL & 13/16"Ø BRASS TAG DRAWN BY CDR  
SHINER = 1"Ø STEEL SHINER w/MASONRY NAIL  
OPC = PLASTIC CAP (O=ORANGE, R=RED, Y=YELLOW)  
(00') RECORDED AS FILE NAME 24-185-21 DWG



I hereby certify that this land surveying document was prepared  
and the related survey work was performed by me or under my  
direct personal supervision and that I am a duly licensed  
Professional Land Surveyor under the laws of the State of Iowa.  
*Kyle J. Helland*  
Kyle J. Helland  
License Number 23212  
My license renewal date is December 31, 2025  
All pages or sheets are covered by this seal except

## LIST CORNERS TO BE INDEXED

CORNER	SECTION / TOWNSHIP / RANGE		
NE CORNER	4	89N	13W
SE CORNER	33	90N	13W
SW CORNER	34	90N	13W
NW CORNER	3	89N	13W