

ENTER
1-31-90
BKS. I & 2

SLSI 9-90

UNITED STATES PUBLIC LAND SURVEY CORNER CERTIFICATE

OF

Land Survey Monuments situated in Section 33, Township 35N, Range 13W, of the Fifth Principal Meridian, BLACK HAWK County, Iowa.
Previously recorded in N/A in County Recorder's Office.

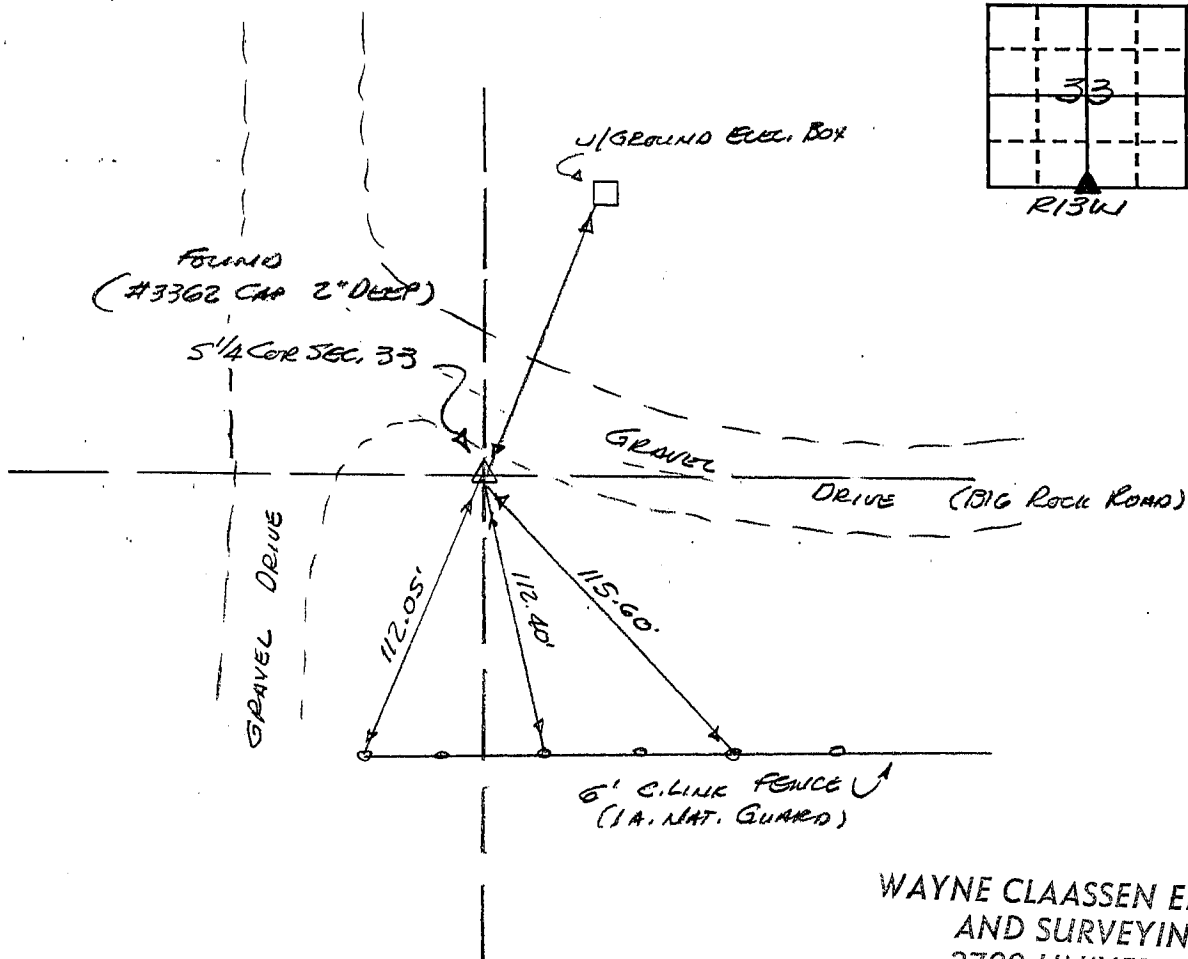
(book, page, document number, etc.)

(Show reason for preparing this certificate, the evidence and detailed procedures used in establishing the corner positions and monumentation found or placed.)

Monument Description and Remarks: FOUND 1/2" REBAR & CAP NO. 3362 USING CES TIES
OF 1982 WHEN STD CONC. MON. WAS FOUND @ 2.3' DEEP. IN 1982, A CLIP PIPE
WAS SET ON THE NORTH SIDE OF THE MONUMENT & THE CAPPED PIN WAS SET
OVER THE MONUMENT.

PLAN - VIEW

(Show a minimum of three reference ties to durable physical objects, relevant monuments and physical conditions that will enable recovery of the corner.)



WAYNE CLAASSEN ENGINEERING
AND SURVEYING, INC.
2709 UNIVERSITY AVE.
P.O. BOX 898
WATERLOO, IA 50704

385-43
241-62

I hereby certify that the survey work was completed and this certificate was prepared by me or under my direct personal supervision and that I am a duly registered land surveyor under the laws of the state of Iowa.

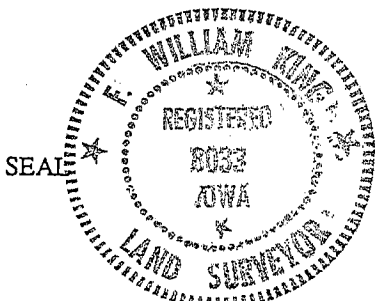
Signature:

Name typed or printed: F. WILLIAM KING

Date: 1-5-1995 Reg. No. 8033

List Corners to be Indexed

Corners	Section	Twp	Range
<u>S 1/4</u>	<u>33</u>	<u>35N</u>	<u>13W</u>
<u>4</u>	<u>4</u>	<u>35N</u>	<u>13W</u>



MISC. BK 314 p. 91