

Kirk D. Eschliman, P.L.S. Iowa Lic. No. 9961, 819 Sycamore Street, Waterloo, Iowa 50703-4729 - Phone: 319-234-0509

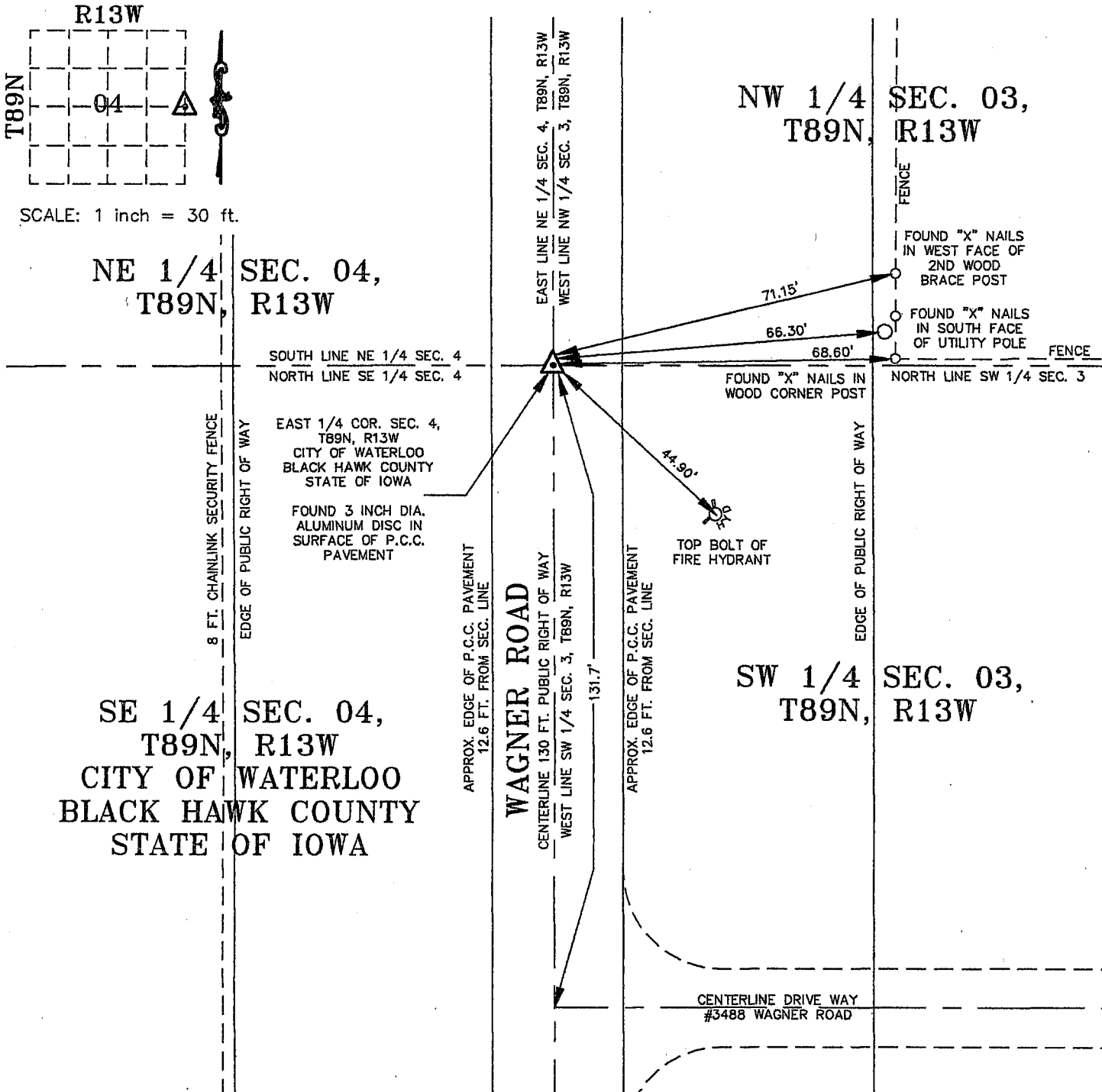
UNITED STATES PUBLIC LAND SURVEY CORNER CERTIFICATE OF

LAND SURVEY MONUMENTS SITUATED IN SECTION 04, TOWNSHIP 89 NORTH, RANGE 13 WEST, OF THE FIFTH PRINCIPAL MERIDIAN, BLACK HAWK COUNTY, IOWA. PREVIOUSLY RECORDED IN MISC. BOOK 328, PAGE 385.

(SHOW REASON FOR PREPARING THIS CERTIFICATE, THE EVIDENCE AND DETAILED PROCEDURES USED IN ESTABLISHING THE CORNER POSITIONS AND MONUMENTATION FOUND OR PLACED.)

MONUMENT DESCRIPTION AND REMARKS:

FOUND 3 INCH DIA. ALUMINUM DISC IN P.C.C. PAVEMENT SURFACE OF WAGNER ROAD. DUE TO CHANGES IN FENCE LINES, PREVIOUS MONUMENT TIES NO LONGER REFLECT CURRENT CONDITIONS. MONUMENT RETIED AND USED FOR A SURVEY IN THE SOUTHWEST QUARTER OF SECTION 03.



I HEREBY CERTIFY THAT THIS LAND SURVEYING DOCUMENT WAS PREPARED AND THE RELATED SURVEY WORK WAS PERFORMED BY ME OR UNDER MY DIRECT PERSONAL SUPERVISION AND THAT I AM A DULY LICENSED LAND SURVEYOR UNDER THE LAWS OF THE STATE OF IOWA.

Kirk D. Eschliman DATE: 02/26/2008
KIRK D. ESCHLIMAN, P.L.S. IOWA LIC. NO. 9961
MY LICENSE RENEWAL DATE IS DECEMBER 31, 2009
PAGES OR SHEETS COVERED BY THIS SIGNATURE & SEAL: SHEET 1 OF 1



LIST OF CORNERS TO BE INDEXED:

CORNER	SEC.	TWP.	RANGE
EAST 1/4	04	89N	13W