

Wayne Claassen Engineering and Surveying Inc. PO Box 898 Waterloo IA 50704

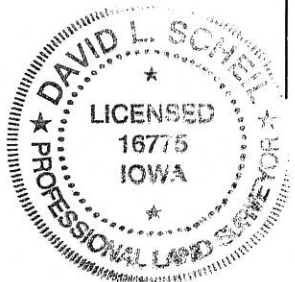
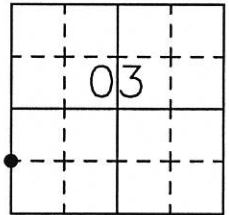
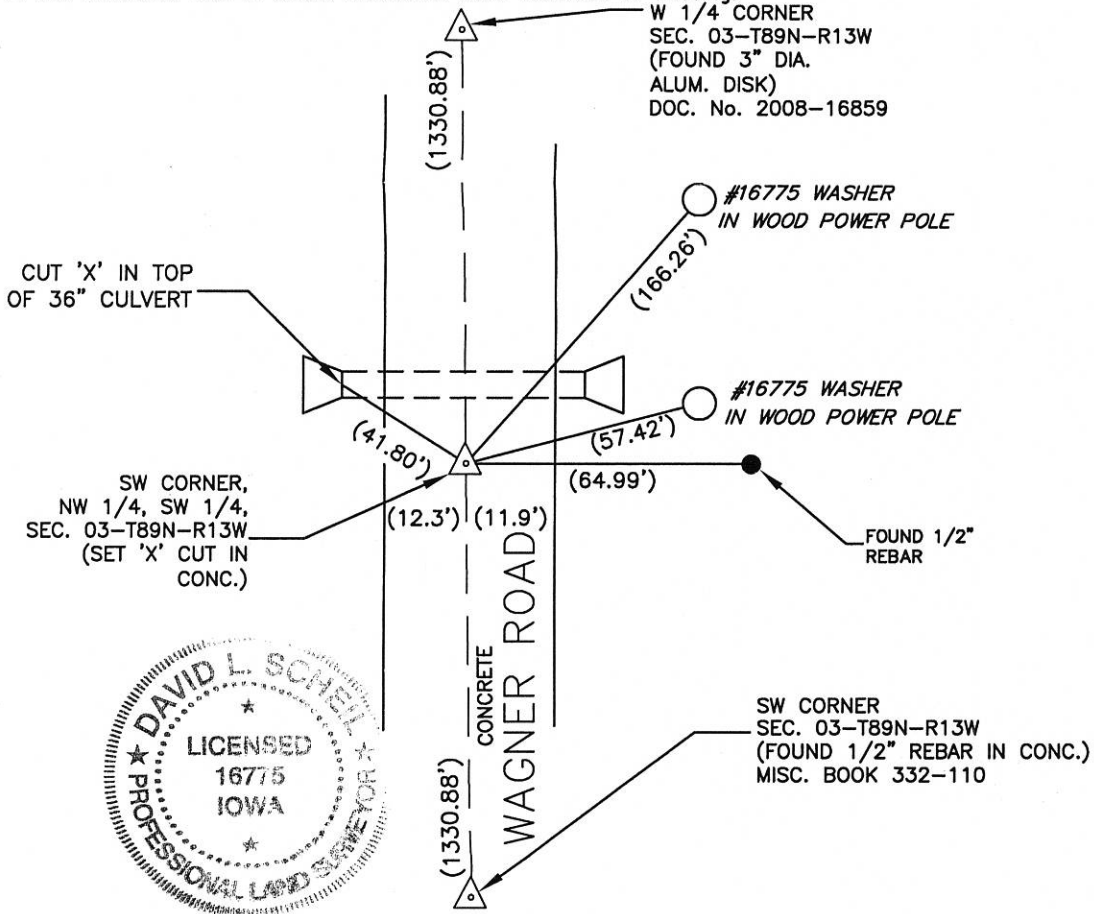
UNITED STATES PUBLIC LAND SURVEY CORNER CERTIFICATE

Land Survey Monuments situated in Section 03, Township 89 North, Range 13 West, of the Fifth Principal Meridian, Black Hawk County, Iowa.  
Previously recorded in (book, page, document number, etc.) in County Recorder's Office.

Monument Description and Remarks  
Set 'x' cut in concrete road at the midpoint between the Southwest corner and the West 1/4 corner.

PLAN - VIEW

- Reason for filing certificate:
- ☒ There is no certificate on file with the Recorder's Office.
  - ☐ Accepts corner position which differs from the one shown in above document.
  - ☐ The corner monument was replaced or modified.
  - ☐ The reference ties in above document were incorrect or missing.



Iowa State Plane Coordinate System  
(North Zone)  
N=3663874.1  
E=5223861.5  
(For reference only)

677-80

I hereby certify that this land surveying document was prepared and the related survey work was performed by me or under my direct personal supervision and that I am a duly Licensed Land Surveyor under the laws of the State of Iowa.

Signature: David L. Scheil  
David L. Scheil, L.S.  
Date: Nov. 20, 2018 Lic. No. 16775  
Pages or Sheets Covered by this Seal: THIS SHEET ONLY.  
My license renewal date is December 31, 2018

SEAL

List Corners to be Indexed

Corners	Section	Twp	Range
SW CORNER, NW 1/4, SW 1/4,	03	89 N	13 W
SE CORNER, NE 1/4, SE 1/4,	04	89 N	13 W