

INDEXED
COMPARED
PAGED

7154

BLACK HAWK COUNTY, IOWA:SS

Filed for record NOV 9 19 90

at 2:25 P M, and recorded in

Misc Book 293

Page 317

Remona Williams

Recorder

Deputy

Fee 5.00

Cedar Valley Engineering Comp
PO Box 827
Waverly, IA 50677

Recorded

LAND SURVEY MONUMENT RECORD BLACK HAWK COUNTY, IA

Description of monument and evidence found at corner location.

REBAR - COUNTY RECORD

REBAR # **3362** - CLAUSEN ENGR. RECORD

REBAR - FOUND W/ # 8033

Sec. 3 , T 89 N , R 13 W

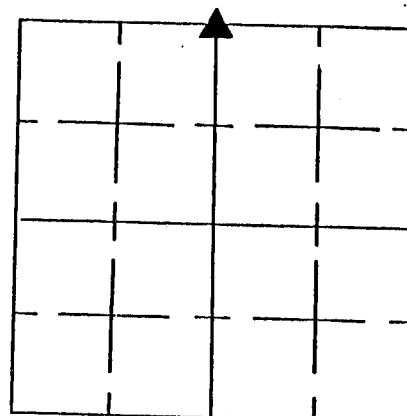
N 1/4 Corner

Location:

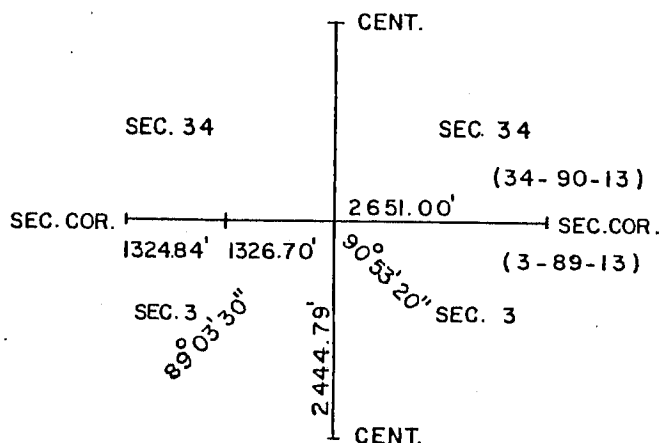
☐ Section Corner

☒ Quarter Corner

☐ Corner of Quarter/Quarter



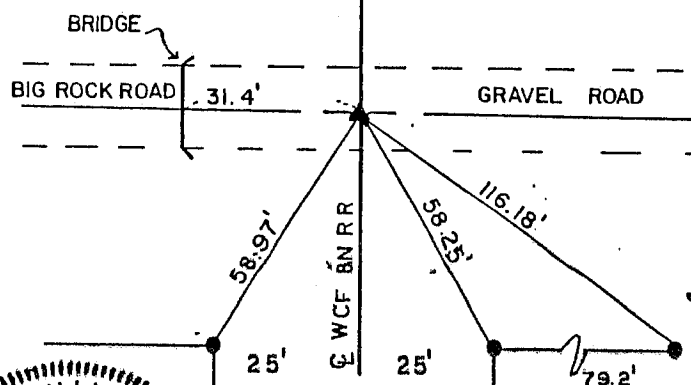
Accessory information found at time of corner location.



Sketch showing relative location of monument and reference points (minimum of three (3) references).

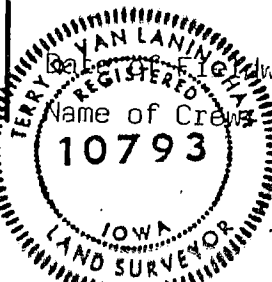
ALL TIE TO REBAR

W/ CAP # 8033



I hereby certify that this plat, map, survey, or report was made by or under my direct personal supervision and that I am a duly registered Land Surveyor under the laws of the State of Iowa.

Signed *Terry D. Van Laningham* Date *Oct. 5 19 90*
Terry D. Van Laningham, L.S. Iowa Reg. No. 10793



Name of Crew: SEPTEMBER, 18, 1990

A. AKSOY

T. VAN LANINGHAM

CEDAR VALLEY ENGINEERING CO.
WAVERLY

IOWA

DRAWN A A

DATE 9/28/90

APPROVED TDV

SCALE NONE

DWG. NO.