

PAUL HELLAND

Paul H. Helland, 1107 Technology Parkway, Cedar Falls, Iowa 50613-6951, (319)-266-0161

## UNITED STATES PUBLIC LAND SURVEY CORNER CERTIFICATE OF

LAND SURVEY MONUMENTS SITUATED IN SECTION NO. 3, TOWNSHIP NO. 89 NORTH, RANGE  
NO. 13 WEST OF THE FIFTH PRINCIPAL MERIDIAN, BLACK HAWK COUNTY, IOWA.

PREVIOUSLY RECORDED IN BOOK 293, PAGE 318.

(SHOW REASON FOR PREPARING THIS CERTIFICATE, THE EVIDENCE AND DETAILED PROCEDURES USED IN ESTABLISHING THE  
CORNER POSITIONS AND MONUMENTATION FOUND OR PLACED.)

### MONUMENT DESCRIPTION AND REMARKS:

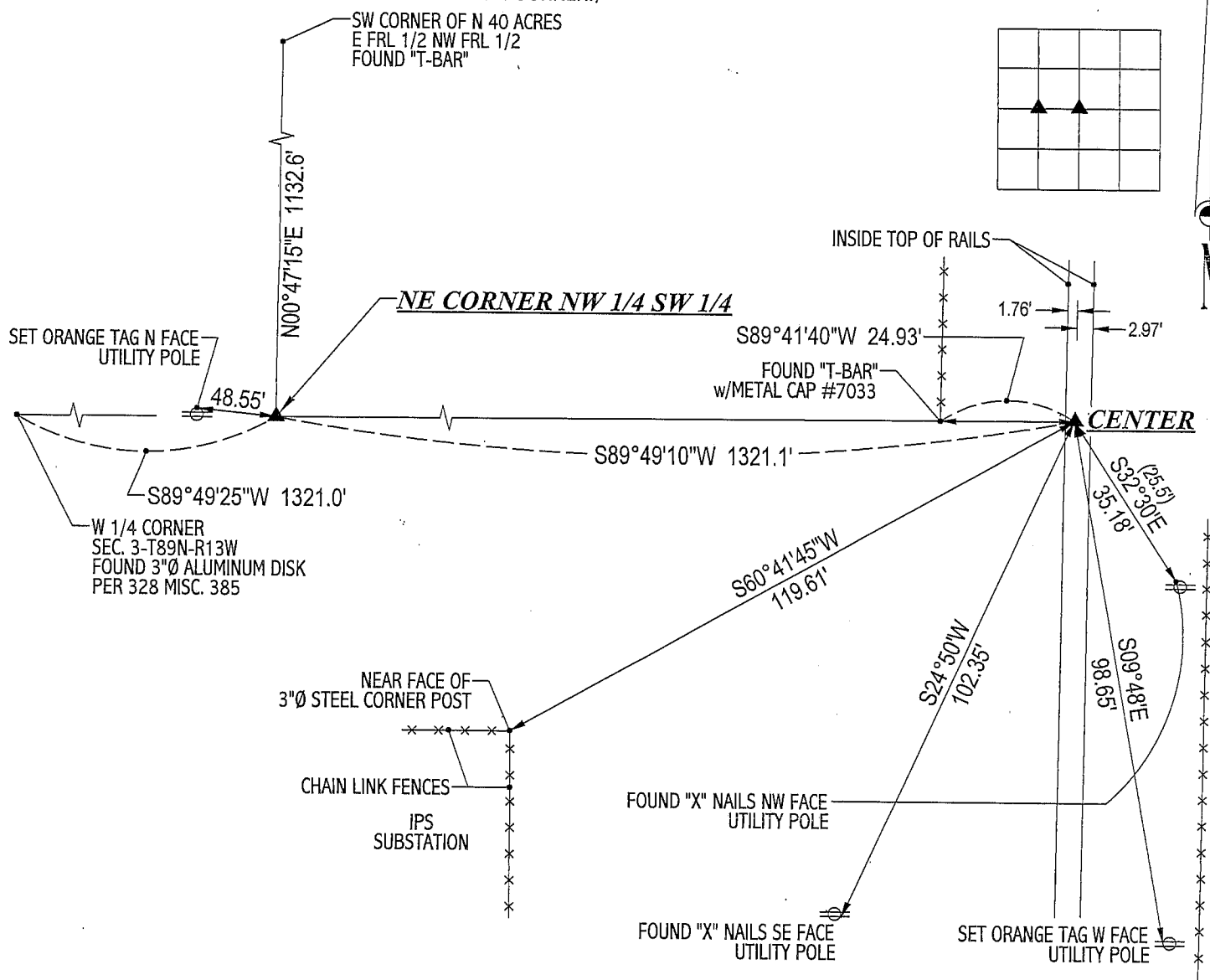
REFERENCE TIES HAVE CHANGED FOR CORNER CERTIFICATE RECORDED IN 293 MISC. 318 FOR THE CENTER. NO CORNER CERTIFICATE  
ON FILE FOR THE NE CORNER OF THE NW 1/4 SW 1/4. SURVEY DONE IN E FRL 1/2 NW FRL 1/4 OF SEC. 3-T89N-R13W.

CENTER: CORNER CERTIFICATE 293 MISC. 318 CALLS FOR A FOUND "T-BAR". FOUND "T-BAR" (NO CAP) IN BETWEEN RR TIES 0.1' DEEP  
w/PINK FLAGGING. THE "T-BAR" 'S LOCATION CORRESPONDS TO SURVEYS RECORDED IN 292 MISC. 489 & 293 MISC. 319.

NE CORNER OF NW 1/4 SW 1/4: NO COUNTY ENGINEER REFERENCE TIES EXIST. FOUND NO. 4 REBAR w/YELLOW CAP #8033. REBAR IS  
WITHIN A 0.1'Ø CIRCLE OF THE MIDPOINT BETWEEN THE W 1/4 CORNER (328 MISC. 385) AND THE CENTER OF SEC. 3-T89N-R13W.  
ONLY ONE DURABLE PHYSICAL OBJECT IN VICINITY OF CORNER TO REFERENCE.

### PLAN VIEW

(SHOW A MINIMUM OF THREE REFERENCE TIES TO DURABLE PHYSICAL OBJECTS, RELEVANT MONUMENTS AND PHYSICAL  
CONDITIONS THAT WILL ENABLE RECOVERY OF THE CORNER.)



**HELLAND ENGINEERING & SURVEYING, LTD.**  
1107 Technology Parkway  
Cedar Falls, Iowa 50613-6951  
(319)-266-0161

FILE NAME: 02-282CC.DRG



I hereby certify that this land surveying document was prepared  
and the related survey work was performed by me or under my  
direct personal supervision and that I am a duly licensed Land  
Surveyor under the laws of the State of Iowa.

*Paul H. Helland*  
Paul H. Helland  
License Number 6505  
My license renewal date is December 31, 2003.  
All pages or sheets are covered by this seal except:

### LIST CORNERS TO BE INDEXED

CORNER	SECTION	TOWNSHIP	RANGE
CENTER	3	89N	13W
NE CORNER NW 1/4 SW 1/4	3	89N	13W