

INDEXED
COMPARED
PAGED

BLACK HAWK COUNTY, IOWA:SS

Filed for record Nov 9 19 90

at 2:25 P M, and recorded in

Misc Book 293

Page 318

Genora Williams

Recorder

Deputy

Fee 5.00

Cedar Valley Engineering Company
PO Box 827
Waverly, IA 50677

Recorded

LAND SURVEY MONUMENT RECORD BLACK HAWK COUNTY, IA

Description of monument and evidence found at corner location.

"T" BAR - COUNTY RECORD

"T" BAR - FOUND

Sec. 3, T 89 N, R 13 W

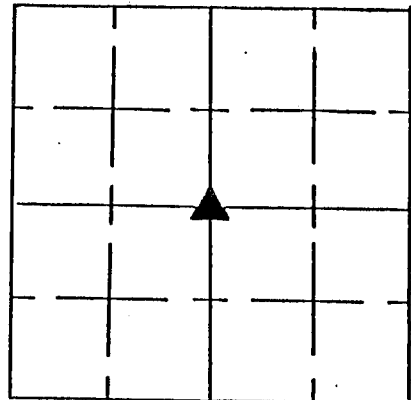
CENTER Corner.

Location:

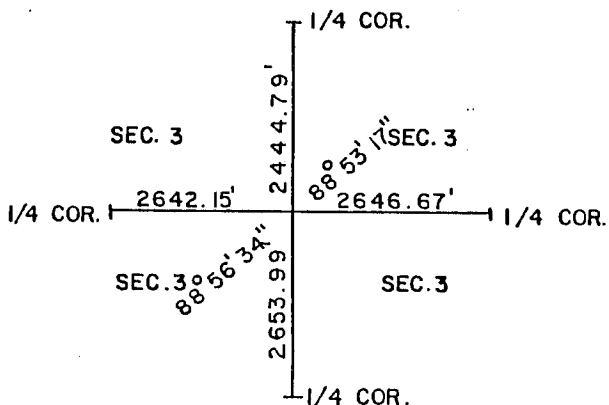
☐ Section Corner

☒ Quarter Corner

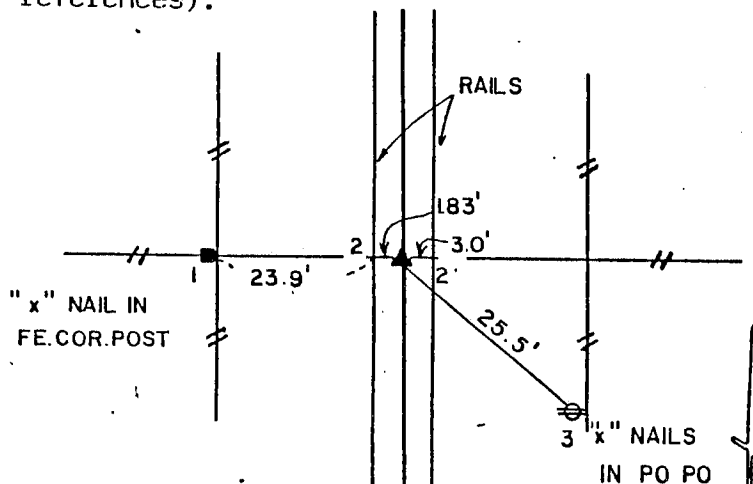
☐ Corner of Quarter/Quarter



Accessory information found at time of corner location.

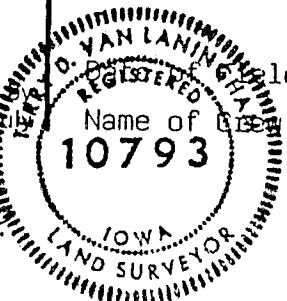


Sketch showing relative location of monument and reference points (minimum of three (3) references).



I hereby certify that this plat, map, survey, or report was made by me or under my direct personal supervision and that I am a Registered Land Surveyor under the laws of the State of Iowa.

Signed *Terry D. Van Laningham* Date *Oct 5 1990*
Terry D. Van Laningham, L.S. Iowa Reg. No. 10793



Fieldwork: SEPTEMBER, 18, 1990

Name of Client:

A. AKSOY

T. VAN LANINGHAM

CEDAR VALLEY ENGINEERING CO.
WAVERLY

IOWA

DRAWN A.A.

DATE 9/28/90

APPROVED TDV

SCALE NONE

DWG. NO.