

* Prepared by & Return to: Herold - Reicks Surveying, 2206 East Bremer Avenue, Waverly, IA 50677, Ph. 319-483-5187

UNITED STATES PUBLIC LAND SURVEY CORNER CERTIFICATE

Land Survey Monuments situated in Section 2, Township 89 North, Range 13 West of the Fifth Principal Meridian, **Black Hawk** County, Iowa. Previously recorded in **Bk. 330, Pg. 587** in the County Recorder's office.

This certificate is being prepared in compliance with Iowa Code Chapter 355.11 because:



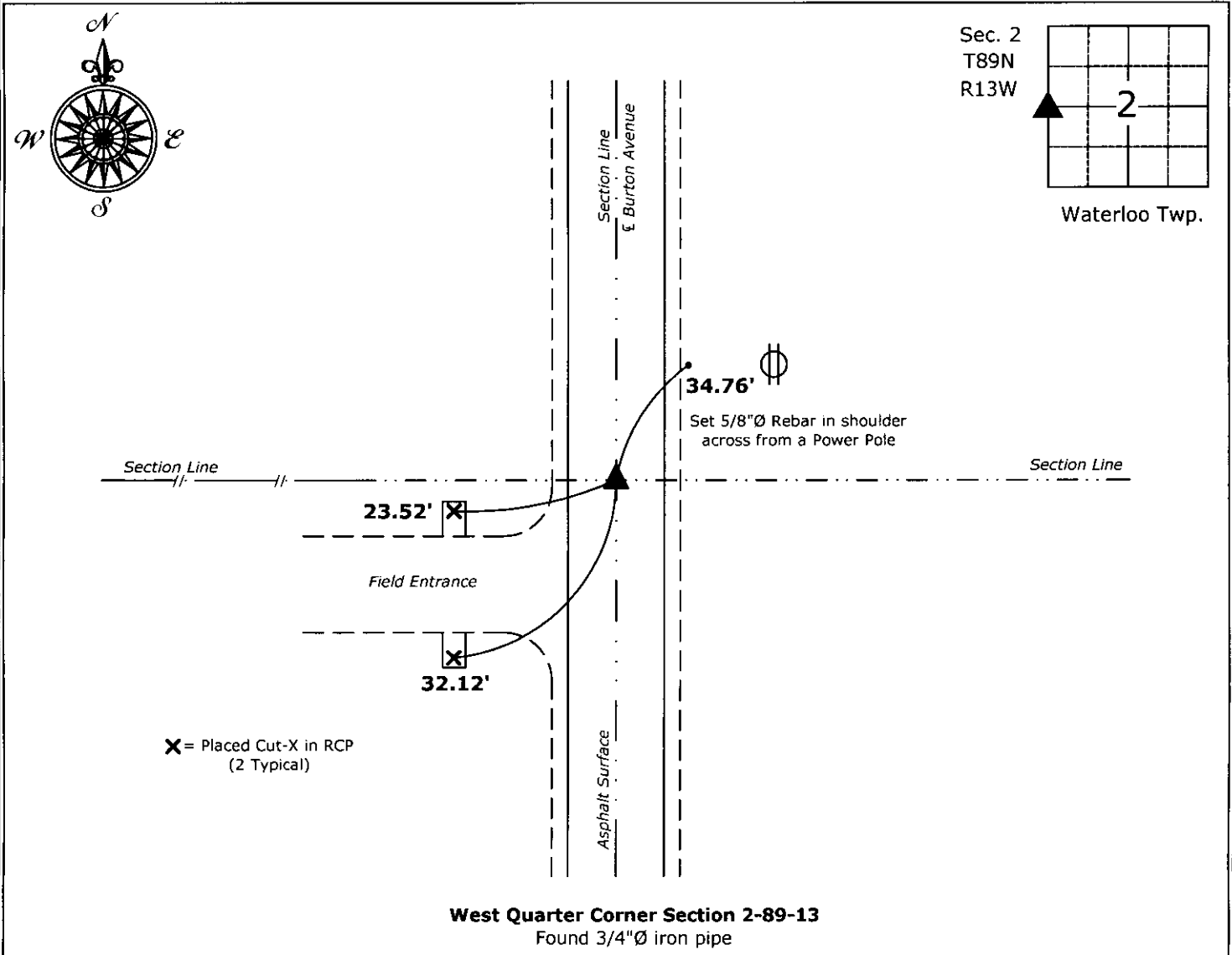
- ☐ There is no certificate on file for this corner.
- ☒ There are no longer three valid ties of record.
- ☐ There are changes to reference ties of record.
- ☐ There is change of monumentation of record.
- ☐ To clarify description of record monument (ties).

Monument Description and Remarks:

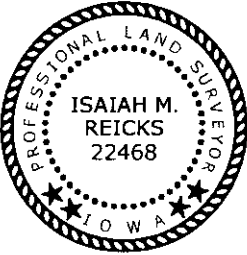
West 1/4 Corner: Found 3/4"Ø iron pipe with previous Section Corner Certificate, Book 330, Page 587.

PLAN - VIEW

(Show a minimum of three reference ties to durable physical objects, relevant monuments and physical conditions that will enable recovery of the corner.)



West Quarter Corner Section 2-89-13
Found 3/4"Ø iron pipe



I hereby certify that this land surveying document was prepared and the related survey work was performed by me or under my direct personal supervision and that I am a duly licensed Land Surveyor under the laws of the State of Iowa.

Isaiah M. Reicks 11-30-15
Isaiah M. Reicks Date:

License number 22468
My license renewal date is December 31, 2015.
Sheets covered by this seal: Individual sheet only

List Corners to be Indexed			
Corners	Section	Twp.	Range
WQ	2	89	13

Project Number: 2015-375

File Name: 2015-00010051 Seq.