

File **2020-00020854**

UNITED STATES PUBLIC LAND SURVEY CORNER CERTIFICATE
OF

Land Survey Monuments situated in Section 01, Township 89N, Range 13W
of the Fifth Principal Meridian, BLACK HAWK County, Iowa.

Previously recorded in BK 323, OF MISC. PG 413, &
BK 323, OF MISC. PG 414, in County Recorder's Office.
(book, page, document number, etc.)

(Show reason for preparing this certificate, the evidence and detailed procedures used in establishing the corner positions and monumentation found or placed.)

Monument Description and Remarks: NW CORNER: REPLACED PREVIOUSLY FOUND IDOT ALUMINUM DISC
WITH A MAG SPIKE/IDOT SEC. COR. WASHER *22293 7.2' EAST $\frac{1}{4}$ OF SOUTH BOUND LANE OF US 63 PER PREVIOUS
CERT OF RECORD BK 323, OF MISC. PG 413, OF AFTER RESURFACING PROJECT NHSN-063-(93)--2R-07.

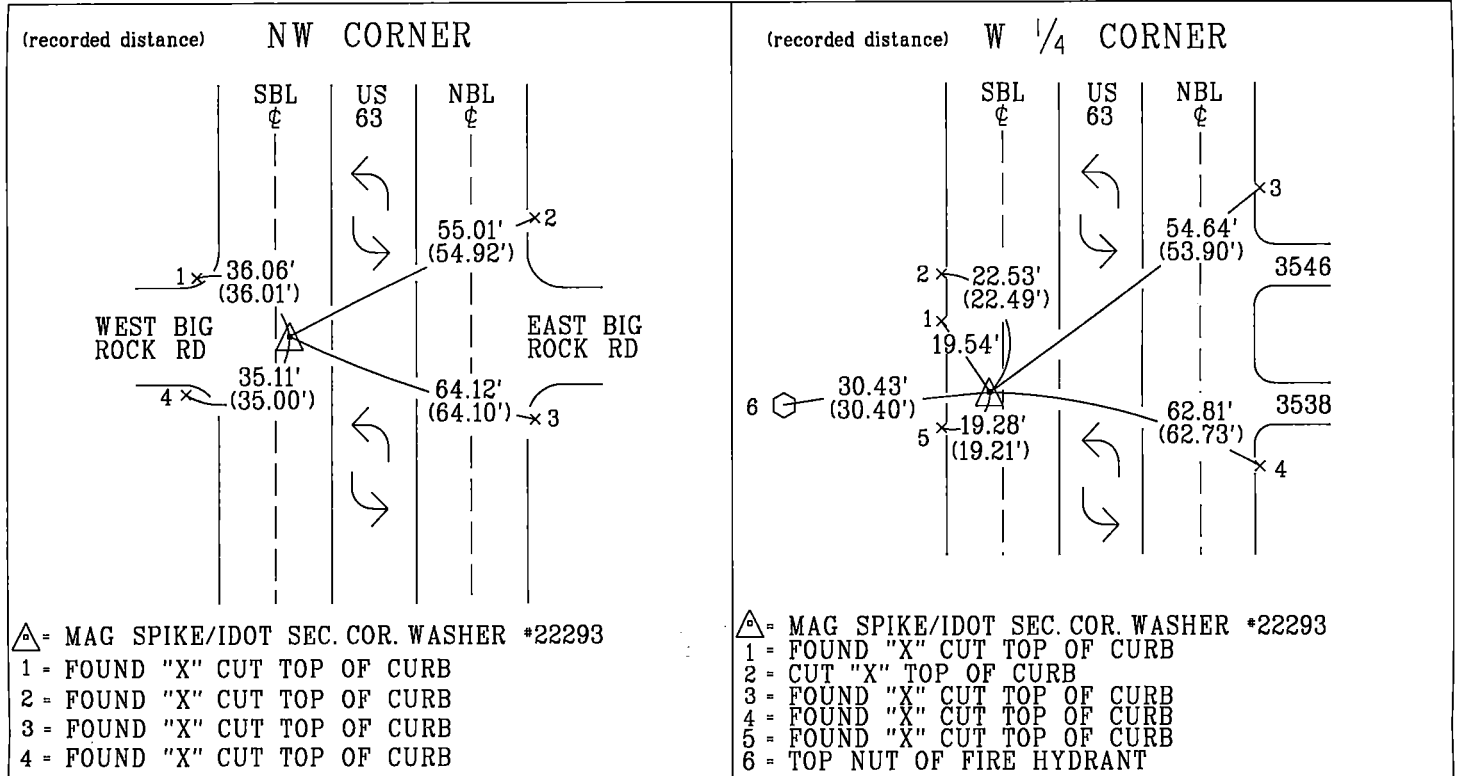
REASON FOR CERT: MONUMENTATION AND TIES HAVE CHANGED.

W 1/4 CORNER: REPLACED PREVIOUSLY FOUND IDOT ALUMINUM DISC WITH A MAG SPIKE IDOT SEC. COR. WASHER
*22293 4.5' WEST ϕ OF SOUTH BOUND LANE US 63 PER PREVIOUS CERT OF RECORD BK 323, OF
MISC. PAGE 414 AFTER RESURFACING PROJECT NHSN-063-(93)--2R-07.

REASON FOR CERT: MONUMENTATION AND TIES HAVE CHANGED.

PLAN - VIEW

(Show a minimum of three reference ties to durable physical objects, relevant monuments and physical conditions that will enable recovery of the corner.)



I hereby certify that this land surveying document was prepared and the related survey work was performed by me or under my personal supervision and that I am duly licensed professional Land Surveyor under the laws of the state of Iowa.

Miranda K Elders 5-26-2020
Miranda K. Elders Date

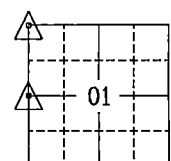
License number 22293

My License renewal date is December 31, 2021

Pages or sheets covered by this seal.

List Corners to be Indexed			
Corner	Section	Township	Range

NW CORNER	01	89N	13W
W 1/4 CORNER	01	89N	13W



07-01-89-13

drawn by: TM
 tied by: N/A
 right-of-way

File Number: 2020-00020854 Seq: 1

(7)