

SC
Misc
INDEX
MARGIN
PROOF
COMPARE

12242

BLACK HAWK COUNTY IOWA: SS

Filed for record Dec 26, 19 96 at

4:00 P.M. and recorded in Book 323

of Misc Page 413

Cathie A. Lass

Recorder

Fee 1-5.00/

WAYNE CLAASSEN ENGINEERING AND SURVEYING, INC.
P.O. BOX 898 WATERLOO, IOWA 50704-0898

PHONE: (VOICE) 319-235-6294
(FAX) 319-235-0028

UNITED STATES PUBLIC LAND SURVEY CORNER CERTIFICATE

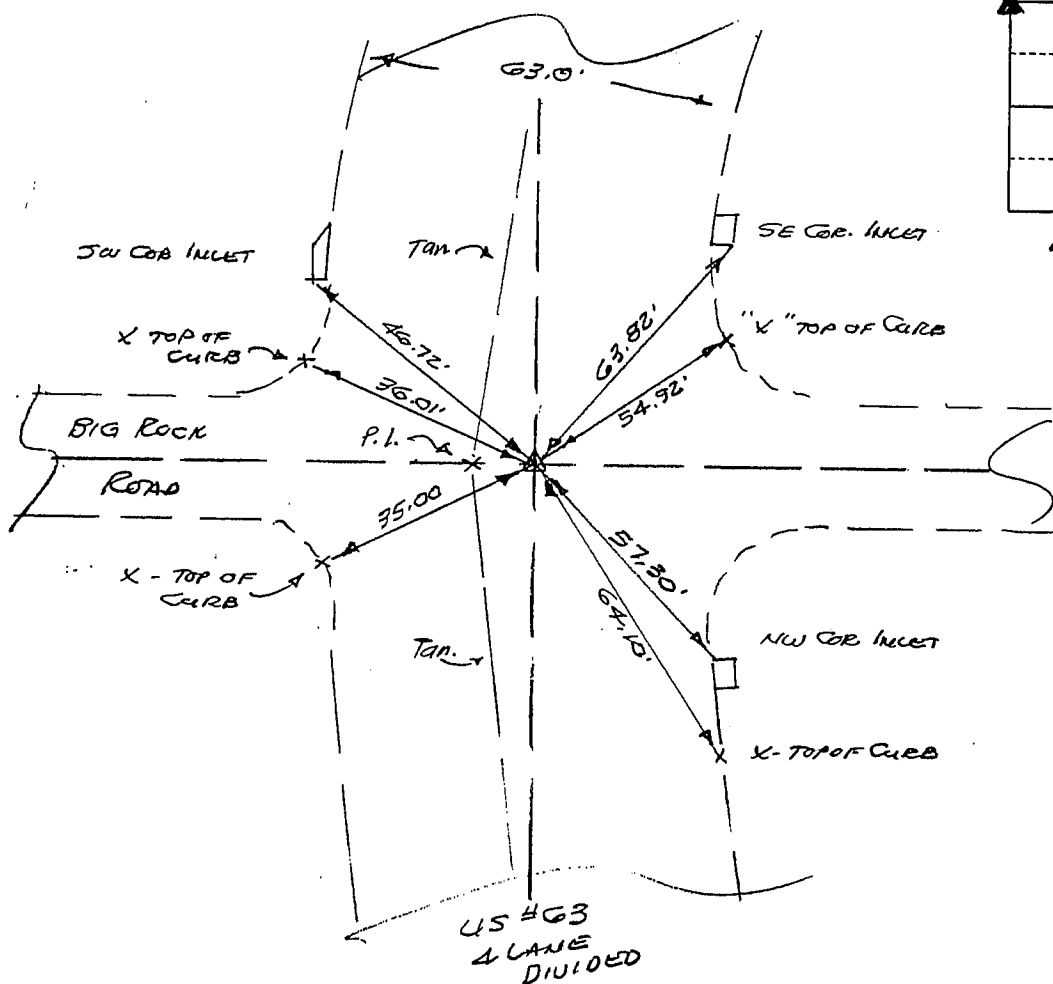
Land Survey Monuments situated in Section 1, Township 89N, Range 13W, of the Fifth Principal Meridian, BLACK HAWK County, Iowa.
Previously recorded in N/A in County Recorder's Office.
(book, page, document number, etc.)

(Show reason for preparing this certificate, the evidence and detailed procedures used in establishing the corner positions and monumentation found or placed.)

Monument Description and Remarks NW CORNER FND DOT ALUMINUM MON. FLUSH IN CONC.
4.10' E. OF "X" IN CONC. (P.I. 113+38.28 ~ US#63) PER DOT TIES
CORNER @ 20.15' E OF W. BK LINE

PLAN - VIEW

(Show a minimum of three reference ties to durable physical objects, relevant monuments and physical conditions that will enable recovery of the corner.)



439-71

I hereby certify that the survey work was completed and this certificate was prepared by me or under my direct personal supervision and that I am a duly licensed land surveyor under the laws of the state of Iowa.

Signature:

F. William King
(Name typed or printed:) F. William King

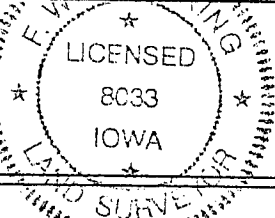
Date:

12-23-96

Lic. No.

8033

SEAL



List Corners to be Indexed

Corners	Section	Twp	Range
NW	1	89N	13W