

SC
Misc
INDEX
MARGIN
PROOF
COMPARE

12244

BLACK HAWK COUNTY IOWA: SS
Filed for record Dec 26, 1996 at
4:00 P.M. and recorded in Book 323
of Misc Page 415.

Patricia J. Liso

Recorder

Fee 1-5.00/
WAYNE CLAASSEN ENGINEERING AND SURVEYING, INC.
P.O. BOX 898 WATERLOO, IOWA 50704-0898

PHONE: (VOICE) 319-235-6294
(FAX) 319-235-0028

UNITED STATES PUBLIC LAND SURVEY CORNER CERTIFICATE

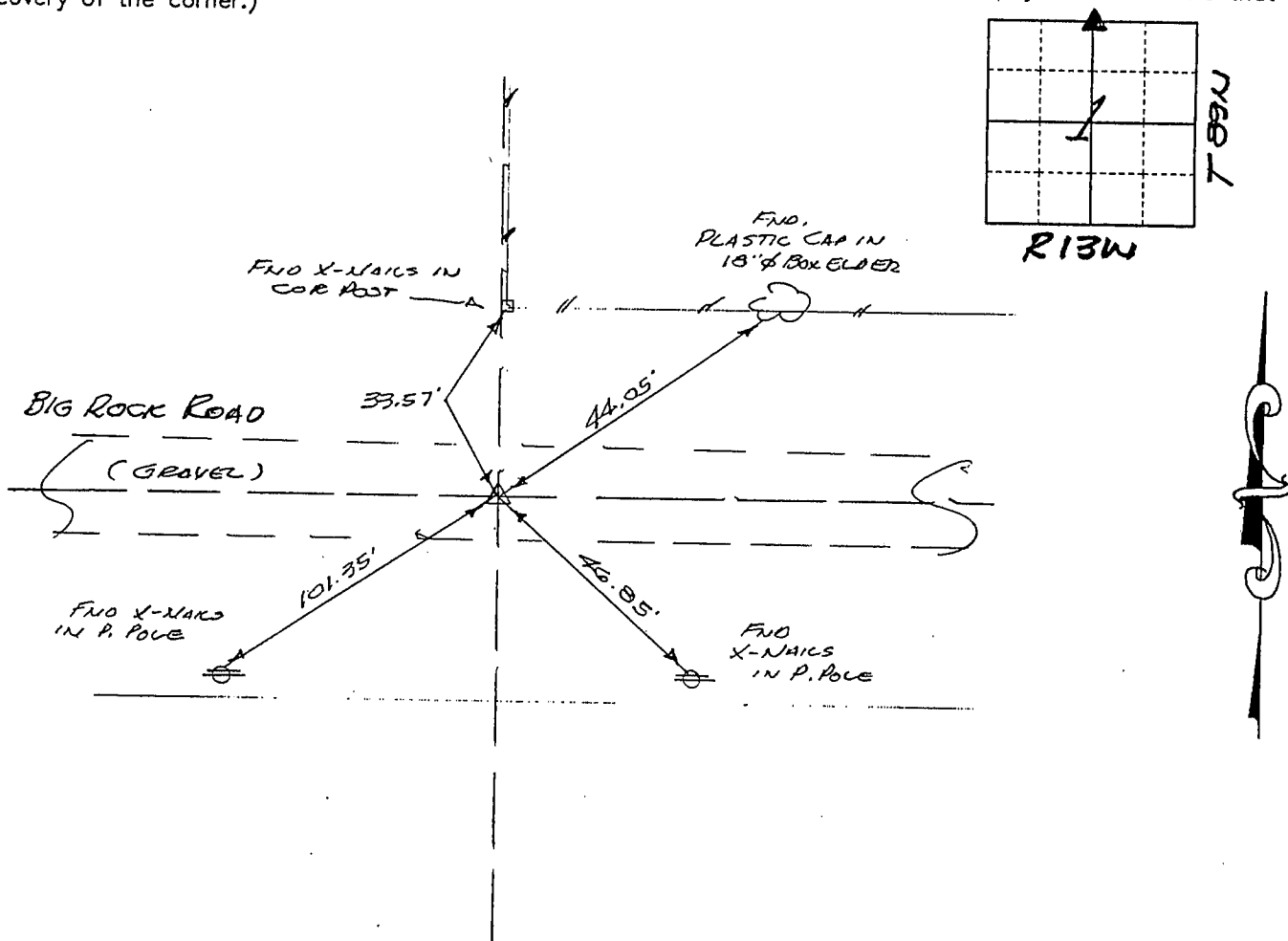
Land Survey Monuments situated in Section 1, Township 89N, Range R13W, of the Fifth Principal Meridian, BLACK HAWK County, Iowa
Previously recorded in N/A (book, page, document number, etc.) in County Recorder's Office

(Show reason for preparing this certificate, the evidence and detailed procedures used in establishing the corner position and monumentation found or placed.)

Monument Description and Remarks N¹/₄ COR. FOUND 1/2" Ø SOLID PIN 4" DEEP IN GRAVEL
PER CES TIES OF 1980.

PLAN - VIEW

(Show a minimum of three reference ties to durable physical objects, relevant monuments and physical conditions that will enable recovery of the corner.)



439-69

I hereby certify that the survey work was completed and this certificate was prepared by me or under my direct personal supervision and that I am a duly licensed land surveyor under the laws of the state of Iowa.

Signature: *F. William King*

(Name typed or printed:) F. WILLIAM KING

Date: 12-23-1996

Lic. No. 8033

SEAL

LICENSED

8033

IOWA

List Corners to be Indexed

Corners	Section	Twp	Range
<u>N¹/₄</u>	<u>1</u>	<u>89N</u>	<u>13W</u>

BOOK 323 PAGE 415