

of Misc Page 998
Patricia S. Lee Recorder

Fee 1-5.00/

WAYNE CLAASSEN ENGINEERING AND SURVEYING INC

WAYNE CLAASSEN ENGINEERING AND SURVEYING, INC.
P.O. BOX 898 WATERLOO, IOWA 50704-0898

PHONE: (VOICE) 319-235-6294
(FAX) 319-235-0028

UNITED STATES PUBLIC LAND SURVEY CORNER CERTIFICATE

Land Survey Monuments situated in Section 1, Township 89N, Range 13W, of the Fifth Principal Meridian, BLACK HAWK County, Iowa.

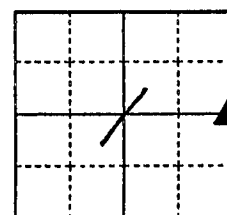
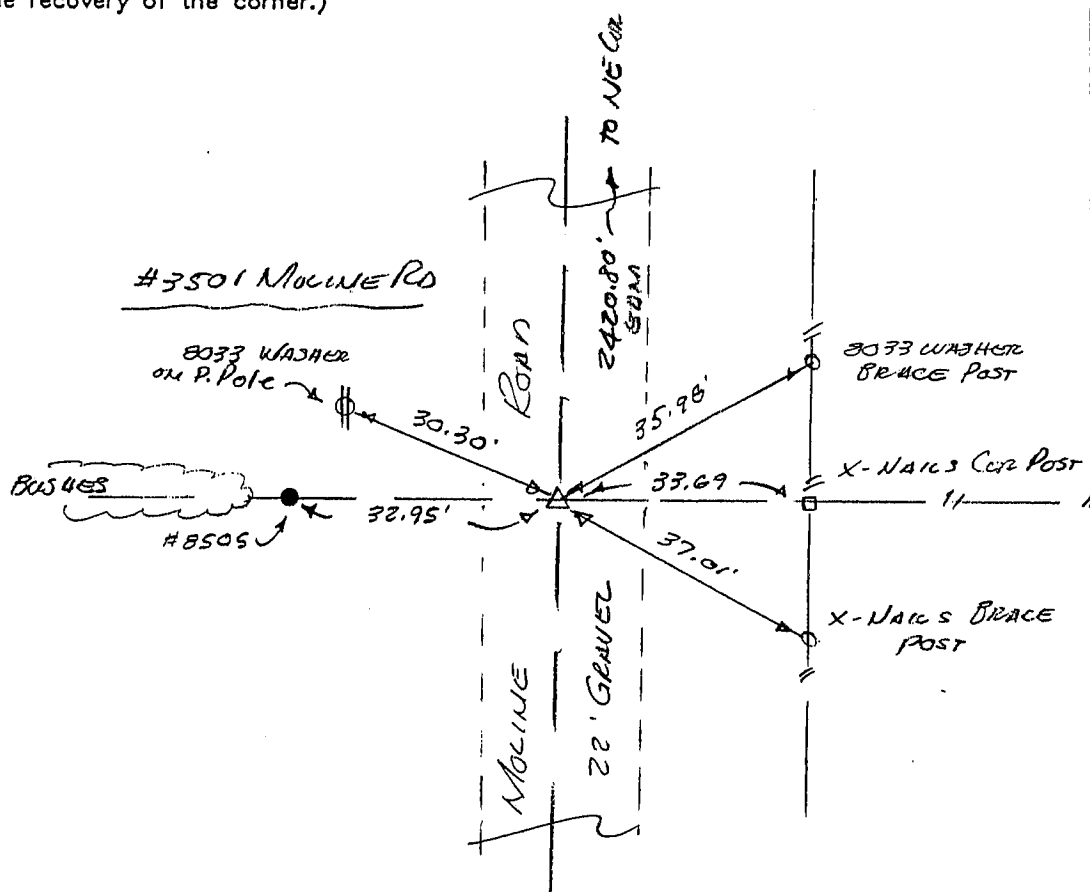
Previously recorded in N/A in County Recorder's Office.
(book, page, document number, etc.)

(Show reason for preparing this certificate, the evidence and detailed procedures used in establishing the corner positions and monumentation found or placed.)

Monument Description and Remarks EAST 1/4 CORNER, FOUND 3 1/4" Ø CLIP PIPE 6" DEEP IN GRAVEL ROAD. CES FOUND THIS SAME PIN IN 1970.

PLAN - VIEW

(Show a minimum of three reference ties to durable physical objects, relevant monuments and physical conditions that will enable recovery of the corner.)



213k

1007

500-41

I hereby certify that the survey work was completed and this certificate was prepared by me or under my direct personal supervision and that I am a duly licensed land surveyor under the laws of the state of Iowa.

Signature:

(Name typed or printed:) F. WILLIAM KING

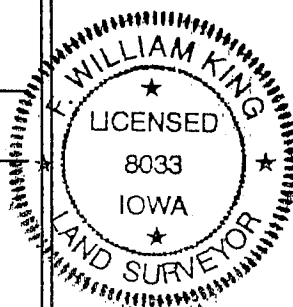
Date: APRIL 13, 1999

Lic. No. 8033

SEAL

List Corners to be Indexed

Corners	Section	Twp	Range
E 1/4	1	89N	13W



DOCK 333-998