

I *dw*

Document Number: 2008015668

Date: Feb 11, 2008 1:57:49 pm

Aud Fee: 0.00 Rec Fee: 5.00

Trans Tax: 0.00 Rec Management Fee: 1.00

E-Com Fee: 1.00 Non-Standard Page Fee: 0.00

P

Filed for record in Black Hawk County, Iowa
Judith A. McCarthy, County Recorder

Z

Jeffrey P. Helland, 1107 Technology Parkway, Cedar Falls, Iowa 50613-6951, (319)-266-0161

UNITED STATES PUBLIC LAND SURVEY CORNER CERTIFICATE OF

LAND SURVEY MONUMENTS SITUATED IN SECTION NO. 36, TOWNSHIP NO. 89 NORTH, RANGE
NO. 12 WEST OF THE FIFTH PRINCIPAL MERIDIAN, BLACK HAWK COUNTY, IOWA.

PREVIOUSLY RECORDED IN FEE BOOK #2006 13149

(SHOW REASON FOR PREPARING THIS CERTIFICATE, THE EVIDENCE AND DETAILED PROCEDURES USED IN ESTABLISHING THE
CORNER POSITIONS AND MONUMENTATION FOUND OR PLACED.)

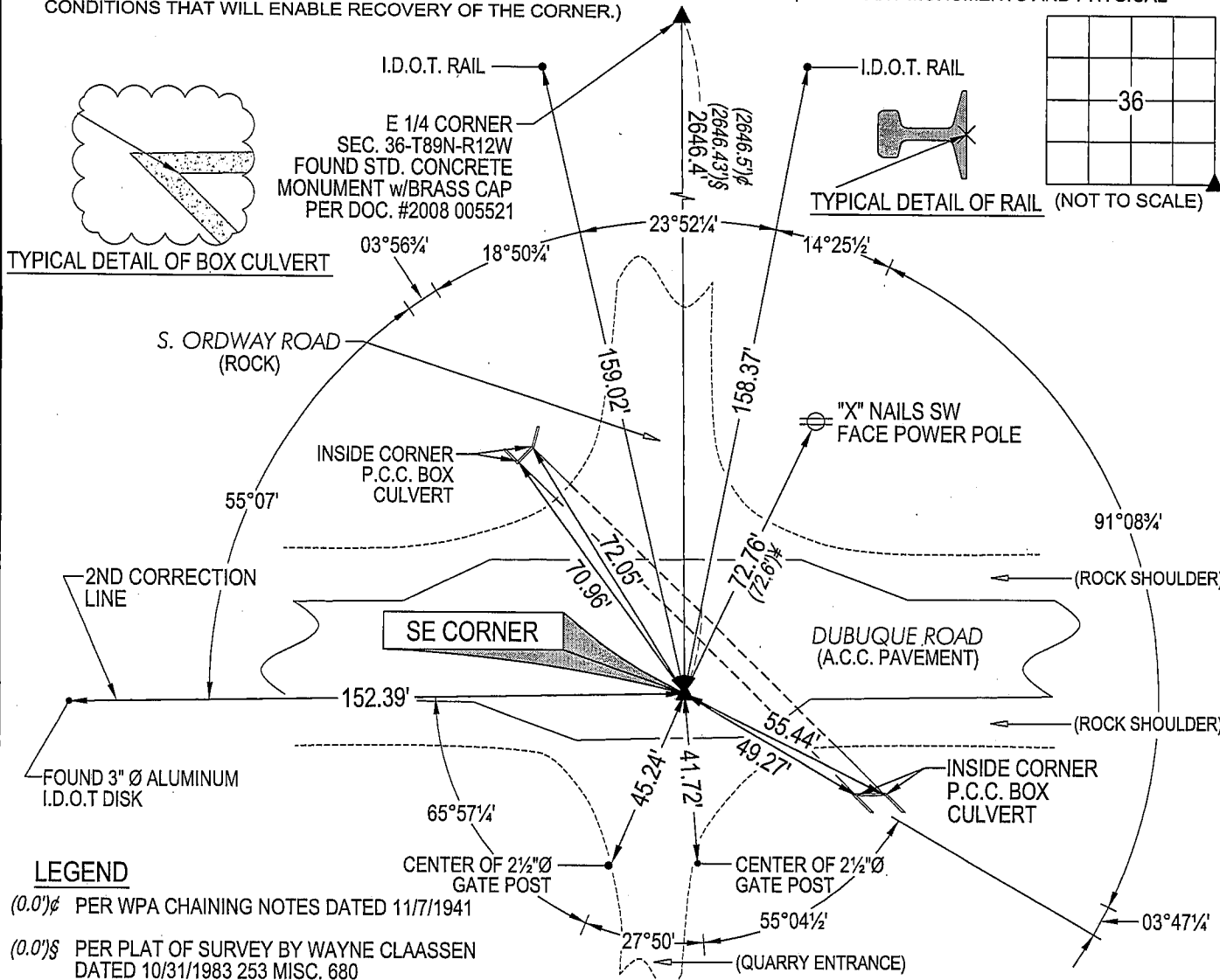
MONUMENT DESCRIPTION AND REMARKS:

USPLSCC FEE BOOK #2006 13149 REFERENCE DISTANCES DO NOT MEET MINIMUM STANDARDS. SURVEY
COMPLETED IN THE NE 1/4 SE 1/4 OF SEC. 36-T89N-R12W.

→ **SE CORNER:** BLACK HAWK COUNTY ENGINEER'S OFFICE FIELD BOOK 115 PAGE 45 DATED 4/14/1932 CALLS
FOR [SET IRON PIN]. WPA CHAINING NOTES DATED 7/18/1941 CALLS FOR [S.C.M.] USPLSCC FEE BOOK #2006
13149 CALLS FOR [FOUND 3" DIAMETER ALUMINUM DISC AT SURFACE OF ASPHALT PAVEMENT DUBUQUE
ROAD]. FOUND 3"Ø ALUMINUM I.D.O.T. MARKER IN A.C.C. PAVEMENT. CORNER IS 205.5'± SOUTH OF
CENTERLINE OF CANADIAN NATIONAL RAILWAY CO. (FORMERLY ILLINOIS CENTRAL RAILROAD) TRACKS.

PLAN VIEW

(SHOW A MINIMUM OF THREE REFERENCE TIES TO DURABLE PHYSICAL OBJECTS, RELEVANT MONUMENTS AND PHYSICAL
CONDITIONS THAT WILL ENABLE RECOVERY OF THE CORNER.)



LEGEND

(0.0)'± PER WPA CHAINING NOTES DATED 11/7/1941

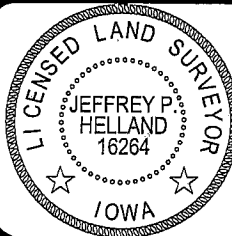
(0.0)'± PER PLAT OF SURVEY BY WAYNE CLAASSEN
DATED 10/31/1983 253 MISC. 680

(0.0)'± PER USPLSCC FEE BOOK #2006 13149



HELLAND ENGINEERING & SURVEYING, LTD.
1107 Technology Parkway
Cedar Falls, Iowa 50613-6951
(319)-266-0161

SHINER = 8D NAIL & 1 5/16"Ø METAL SHINER
BRASS TAG = 13/16"Ø BRASS TAG
OPC = PLASTIC CAP (O=ORANGE, R=RED, Y=YELLOW)
(00') RECORDED AS FILE NAME: 08-115C1.DWG



I hereby certify that this land surveying document was prepared
and the related survey work was performed by me or under my
direct personal supervision and that I am a duly licensed Land
Surveyor under the laws of the State of Iowa.

Jeffrey P. Helland 2/6/08
Jeffrey P. Helland
License Number 16264
My license renewal date is December 31, 2009.
All pages or sheets are covered by this seal except:

LIST CORNERS TO BE INDEXED

CORNER	SECTION	TOWNSHIP	RANGE
SE CORNER	36	89N	12W