

I dw  
P  
Z

Filed for record in Black Hawk County, Iowa  
Judith A. McCarthy, County Recorder

# UNITED STATES PUBLIC LAND SURVEY CORNER CERTIFICATE OF

PREVIOUSLY RECORDED IN N/A

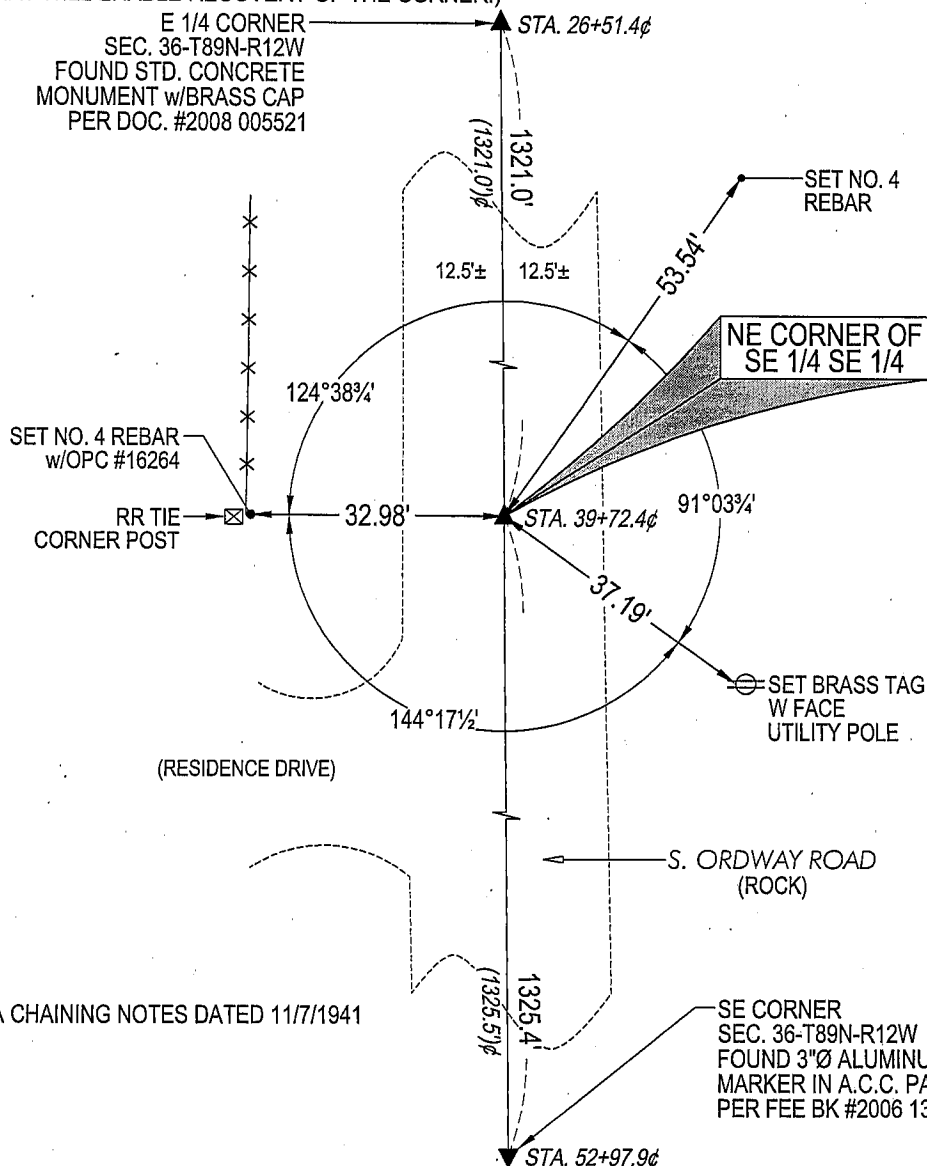
MONUMENT DESCRIPTION AND REMARKS:

NO USPLSCC ON FILE. SURVEY COMPLETED IN THE SE 1/4 OF SEC. 9-T83N-R11W.

**NE CORNER SE 1/4 SE 1/4:** NO BLACK HAWK COUNTY ENGINEER REFERENCE TIES AVAILABLE. PLAT BOOK MAP OF POYNER TOWNSHIP BY IOWA PUBLISHING CO.'S 1910 ATLAS SHOWS DIFFERENT PROPRIETOR'S ON EACH SIDE OF THE LINE BETWEEN THE NE 1/4 SE 1/4 AND THE SE 1/4 SE 1/4. WPA CHAINING NOTES DATED 11/7/1941 INDICATES FENCES RUNNING EAST & WEST FROM STA. 39+72.4. SET "COTTON GIN SPIKE" IN ROCK ROAD ON A STRAIGHT LINE BETWEEN THE E 1/4 CORNER AND THE SE CORNER AND IN LINE w/FENCE RUNNING WEST (RR TIE CORNER POST) CORRESPONDING TO WPA CHAINING NOTE DISTANCES.

### PLAN VIEW

(SHOW A MINIMUM OF THREE REFERENCE TIES TO DURABLE PHYSICAL OBJECTS, RELEVANT MONUMENTS AND PHYSICAL CONDITIONS THAT WILL ENABLE RECOVERY OF THE CORNER.)



## LEGEND

(0.0')~~c~~ PER WPA CHAINING NOTES DATED 11/7/1941



**HELLAND ENGINEERING & SURVEYING, LTD.**  
1107 Technology Parkway  
Cedar Falls, Iowa 50613-6951  
(319)-266-0161

I hereby certify that this land surveying document was prepared and the related survey work was performed by me or under my direct personal supervision and that I am a duly licensed Land Surveyor under the laws of the State of Iowa.

Jeffrey P. Hellard 2/6/08  
 Jeffrey P. Hellard  
 License Number 16264  
 My license renewal date is December 31, 2009.  
 All pages or sheets are covered by this seal except:

SHINER = 8D NAIL & 1 5/16"Ø METAL SHINER  
BRASS TAG = 13/16"Ø BRASS TAG  
OPC = PLASTIC CAP (O=ORANGE, R=RED, Y=YELLOW)  
(00') RECORDED AS FILE NAME: 08-115C2.DWG

LIST CORNERS TO BE INDEXED

CORNER	SECTION	TOWNSHIP	RANGE
NE CORNER SE 1/4 SE 1/4	36	89N	12W