

Jeffrey P. Helland, 1107 Technology Parkway, Cedar Falls, Iowa 50613-6951, (319)-266-0161

UNITED STATES PUBLIC LAND SURVEY CORNER CERTIFICATE
OFLAND SURVEY MONUMENTS SITUATED IN SECTION NO. 36, TOWNSHIP NO. 89 NORTH, RANGE
NO. 12 WEST OF THE FIFTH PRINCIPAL MERIDIAN, BLACK HAWK COUNTY, IOWA.
PREVIOUSLY RECORDED IN N/A(SHOW REASON FOR PREPARING THIS CERTIFICATE, THE EVIDENCE AND DETAILED PROCEDURES USED IN ESTABLISHING THE
CORNER POSITIONS AND MONUMENTATION FOUND OR PLACED.)

MONUMENT DESCRIPTION AND REMARKS:

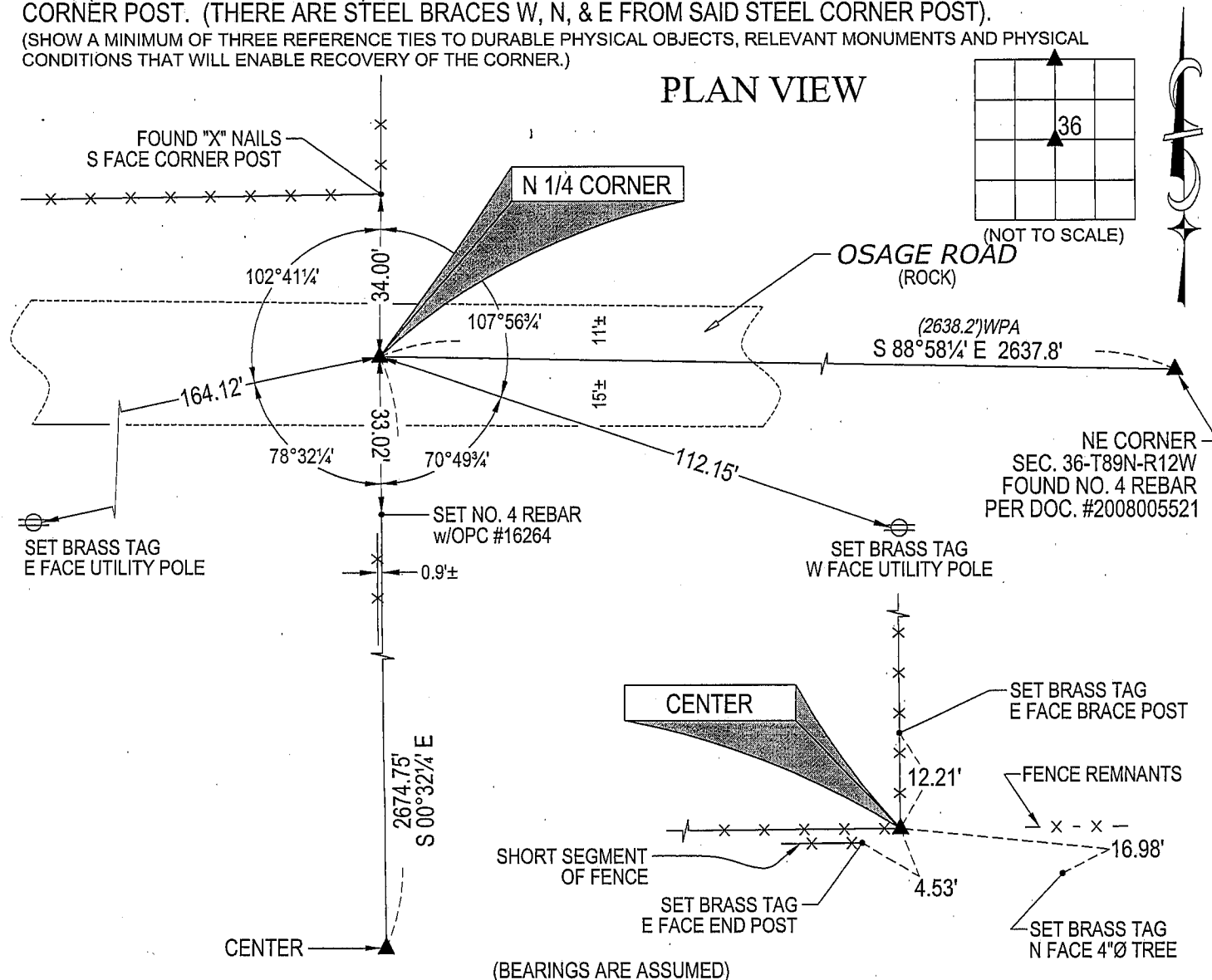
NO USPLSCC ON FILE. SURVEY COMPLETED IN THE NE 1/4 OF SEC. 36-T89N-R12W.

→ **N 1/4 CORNER:** BLACK HAWK COUNTY ENGINEER REFERENCE TIES CALL FOR [FOUND MON. 3' DEEP SET IRON BAR 4" DEEP] & [R. R. D. RETIED 4/14/78]. WPA CHAINING NOTES DATED 5/2/1938 CALLS FOR [FOUND STONE 10"x8"x7" NO OTHER EVIDENCE. LOWERED STONE AND SET C.M. ON TOP 12" DEEP]. USPLSCC BY PAUL HELLAND DATED 2/20/1991 FOUND IN THE ENGINEER'S OFFICE CALLS FOR [FOUND 5/8" PIN]. FOUND 5/8"Ø IRON PIN 0.3± DEEP.

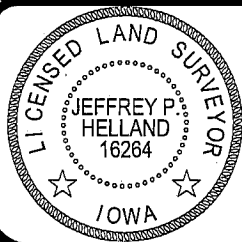
→ **CENTER:** NO BLACK HAWK COUNTY ENGINEER REFERENCE TIES AVAILABLE. AUDITOR KOOB'S PLAT NO. 3 DATED 11/1948 CALLS FOR [STEEL POST SET IN CONCRETE]. PLAT OF SURVEY BK 170 PG 189 DATED 1/19/1967 CALLS FOR [STEEL POST SET IN CONCRETE]. FOUND 0.32'Ø STEEL POST CORRODED OFF AT THE BASE (BASE SET IN CONCRETE). SET NO. 4 REBAR w/OPC #16264 IN CENTER OF SAID BROKEN OFF STEEL CORNER POST. (THERE ARE STEEL BRACES W, N, & E FROM SAID STEEL CORNER POST).

(SHOW A MINIMUM OF THREE REFERENCE TIES TO DURABLE PHYSICAL OBJECTS, RELEVANT MONUMENTS AND PHYSICAL
CONDITIONS THAT WILL ENABLE RECOVERY OF THE CORNER.)

PLAN VIEW



(BEARINGS ARE ASSUMED)

HELLAND ENGINEERING & SURVEYING, LTD.
1107 Technology Parkway
Cedar Falls, Iowa 50613-6951
(319)-266-0161SHINER = 8D NAIL & 1 5/16\"Ø METAL SHINER
BRASS TAG = 13/16\"Ø BRASS TAG
OPC = PLASTIC CAP (O=ORANGE, R=RED, Y=YELLOW)
(00) RECORDED AS FILE NAME: 08-111C1.DWGI hereby certify that this land surveying document was prepared
and the related survey work was performed by me or under my
direct personal supervision and that I am a duly licensed Land
Surveyor under the laws of the State of Iowa.Jeffrey P. Helland 1/29/08
Jeffrey P. Helland
License Number 16264
My license renewal date is December 31, 2009.
All pages or sheets are covered by this seal except:

LIST CORNERS TO BE INDEXED

CORNER	SECTION	TOWNSHIP	RANGE
N 1/4 CORNER	36	89N	12W
CENTER	36	89N	12W

Rec.