

Paul H. Helland, 1107 Technology Parkway, Cedar Falls, Iowa 50613-6951, (319)-266-0161

UNITED STATES PUBLIC LAND SURVEY CORNER CERTIFICATE OF

LAND SURVEY MONUMENTS SITUATED IN SECTION NO. 36, TOWNSHIP NO. 89 NORTH, RANGE
NO. 12 WEST OF THE FIFTH PRINCIPAL MERIDIAN, BLACK HAWK COUNTY, IOWA.
PREVIOUSLY RECORDED IN NE - 310 MISC 427 E 1/4 - FEE BOOK #2006-13150.

(SHOW REASON FOR PREPARING THIS CERTIFICATE, THE EVIDENCE AND DETAILED PROCEDURES USED IN ESTABLISHING THE CORNER POSITIONS AND MONUMENTATION FOUND OR PLACED.)

MONUMENT DESCRIPTION AND REMARKS:

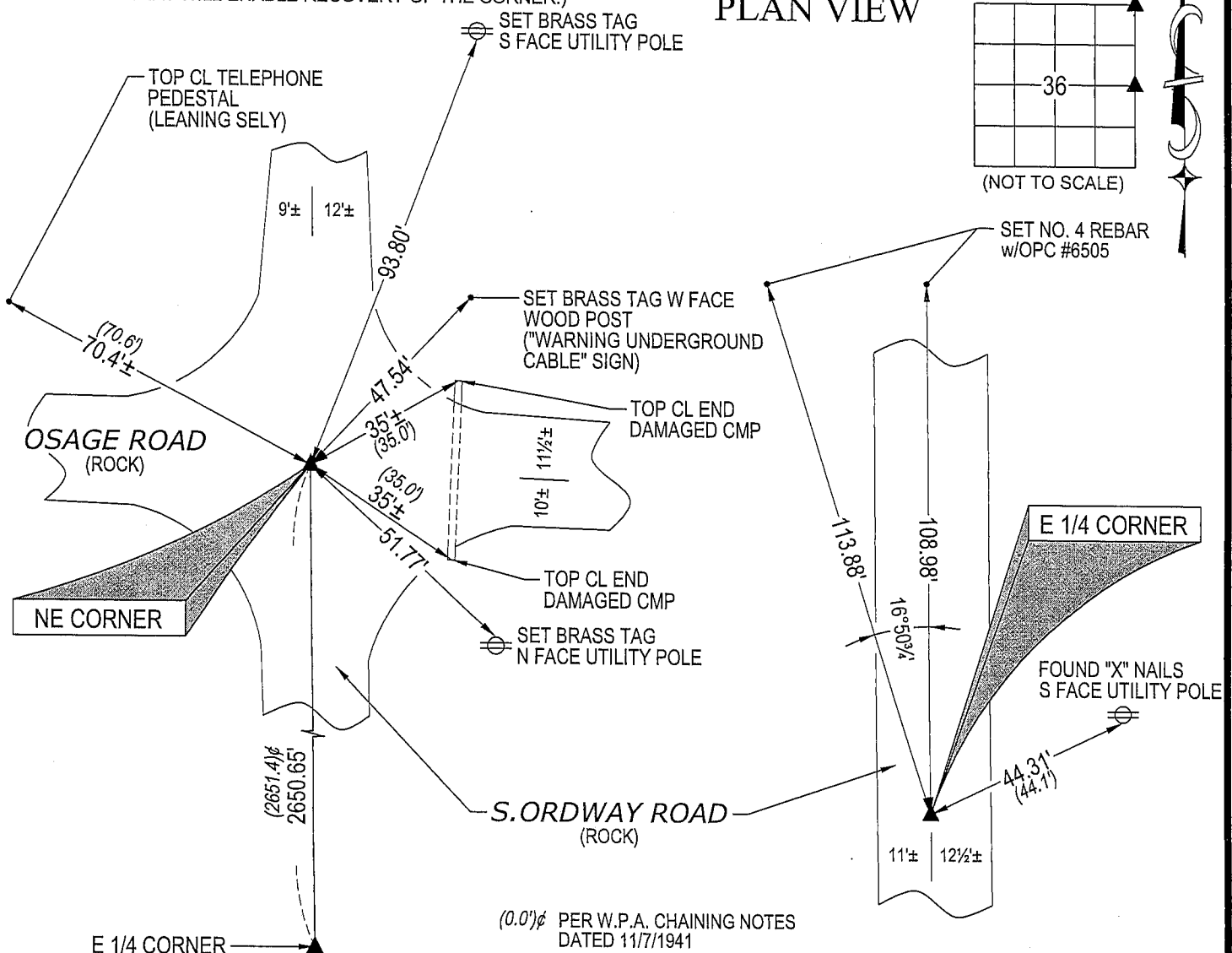
USPLSCC 310 MISC. 427 REFERENCE TIES HAVE CHANGED. USPLSCC FEE BOOK #2006-13150 MONUMENTION
HAS CHANGED. SURVEY COMPLETED IN THE SE 1/4 OF THE NE 1/4 OF SEC. 36-T89N-R12W.
NE CORNER: BLACK HAWK COUNTY MONUMENTION

→ **NE CORNER:** BLACK HAWK COUNTY ENGINEER REFERENCE TIES CALL FOR [1/2"Ø REBAR (FOUND)]. USPLSCC RECORDED IN 310 MISC 427 CALLS FOR [FOUND 1/2"Ø REBAR USING CES TIES OF 10-1983]. FOUND NO. 4 REBAR 0.4' DEEP CORRESPONDING WITHIN REASON TO SAID TIES.

→ **E 1/4 CORNER:** NO BLACK HAWK COUNTY ENGINEER REFERENCE TIES AVAILABLE. USPLSCC RECORDED IN FEE BK #2006-13150 CALLS FOR [FOUND 1/2" IRON BAR AT SURFACE OF GRANULAR SURFACED SOUTH ORDWAY ROAD]. FOUND BENT NO. 4 REBAR (0.5' LONG) 0.2' DEEP. REMOVED REBAR AND FOUND STD. CONCRETE MONUMENT w/BRASS CAP 0.5' DEEP 0.1' WEST OF REBAR LOCATION. MAGNETIC SOUNDING ON THE W SIDE OF SAID MONUMENT. UTILIZED C.M. AS MONUMENT.

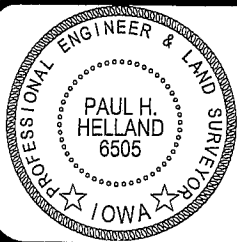
(SHOW A MINIMUM OF THREE REFERENCE TIES TO DURABLE PHYSICAL OBJECTS, RELEVANT MONUMENTS AND PHYSICAL CONDITIONS THAT WILL ENABLE RECOVERY OF THE CORNER.)

PLAN VIEW



HELLAND ENGINEERING & SURVEYING, LTD.
1107 Technology Parkway
Cedar Falls, Iowa 50613-6951
(319)-266-0161

SHINER = 8D NAIL & 1 5/16"Ø METAL SHINER
BRASS TAG = 13/16"Ø BRASS TAG
OPC = PLASTIC CAP (O=ORANGE, R=RED, Y=YELLOW)
(00') RECORDED AS FILE NAME: 07-221C1.DWG



I hereby certify that this land surveying document was prepared and the related survey work was performed by me or under my direct personal supervision and that I am a duly licensed Land Surveyor under the laws of the State of Iowa.

Paul H. Helland
License Number 6505
My license renewal date is December 31, 2007.
All pages or sheets are covered by this seal except:

LIST CORNERS TO BE INDEXED

CORNER	SECTION	TOWNSHIP	RANGE
NE CORNER	36	89N	12W
E 1/4 CORNER	36	89N	12W