

HELLAND ENGINEERING

I
P
Z

Document Number: 2008016011
Date: Feb 15, 2008 4:30:00 pm
Aud Fee: 0.00 Rec Fee: 5.00
Trans Tax: 0.00 Rec Management Fee: 1.00
E-Com Fee: 1.00 Non-Standard Page Fee: 0.00
Filed for record in Black Hawk County, Iowa
Judith A. McCarthy, County Recorder

Jeffrey P. Helland, 1107 Technology Parkway, Cedar Falls, Iowa 50613-6951, (319)-266-0161

UNITED STATES PUBLIC LAND SURVEY CORNER CERTIFICATE
OF

LAND SURVEY MONUMENTS SITUATED IN SECTION NO. 36, TOWNSHIP NO. 89 NORTH, RANGE NO. 12 WEST OF THE FIFTH PRINCIPAL MERIDIAN, BLACK HAWK COUNTY, IOWA.
PREVIOUSLY RECORDED IN N/A

(SHOW REASON FOR PREPARING THIS CERTIFICATE, THE EVIDENCE AND DETAILED PROCEDURES USED IN ESTABLISHING THE CORNER POSITIONS AND MONUMENTATION FOUND OR PLACED.)

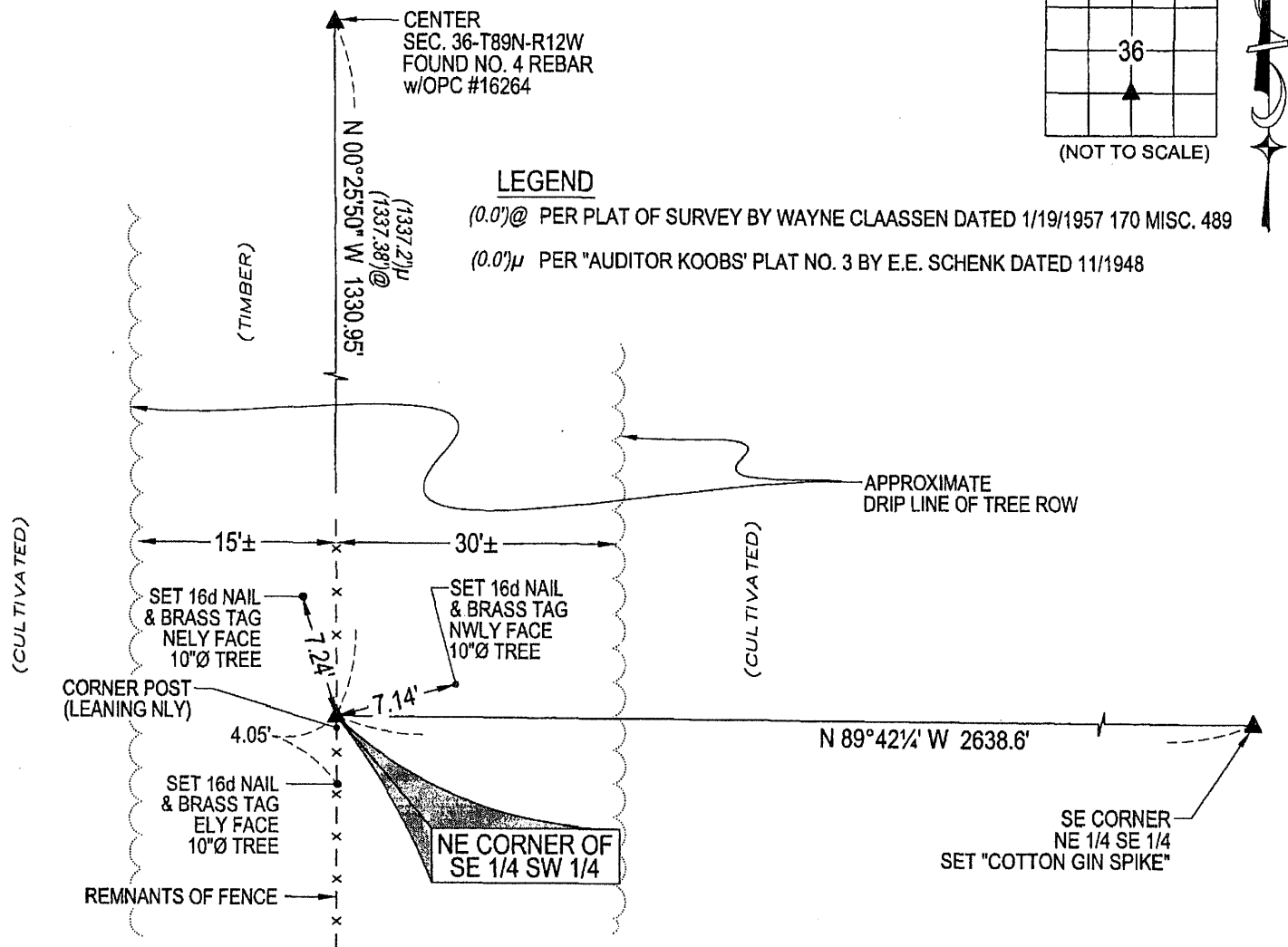
MONUMENT DESCRIPTION AND REMARKS:

NO USPLSCC ON FILE. SURVEY COMPLETED IN THE NE 1/4 SE 1/4 OF SEC. 36-T89N-R12W.

NE CORNER OF SE 1/4 SW 1/4: NO BLACK HAWK COUNTY ENGINEER REFERENCE TIES AVAILABLE. "AUDITOR KOOBS' PLAT NO. 3 BY E.E. SCHENK DATED 11/1948 CALLS FOR [IRON STAKE SET]. PLAT OF SURVEY BY WAYNE CLAASSEN DATED 1/19/1957 170 MISC. 489 INDICATES CORNER AS BEING SET. FOUND 1"o.d. IRON PINCHED PIPE EXPOSED 0.5'± JUST NORTH OF CORNER POST. PINCHED PIPE BENT SLIGHTLY SOUTHERLY, STRAIGHTENED. TOP OF SAID PINCHED PIPE IS 0.3'± ABOVE GRADE.

PLAN VIEW

(SHOW A MINIMUM OF THREE REFERENCE TIES TO DURABLE PHYSICAL OBJECTS, RELEVANT MONUMENTS AND PHYSICAL CONDITIONS THAT WILL ENABLE RECOVERY OF THE CORNER.)



(BEARINGS ARE ASSUMED)



HELLAND ENGINEERING & SURVEYING, LTD.
1107 Technology Parkway
Cedar Falls, Iowa 50613-6951
(319)-266-0161

SHINER = 8D NAIL & 1 5/16"Ø METAL SHINER
BRASS TAG = 13/16"Ø BRASS TAG
OPC = PLASTIC CAP (O=ORANGE, R=RED, Y=YELLOW)
(00') RECORDED AS FILE NAME: 08-115C3.DWG



I hereby certify that this land surveying document was prepared and the related survey work was performed by me or under my direct personal supervision and that I am a duly licensed Land Surveyor under the laws of the State of Iowa.
Jeffrey P. Helland 2/6/08
Jeffrey P. Helland
License Number 16264
My license renewal date is December 31, 2009.
All pages or sheets are covered by this seal except:

CORNER	SECTION	TOWNSHIP	RANGE
NE CORNER SE 1/4 SW 1/4	36	89N	12W

Rec.
Book Date