

INDEX 

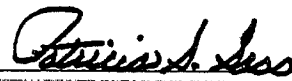
BLACK HAWK COUNTY, IOWA:ss

FEE BOOK # 2003 08092

PROOF

FILED FOR RECORD SEP 25, 2002, AT 10:30 A.M. FEE 1-5.00/

COMPARED



BLACK HAWK COUNTY RECORDER

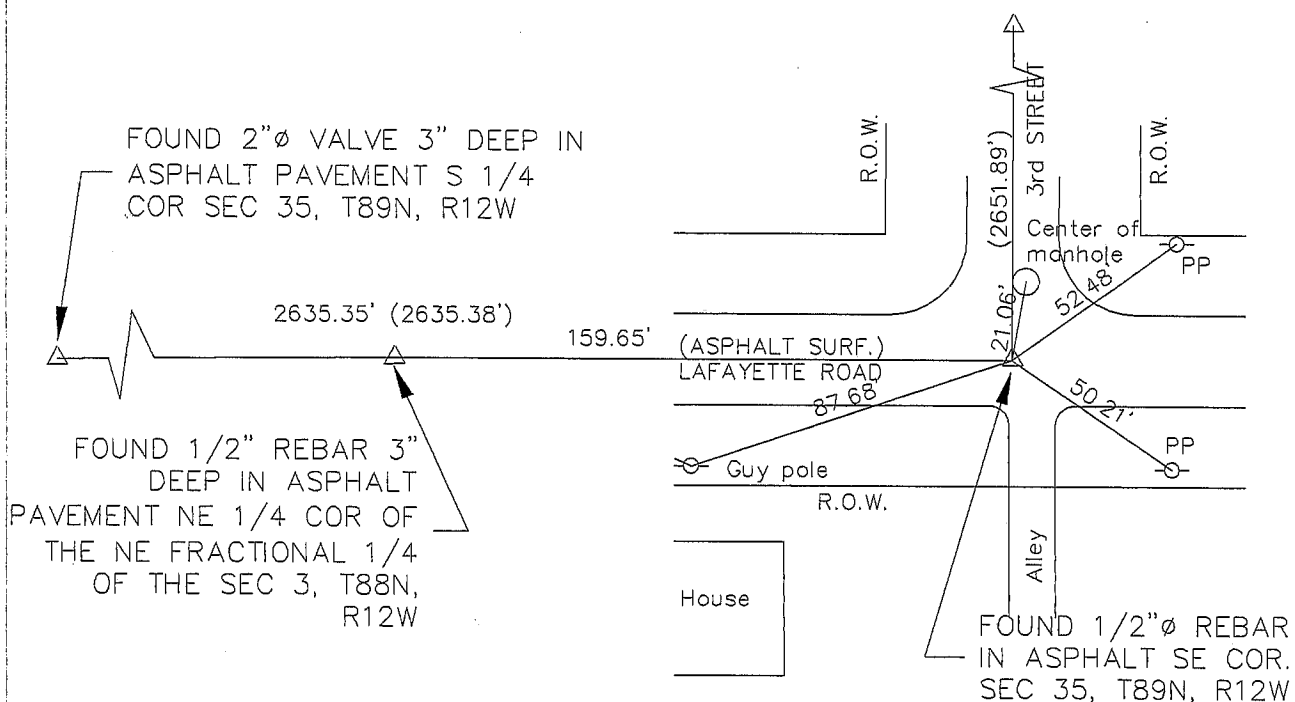
SHOEMAKER &amp; HAALAND 160 HOLIDAY ROAD CORALVILLE, IA 52241

**Shoemaker  
& Haaland**160 HOLIDAY ROAD  
CORALVILLE, IOWA 52241  
PHONE: (319) 351-7150TITLE SECTION CORNER TIES FOR SECTION 35, T89N, R12W  
BLACK HAWK COUNTY, IOWA

DATE	09/20/02
DRAWN	REG
CHECKED	REG
APPROVED	REG
DRAWING	02166601

U.S. PUBLIC LAND SURVEY CORNER CERTIFICATE  
OFLAND SURVEY MOUNMENTS SITUATED IN  
SECTION 35 TOWNSHIP 89 NORTH, RANGE 12 WEST,  
OF THE FIFTH PRINCIPAL MERIDIAN, BLACK HAWK COUNTY, IOWA

## MONUMENT DESCRIPTION AND REMARKS:

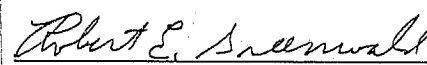
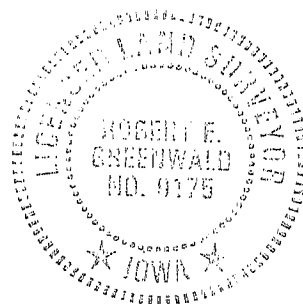
Update Section Corner Ties recorded in Misc Book 298, Page 358 in the Recorder office of  
Black Hawk County, Iowa. Found 1/2"Ø Rebar in Asphalt.

Date of survey, 08/23/02

FOR: CITY OF RAYMOND, IOWA

REQUESTED BY: CITY OF RAYMOND, IOWA

0.00'	MEASURED DISTANCE
(0.00)	RECORDED DISTANCE
R.O.W.	RIGHT OF WAY
PP	POWER POLE

I hereby certify that this land surveying  
document was prepared and the related survey  
work was performed by me or under my direct  
personal supervision and that I am a duly  
Licensed Land Surveyor under the laws of the  
State of Iowa.  
Robert E. Greenwald  
Registration No. 9175  
Date 9/23/02My license renewal date is December 31, 2002.  
All pages or sheets are covered by this seal  
except:

NOT TO SCALE

