

INDEX

BLACK HAWK COUNTY, IOWA:ss

FEE BOOK # 2003 08090

PROOF

FILED FOR RECORD SEP 25 2002 AT 10:30 A.M. FEE 1-5.00/

COMPARED

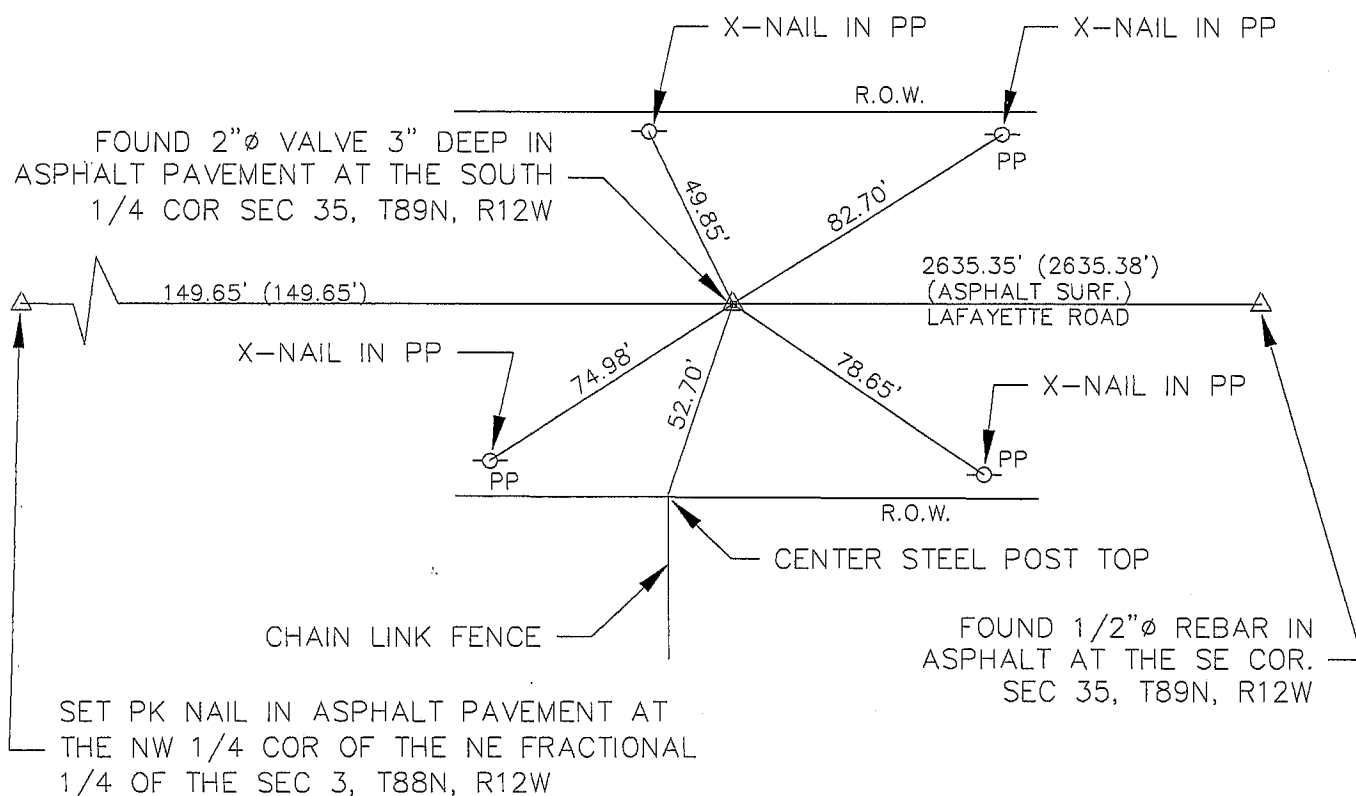
Patricia L. Loo

BLACK HAWK COUNTY RECORDER

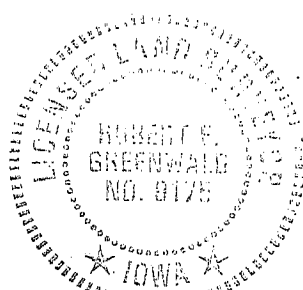
SHOEMAKER & HAALAND 160 HOLIDAY RD CORALVILLE, IA 52241

**Shoemaker
& Haaland**160 HOLIDAY ROAD
CORALVILLE, IOWA 52241
PHONE: (319) 351-7150TITLE SECTION CORNER TIES FOR SECTION 35, T89N, R12W
BLACK HAWK COUNTY, IOWADATE 09/20/02
DRAWN REG
CHECKED REG
APPROVED REG
DRAWING 02166601U.S. PUBLIC LAND SURVEY CORNER CERTIFICATE
OFLAND SURVEY MOUNMENTS SITUATED IN
SECTION 35 TOWNSHIP 89 NORTH, RANGE 12 WEST,
OF THE FIFTH PRINCIPAL MERIDIAN, BLACK HAWK COUNTY, IOWA

MONUMENT DESCRIPTION AND REMARKS:

Update Section Corner Ties recorded in Misc Book 295, Page 168 in the Recorder office of
Black Hawk County, Iowa. Found 2" Valve Rebar 3" deep in Asphalt Pavement.0.00' MEASURED DISTANCE
(0.00) RECORDED DISTANCE
R.O.W. RIGHT OF WAY
PP POWER POLEDate of survey, 08/23/02
FOR: CITY OF RAYMOND, IOWA
REQUESTED BY: CITY OF RAYMOND, IOWAI hereby certify that this land surveying
document was prepared and the related survey
work was performed by me or under my direct
personal supervision and that I am a duly
Licensed Land Surveyor under the laws of the
State of Iowa.*Robert E. Greenwald* 1/23/02
Robert E. Greenwald Date

Registration No. 9175

My license renewal date is December 31, 2002.
All pages or sheets are covered by this seal
except:

NOT TO SCALE

