

Filed for record SEP 13 , 2001 at

Filed for record SEP 13, 2001 at
4:00 P. M. and recorded in Book 344

of MISC Page 26

Christina L. Lee Recorder

FEE	N/C
-----	-----

BLACK HAWK COUNTY ENGINEER

PH.# (319) 833-3008
FAX.# (319) 833-3139

SLSI 9-94
CERT 12-96

Land Survey Monuments situated in Section 35, Township 89 N, Range 12 W, of the Fifth Principal Meridian, BLACK HAWK County, Iowa. Previously recorded in Misc. Book n/a, Page n/a, in County Recorder's Office.

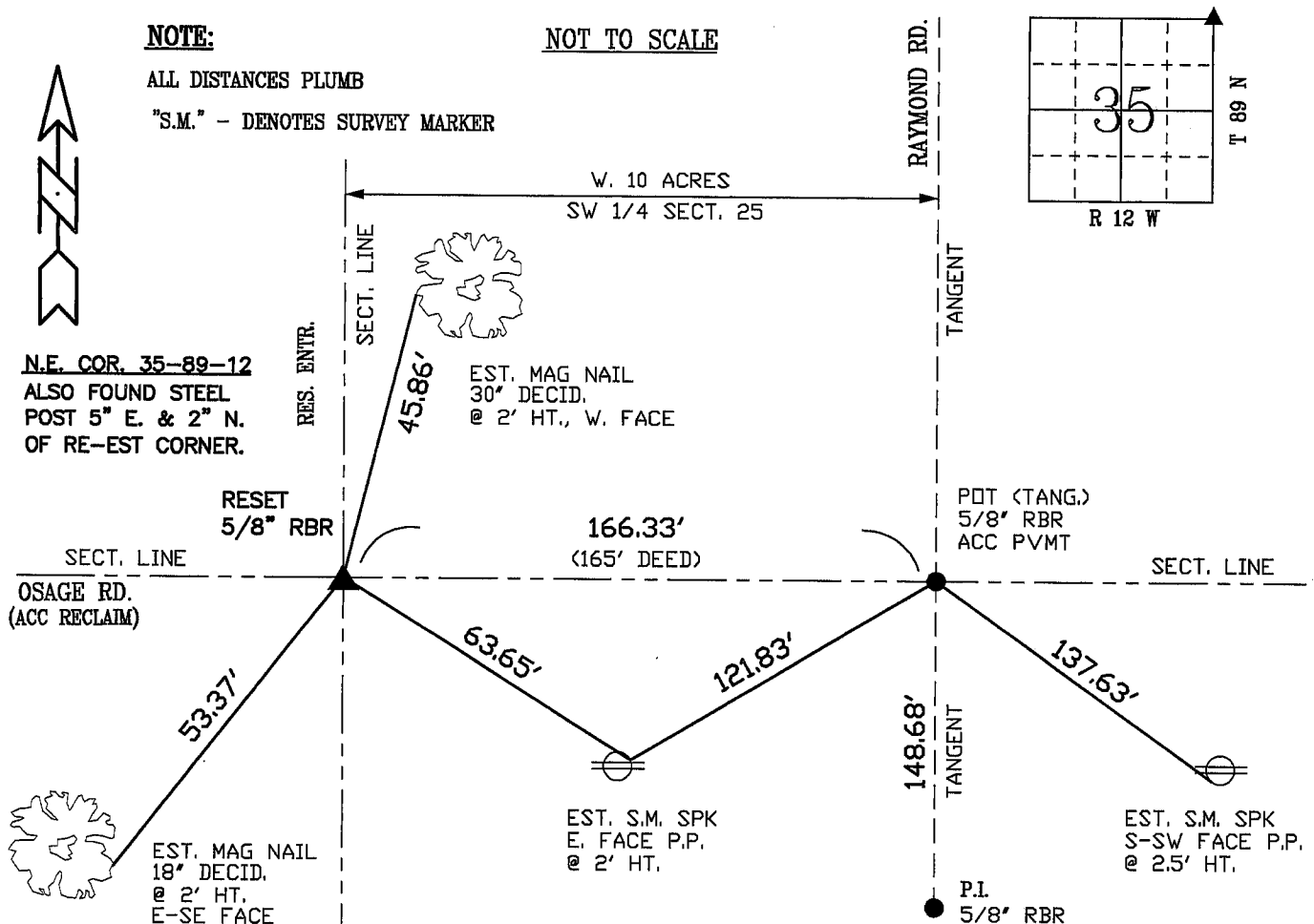
(Show reason for preparing this certificate, the evidence and detailed procedures used in establishing the corner positions and monumentation found or placed.)

Monument Description and Remarks: FOUND 3/4" STEEL PIN (SMOOTH)
PRIOR TO CONSTRUCTION. REF.'ED AND EST. 32' L x 5/8" RBR w/ 2" ALUM.
CAP STAMPED "BLACK HAWK COUNTY LAND CORNER", AT 4' DEEP (ACC RECLAIM)
CORNER RE-EST. DUE TO INTERCHANGE RECONSTRUCTION / PROFILE GRADE
LOWERED. CORNER LOCATED IN +/- CL OF "OSAGE RD.", AND ALIGNED
WITH CENTERLINE (EXTENDED) "RAYMOND ROAD" TO SOUTH.

(Show a minimum of three reference ties to durable physical objects, relevant monuments and physical conditions that will enable recovery of the corner.)

NOT TO SCALE

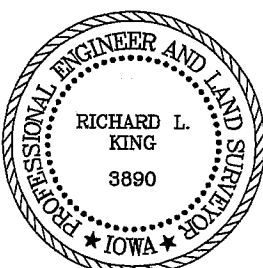
"S.M." - DENOTES SURVEY MARKER



FIELD SURVEY: G.T. & C.W. 08/31/01

PREPARED BY: G.T. 09/10/01

LIST CORNERS TO BE INDEXED



I hereby certify that this land surveying document was prepared and the related survey work was performed by me or under my direct personal supervision and that I am a duly licensed Land Surveyor under the laws of the State of Iowa.

Richard L. King 9/11/01
Richard L. King (date)

License Number 3890

My license renewal date is December 31, 2001

Pages or sheets covered by this seal:

This Land Corner Certificate Only.

<u>Corner</u>	<u>Section</u>	<u>- Township</u>	<u>- Range</u>
N.E.	35	89 N	12 W
N.W.	36	89 N	12 W
S.E.	26	89 N	12 W
S.W.	25	89 N	12 W