



Doc ID: 004608140001 Type: GEN  
Kind: CORNER  
Recorded: 10/18/2011 at 03:08:15 PM  
Fee Amt: \$0.00 Page 1 of 1  
Black Hawk County Iowa  
JUDITH A MCCARTHY RECORDER

File 2012-00006987

PREPARED BY: BLACK HAWK COUNTY ENGINEERS OFFICE  
316 E. FIFTH STREET, ROOM 211 WATERLOO, IOWA 50703

PH.# (319) 833-3008  
FAX# (319) 833-3139

SLSI 9-84  
BHCO 03-09

UNITED STATES PUBLIC LAND SURVEY CORNER CERTIFICATE OF  
Land Survey Monuments situated in Section 35, Township 89 N,  
Range 12 W, of the Fifth Principal Meridian, BLACK HAWK County, Iowa.  
Previously recorded in FILE Book N/A, Page N/A, in County Recorder's Office.  
(Show reason for preparing this certificate): There is No Certificate for the corner on file with County Recorder, per  
Ia. Code 355.11(1)(a).

(Evidence and detailed procedures used in establishing the corner position(s) and monumentation found or placed.)  
Monument Description and Remarks: E. 1/16th COR., NORTH:  
PRIOR TO 'OSAGE RD' RECONSTRUCTION PROJECT (L-0913--73-07), NOTHING WAS FOUND AT 1/16th CORNER  
LOCATION. HOWEVER, RECORD PLATS OF SURVEY TO BOTH SOUTH 'AND' NORTH REFER TO CORNER  
ESTABLISHMENT BY DIVISION(S) OF 1/4 SECTION LINE PER ACCESSORY MONUMENTS (PREV. / ORIG. RIGHT-  
OF-WAY). FND. 1/2" (#4) REBAR WITH PLASTIC CAP (#3862) @ 33.03' NORTH, AND FND. 1/2" (#4) RBR WITH  
PLASTIC CAP (#9961, PER 'ROYAL ACRES' SUBDIVISION IN FILE 2004-16695) @ 32.86' SOUTH. REFER TO  
DETAIL OF PREV. SOUTH R.O.W. CORNER, PER ACQUISITION PLAT IN FILE 2011-010957. LAND CORNER SET  
AT CALC. SPLIT OF NORTH LINE N.E. 1/4 SAID SECTION, PER RECORD SURVEYS AND SAID ACQUISITION PLAT  
REFERENCE (WITH ACQ. PLAT SURVEY BY B.H. COUNTY, PLS #15748). AFTER GRADE & PAVING PROJECT,  
RESET 5/8"x7" (#5) REBAR AS DENOTED & LOCATED @ ±5.85' NORTH OF C.L. PAVING JOINT IN W.B.L.  
WHILE ALIGNED (±) WITH EXISTING FENCE BOTH NORTH & SOUTH, AND TIED CORNER FOR PUBLIC RECORD.

## PLAN VIEW

"NOT TO SCALE"

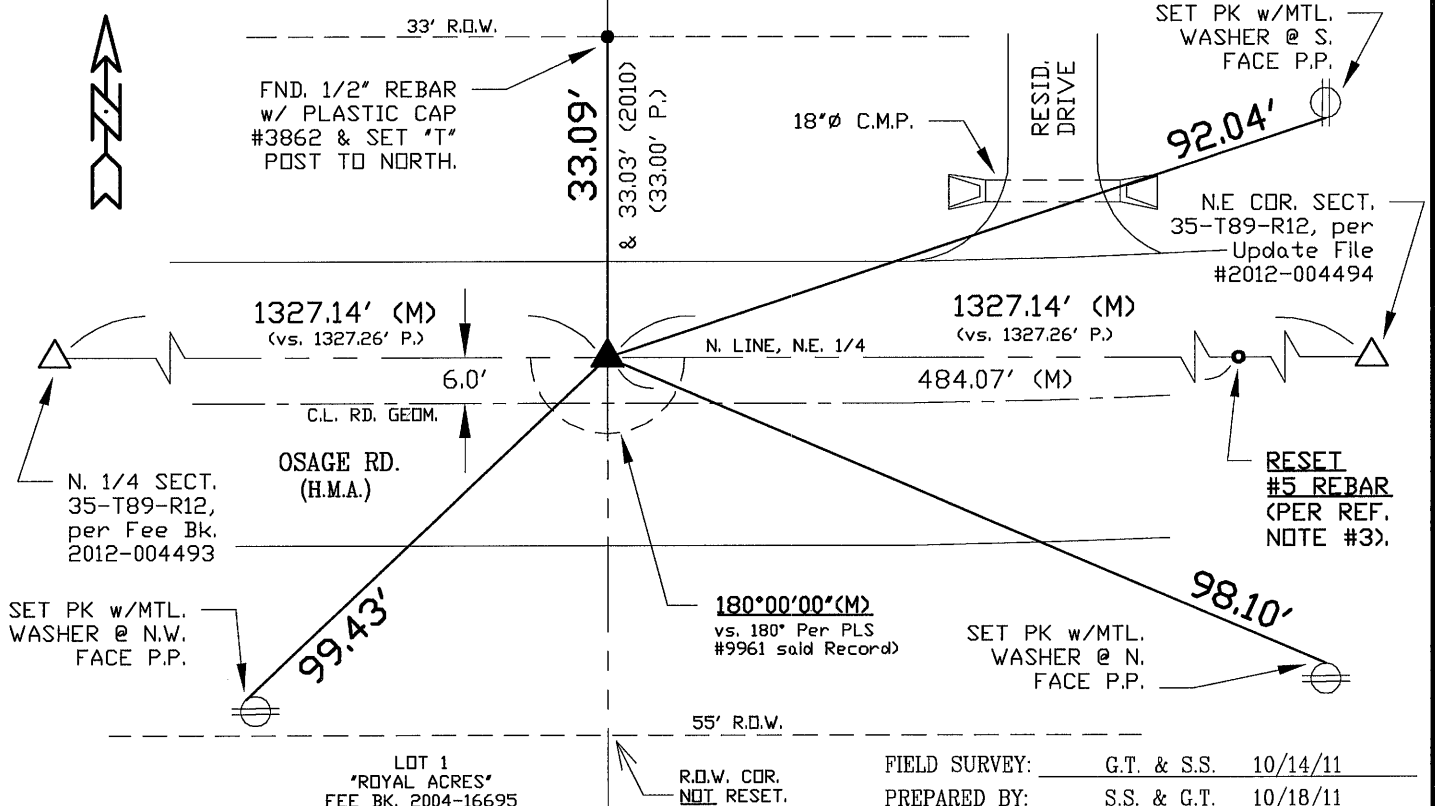
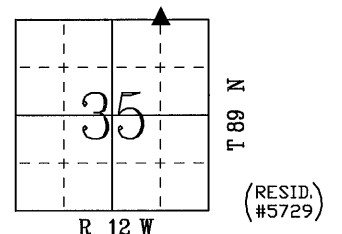
BHco Hist. Ties: N/A

FIELD BOOK: Ties per Topcon 7003i #Z0115

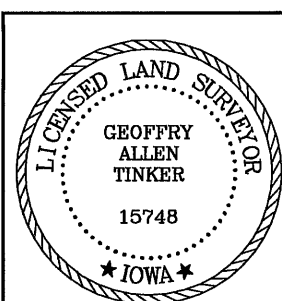
(Show a minimum of three reference ties to durable physical objects, relevant monuments and physical conditions  
that will enable recovery of the corner.)

- 1.> TIES PER EDM MEASURE IN EITHER PRISM "OR" NON-PRISM MODE, WHILE UTILIZING "INDIRECT" MEASURE, WITH ALL DISTANCES PLUMB/HORIZ. (HD), UNLESS DENOTED.
- 2.> SECTION LINE MEASURE REFERS TO "LOCAL GROUND" DISTANCE, PER RTK GPS MEASURE.

- 3.> FOUND BENT #4 REBAR LOC. @ 0.10' N. OF 1/4 LINE DURING 2010 R.O.W. FIELD SURVEY. FOUND ADDITIONAL 1/2" REBAR ALONG LINE TO NORTH WITH PLS CAP #3862, YET NO PLAT-OF-SURVEY OF RECORD FOR PARCEL. RESET AS FOUND w/REF. TO 1/4 LINE MEAS. & ON-LINE, WITH 5/8"x ±7" L. RBR. NEAR S. EDGE A.C.C. AND ALIGNED w/ FENCE TO NORTH.



## CERTIFICATION



I hereby certify that this land surveying document was prepared and the related survey work was performed by me or under my direct personal supervision and that I am a duly licensed Land Surveyor under the laws of the State of Iowa.

*Geoffrey Allen Tinker* 10/18/2011  
Geoffrey Allen Tinker (date)

License Number 15748

My license renewal date is December 31, 2012

Pages or sheets covered by this seal:

This Land Corner Certificate Only.

## LIST CORNERS TO BE INDEXED

Corner	Section -	Township -	Range
N.E. Cor.	35	89 N	12 W
NW1/4-NE1/4			
S.E. Cor.	26	89 N	12 W
SW1/4-SE1/4			

## INDEX OF ABBREVIATIONS

(M) = "Measured" Dimension	"NP" = Reflectorless EDM Meas.
(P) = "Platted" Dimension	"MLM" = Indirect Measure
(R) = "Record" Dimension	"CM" = Concrete Monument
(C) = "Calculated" Dimension	"SM" = Survey Marker Spike/Tag
"IGS" = Iowa Geodetic Survey	"PK" = PK/MAG Nail Brand Style
"WPA" = Works Progress Admin. Survey	
"O" = per George Miller Survey (BHco Surveyor 1858-1860)	
"B" = per John Ball Survey (BHco Surveyor 1866-1891)	
"N" = per Nathan Barber Survey (BHco Surveyor 1908-1931)	