

*Patricia A. Lero*

BLACK HAWK COUNTY RECORDER

KESS &amp; ASSOCIATES INC

Kirk D. Eschliman, P.L.S. Iowa Lic. No. 9961, 723 Broadway Street, Waterloo, Iowa 50703 - Phone: 319-234-0509

UNITED STATES PUBLIC LAND SURVEY CORNER CERTIFICATE  
OFLAND SURVEY MONUMENTS SITUATED IN SECTION THIRTY-FIVE (35), TOWNSHIP EIGHTY-NINE (89) NORTH  
RANGE TWELVE (12) WEST, OF THE FIFTH PRINCIPAL MERIDIAN, BLACK HAWK COUNTY, IOWA.  
PREVIOUSLY RECORDED IN (NOT PREVIOUSLY RECORDED) (BOOK, PAGE, DOCUMENT NUMBER, ETC.) IN THE COUNTY RECORDER'S OFFICE.

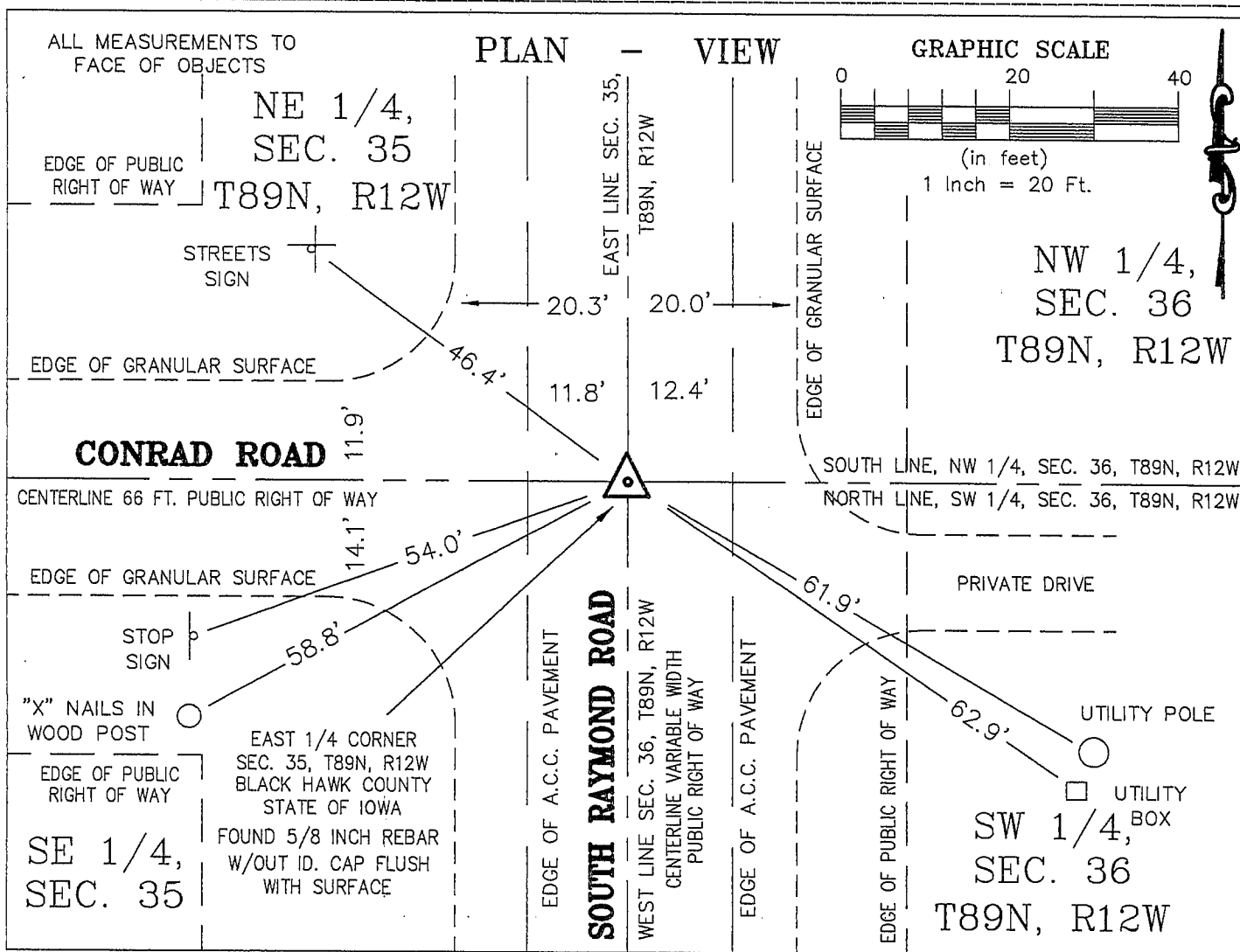
(SHOW REASON FOR PREPARING THIS CERTIFICATE, THE EVIDENCE AND DETAILED PROCEDURES USED IN ESTABLISHING THE CORNER POSITIONS AND MONUMENTATION FOUND OR PLACED.)

## MONUMENT DESCRIPTION AND REMARKS:

CURRENT SECTION CORNER CERTIFICATE NOT ON FILE IN THE BLACK HAWK COUNTY ENGINEER'S OFFICE

FOUND 5/8 INCH REBAR, FLUSH WITH SURFACE OF ASPHALTIC CONCRETE PAVEMENT SURFACED

SOUTH RAYMOND ROAD. (CURRENT LOCATION AGREES WITH W.P.A. REFERENCE SURVEY NOTES)

I HEREBY CERTIFY THAT THIS LAND SURVEYING DOCUMENT  
WAS PREPARED AND RELATED SURVEY WORK WAS  
PERFORMED BY ME OR UNDER MY DIRECT PERSONAL  
SUPERVISION AND THAT I AM A DULY LICENSED LAND  
SURVEYOR UNDER THE LAWS OF THE STATE OF IOWA.*Kirk D. Eschliman* DATE: 08/03/2005  
KIRK D. ESCHLIMAN, P.L.S. IOWA LIC. NO. 9961  
MY LICENSE RENEWAL DATE IS DECEMBER 31, 2005  
PAGES OR SHEETS COVERED BY THIS SIGNATURE & SEAL: SHEET 1 OF 1FOR: GARY J. & BARBARA A. SCHMITZ  
5903 CONRAD ROAD  
WATERLOO, IOWA 50703REQ. BY: GARY J. SCHMITZ  
WATERLOO, IOWAKESS & ASSOCIATES, INC.  
PROFESSIONAL LAND SURVEYORS : 723 BROADWAY, WATERLOO, IOWA 50703-5811  
DATE: 8/03/2005 C.A.D.D. FILE: 03B68SCC2.DWG PROJECT NO.: 03B68

## List of corners to be indexed:

Corner	Section	Township	Range
E 1/4	35	T89N	R12W

