

\*Ret: VJ Engineering 1501 Technology Prkwy Suite 100 CF

## United States Public Land Survey Corner Certificate of

Land Survey Monuments situated in Section No. 34, Township No. 89 North,  
Range No. 12 West, of the Fifth Principal Meridian, Black Hawk County, Iowa  
Previously recorded in none.

Show reason for preparing this certificate, the evidence and detailed procedures used in establishing the corner positions and monumentation found or placed.)

Monument Description and Remarks: Southwest Corner, Southeast Quarter, Southwest Quarter, Section 34 T89N R12W

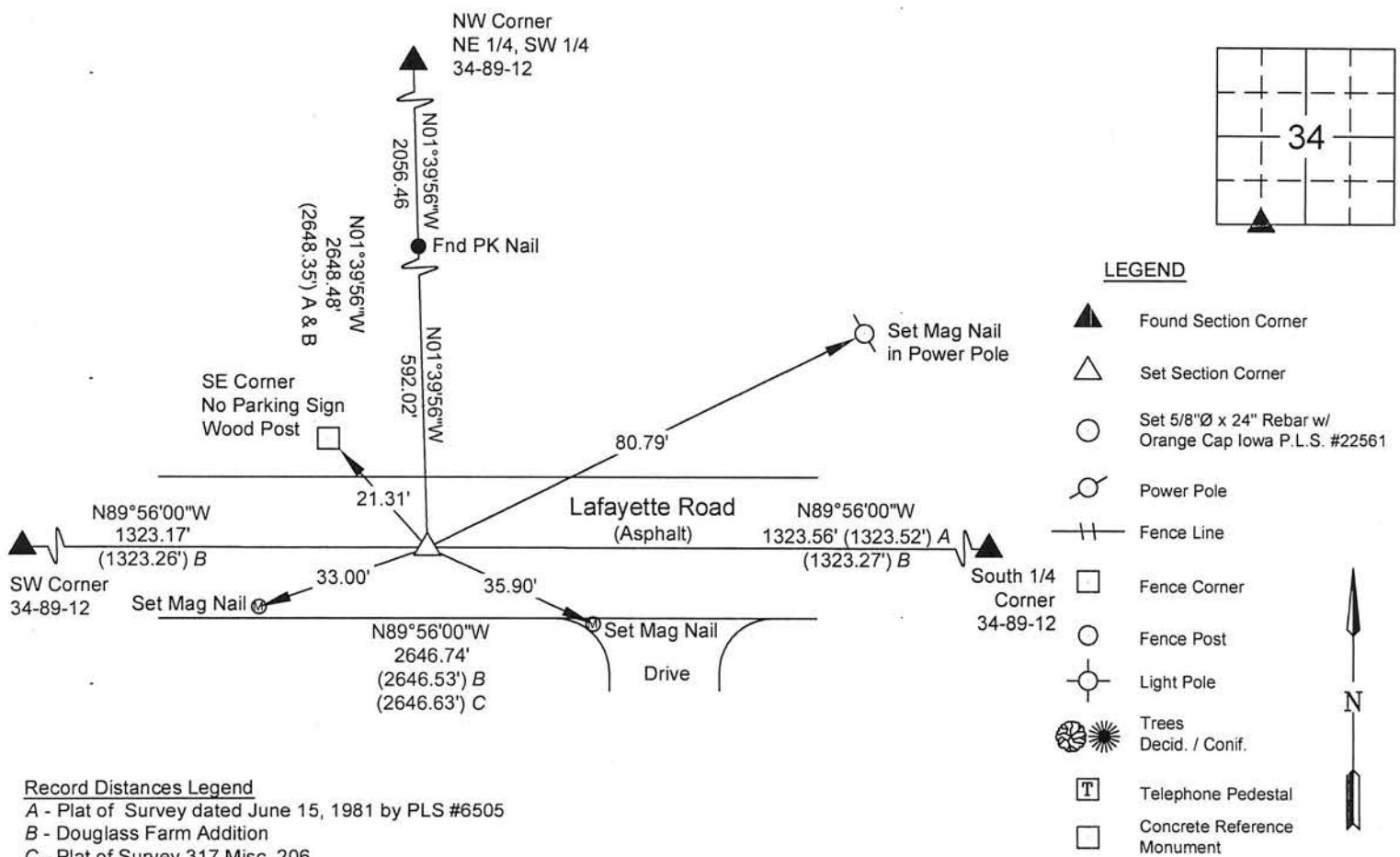
Set Mag Nail in asphalt paving at the intersection of a line from the SW Corner to the South 1/4 and the extension of a line from the NW Corner, NE 1/4, SW 1/4 thru a found PK nail per Plat of Survey 317 Misc 206.

Corner was used for a survey in the NE 1/4 SW 1/4 of Section 34 T89N R12W.

This corner certificate is being prepared due to the monumentation of said corner, no previous corner certificate recorded.

### PLAN - VIEW

(Show a minimum of three reference ties to durable physical objects, relevant monuments and physical conditions that will enable recovery of the corner.)



I hereby certify that this land surveying document was prepared and the related survey work was performed by me or under my direct personal supervision and that I am a duly licensed Land Surveyor under the laws of the State of Iowa.

Matthew A. Kofta 4-24-15  
Matthew A. Kofta, P.L.S. Date

License Number 22561  
My license renewal date is December 31, 2016  
Pages or sheets covered by this seal: 1

#### List Corner to be Indexed

Corner	Section	Twp	Range
Southwest Corner	34	89 North	12 West
Southeast Quarter			
Southwest Quarter			



VJ Engineering  
1501 Technology Parkway  
Cedar Falls, Iowa - 319-266-5829

Section Corner  
Reference Ties

file no.  
158013  
drawn by  
MAK  
date  
4/24/15