

Paul Helland

PAUL HELLAND

Jeffrey P. Helland, 1107 Technology Parkway, Cedar Falls, Iowa 50613-6951, (319)-266-0161

UNITED STATES PUBLIC LAND SURVEY CORNER CERTIFICATE OF

LAND SURVEY MONUMENTS SITUATED IN SECTION NO. 34, TOWNSHIP NO. 89 NORTH, RANGE NO. 12 WEST OF THE FIFTH PRINCIPAL MERIDIAN, BLACK HAWK COUNTY, IOWA.

PREVIOUSLY RECORDED IN BOOK _____, PAGE _____.

(SHOW REASON FOR PREPARING THIS CERTIFICATE, THE EVIDENCE AND DETAILED PROCEDURES USED IN ESTABLISHING THE CORNER POSITIONS AND MONUMENTATION FOUND OR PLACED.)

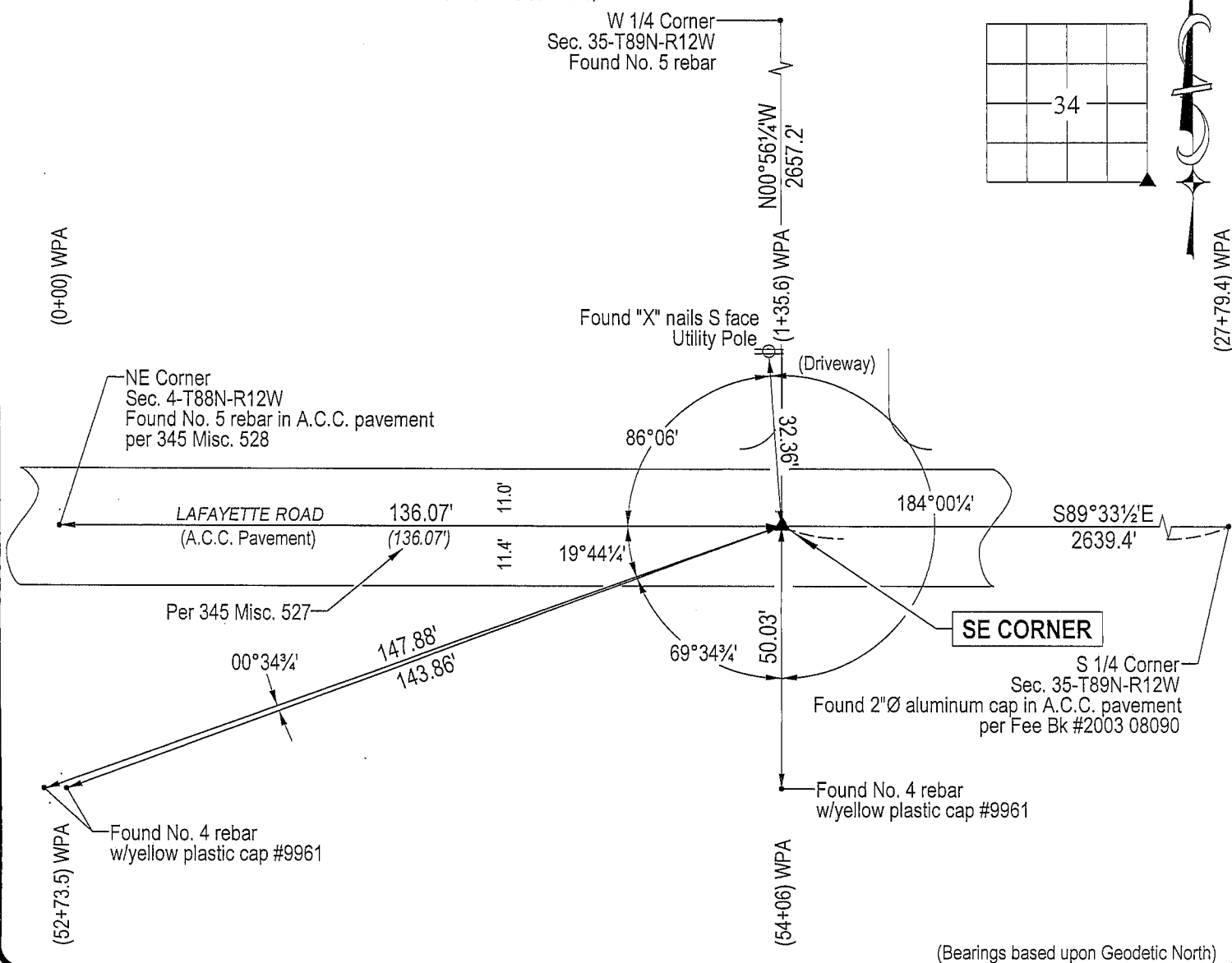
MONUMENT DESCRIPTION AND REMARKS:

No corner certificate on file. Survey completed in the SW 1/4 of Sec. 35-T89N-R12W.

SE CORNER: All Black Hawk County Engineer reference ties obliterated. WPA chaining notes dated 7/18/1941 along the North of Sec. 4-T88N-R12W calls for 132.5' between the SE Corner of Sec. 34-T89N-R12W and the NE Corner of Sec. 4-T88N-R12W. WPA chaining notes dated 7/18/1941 along the South of Sec. 35-T89N-R12W calls for 135.6' between the SE Corner of Sec. 34-T89N-R12W and the NE Corner of Sec. 4-T88N-R12W. Found No. 5 rebar 0.2' below A.C.C. pavement @ SE CORNER of Sec. 34-T89N-R12W being 136.07' East of the NE Corner of Sec. 4-T88N-R12W (found No. 5 rebar) per 345 Misc. 528.

PLAN VIEW

(SHOW A MINIMUM OF THREE REFERENCE TIES TO DURABLE PHYSICAL OBJECTS, RELEVANT MONUMENTS AND PHYSICAL CONDITIONS THAT WILL ENABLE RECOVERY OF THE CORNER.)

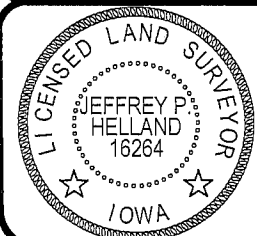


(Bearings based upon Geodetic North)



HELLAND ENGINEERING & SURVEYING, LTD.
1107 Technology Parkway
Cedar Falls, Iowa 50613-6951
(319)-266-0161

(00.00) - Recorded As File Name: 04-361c1.drg



I hereby certify that this land surveying document was prepared and the related survey work was performed by me or under my direct personal supervision and that I am a duly licensed Land Surveyor under the laws of the State of Iowa.
Jeffrey P. Helland 1/25/05
Jeffrey P. Helland
License Number 16264
My license renewal date is December 31, 2005.
All pages or sheets are covered by this seal except:

LIST CORNERS TO BE INDEXED			
CORNER	SECTION	TOWNSHIP	RANGE
SE CORNER	34	89N	12W

Rec.