

PREPARED BY: BLACK HAWK COUNTY ENGINEERS OFFICE
316 E. FIFTH STREET, ROOM 211 WATERLOO, IOWA 50703

PH.# (319) 833-3008
FAX# (319) 833-3139
SLSI 9-94
BHCO 03-09

UNITED STATES PUBLIC LAND SURVEY CORNER CERTIFICATE OF
Land Survey Monuments situated in Section 34, Township 89 N,
Range 12 W, of the Fifth Principal Meridian, BLACK HAWK County, Iowa.
Previously recorded in Misc. Book 342, Page 702, in County Recorder's Office.

(Show reason for preparing this certificate): The corner monument has been Replaced or Modified, per Ia. Code 355.11(1)(c)

(Evidence and detailed procedures used in establishing the corner position(s) and monumentation found or placed.)

Monument Description and Remarks: E. 1/16th COR., NORTH;
PRIOR TO "OSAGE RD" RECONSTRUCTION PROJECT (L-0913--73-07), FOUND 1/2" (#4)
REBAR WITH ORANGE CAP (#6505) PER CURRENT RECORD. TEMP. REF. CORNER PER RTK
GPS, AND UTILIZED DURING R.O.W. SURVEY (2010) FOR PROJECT PER ACQUISITION PLAT
DETAILS IN FILE 2011-010972. AFTER GRADE & PAVING PROJECT, RESET 5/8" x ±7'L
(#5) REBAR AT REF. LOCATION ON N. LINE OF N.E. 1/4 SAID SECTION (PER CURRENT
RECORD). ALL PREV. RECORD TIES DESTROYED, AND NEW CORNER TIES ESTABLISHED
AND RETIED FOR UPDATED RECORD. RIGHT-OF-WAY CORNER NORTH SET PER SAID
ACQUISITION PLAT REFERENCE, PER PRELIM. FIELD WORK BY B.H. CO. (PLS #15748) IN 2010.
R.O.W. CORNER UTIL. AS REF. TIE, AND SET AS REQUESTED BY LAND OWNER.

PLAN VIEW

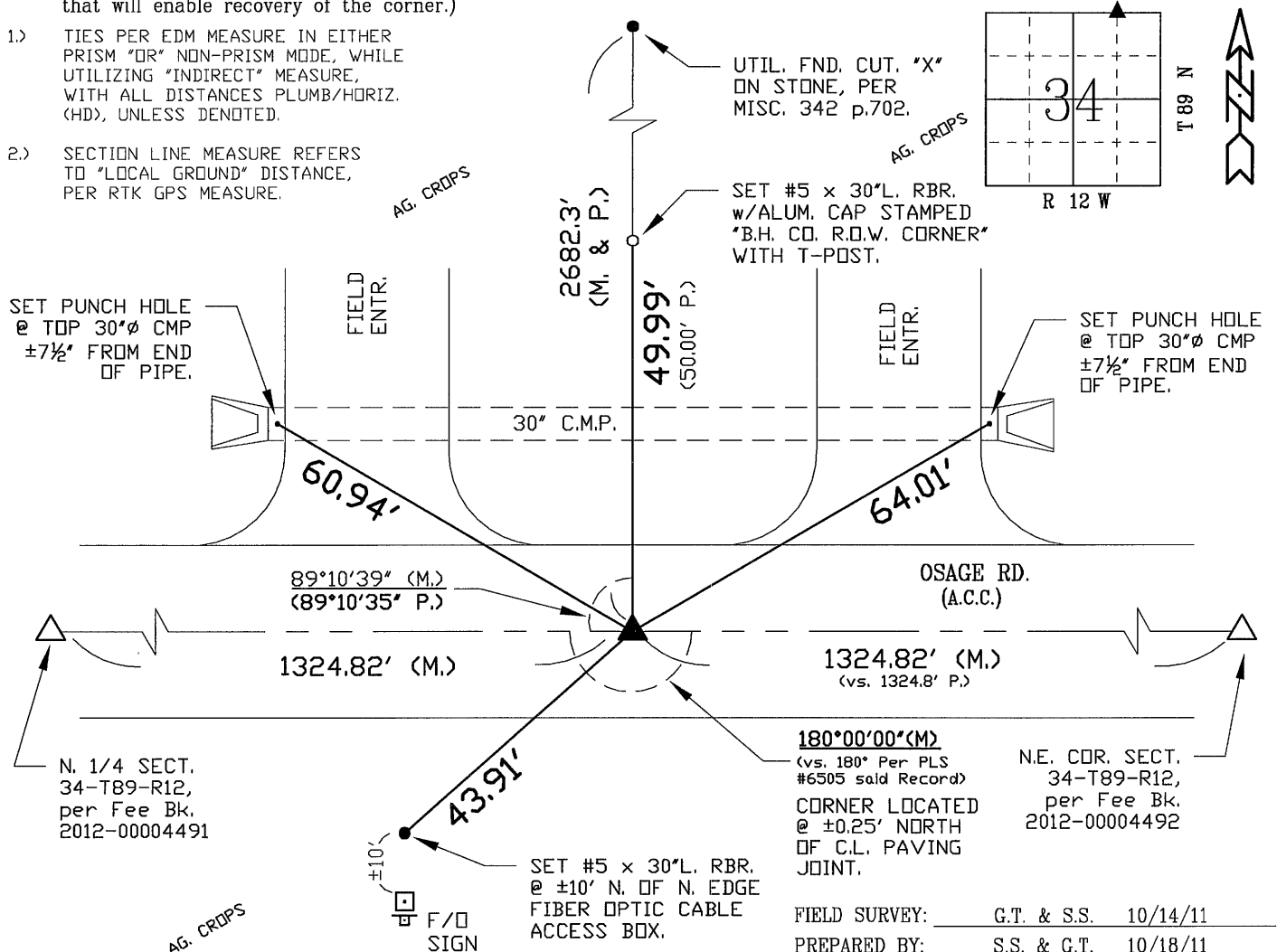
"NOT TO SCALE"

BHco Hist. Ties: N/A
FIELD BOOK: Ties per Topcon 7003i #Z0115

(Show a minimum of three reference ties to durable physical objects, relevant monuments and physical conditions that will enable recovery of the corner.)

- 1.) TIES PER EDM MEASURE IN EITHER PRISM "OR" NON-PRISM MODE, WHILE UTILIZING "INDIRECT" MEASURE, WITH ALL DISTANCES PLUMB/HORIZ. (HD), UNLESS DENOTED.

- 2.) SECTION LINE MEASURE REFERS TO "LOCAL GROUND" DISTANCE, PER RTK GPS MEASURE.



CERTIFICATION



I hereby certify that this land surveying document was prepared and the related survey work was performed by me or under my direct personal supervision and that I am a duly licensed Land Surveyor under the laws of the State of Iowa.

Geoffrey Allen Tinker 10/18/2011
Geoffrey Allen Tinker (date)

License Number 15748

My license renewal date is December 31, 2012

Pages or sheets covered by this seal:

This Land Corner Certificate Only.

LIST CORNERS TO BE INDEXED

Corner	Section -	Township -	Range
N.E. Cor.	34	89 N	12 W
NW1/4-NE1/4			
S.E. Cor.	27	89 N	12 W
SW1/4-SE1/4			

INDEX OF ABBREVIATIONS

(M) = "Measured" Dimension
(P) = "Platted" Dimension
(R) = "Record" Dimension
(C) = "Calculated" Dimension
(G) = Iowa Geodetic Survey
(WPA) = Works Progress Admin. Survey
(G) = per George Miller Survey (BHco Surveyor 1858-1860)
(B) = per John Ball Survey (BHco Surveyor 1866-1891)
(N) = per Nathan Barber Survey (BHco Surveyor 1908-1931)
(NP) = Reflectorless EDM Meas.
(MLM) = Indirect Measure
(CM) = Concrete Monument
(SM) = Survey Marker Spike/Tag
(PK) = PK/MAG Nail Brand Style