

Doc ID: 004573200001 Type: GEN  
 Kind: CORNER  
 Recorded: 09/12/2011 at 01:01:56 PM  
 Fee Amt: \$7.00 Page 1 of 1  
 Black Hawk County Iowa  
 JUDITH A MCCARTHY RECORDER  
 File **2012-00004490**

Recorded By: Michael R. Fagle, P.L.S.

AECOM, 501 Sycamore St., Suite 222, Waterloo, Iowa 50703

1-319-232-6531

## UNITED STATES PUBLIC LAND SURVEY CORNER CERTIFICATE OF

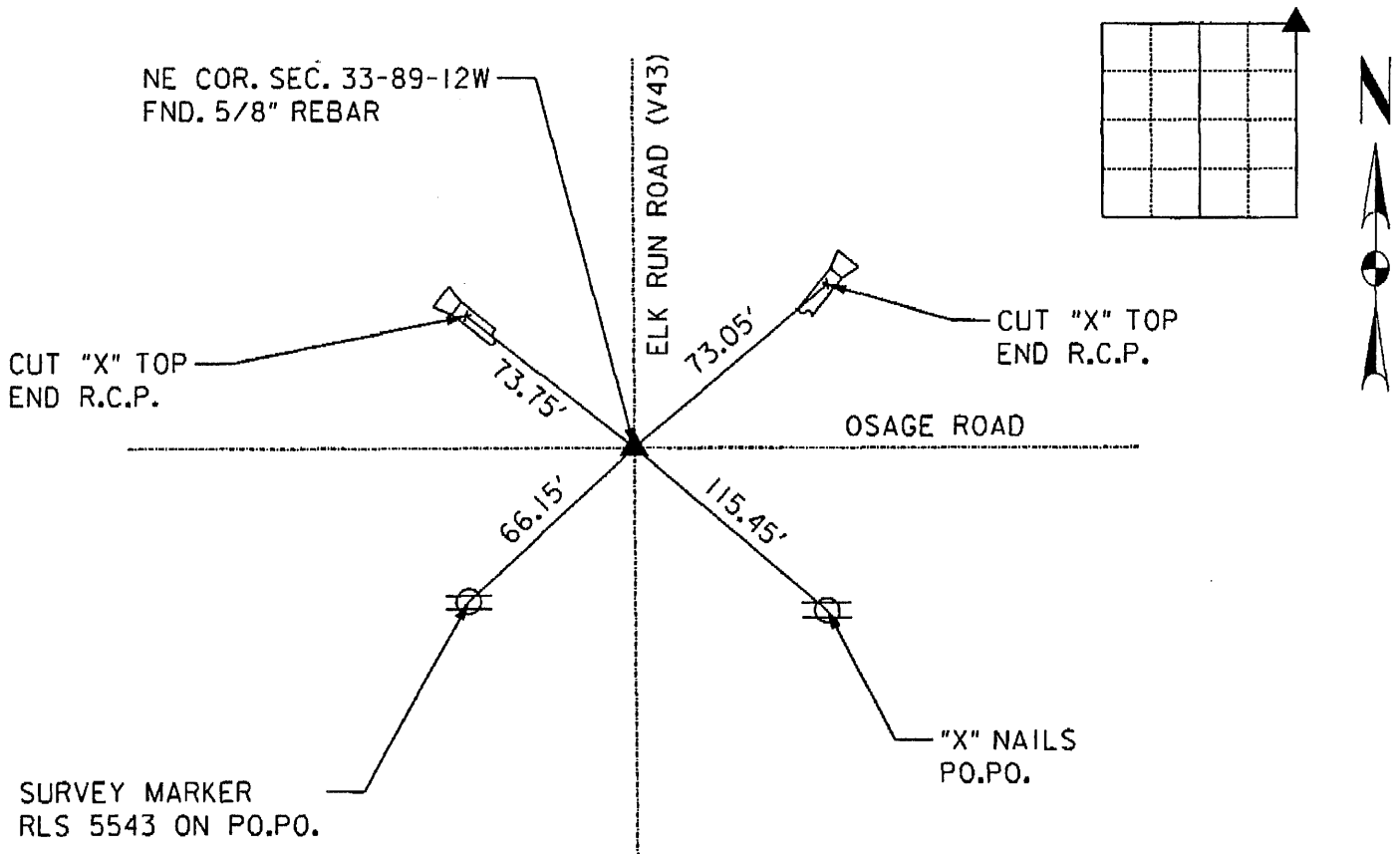
Land Survey Monuments situated in Section 33, Township 89 North,  
 Range 12 West, of the Fifth Principal Meridian, Black Hawk  
 County, Iowa. Previously recorded in File 2004 11437  
 in County Engineer's Office. (Book, Page, Document Number, etc.)

(Show reason for preparing this certificate, the evidence and detailed procedures used in establishing the corner positions and monumentation found or placed.)

Monument Description and Remarks: Found 5/8" rebar from existing ties at the the Northeast corner of Section 33, Township 89 North, Range 12 West of the 5th P.M., after the Black Hawk County Osage Road Improvements (Project L-0913--73-07) was completed, the corner was tied out to new reference points.

### PLAN - VIEW

(Show a minimum of three reference ties to durable physical objects, relevant monuments and physical conditions that will enable recovery of the corner.)



	<p>I hereby certify that this Land Surveying document was prepared by me or under my direct personal supervision and that I am a duly Licensed Land Surveyor under the laws of the State of Iowa.</p> <p><u>Michael R. Fagle</u> <u>9-06-2011</u>          MICHAEL R. FAGLE Date</p> <p>License number 8505</p> <p>My license renewal date is December 31, 2012</p> <p>Pages or sheets covered by this seal:</p> <p style="text-align: center;">THIS SHEET</p>	<p style="text-align: center;">List Corners to be Indexed</p> <table border="1" style="width: 100%; border-collapse: collapse;"> <thead> <tr> <th style="text-align: left;">Corners</th> <th style="text-align: left;">Section</th> <th style="text-align: left;">Twp</th> <th style="text-align: left;">Range</th> </tr> </thead> <tbody> <tr> <td>Northeast Corner</td> <td>33</td> <td>T 89 N</td> <td>R 12 W</td> </tr> </tbody> </table>	Corners	Section	Twp	Range	Northeast Corner	33	T 89 N	R 12 W
Corners	Section	Twp	Range							
Northeast Corner	33	T 89 N	R 12 W							