

SC  
MISC  
INDEX  
MARGIN  
PROOF  
COMPARE

BLACK HAWK COUNTY IOWA:SS  
Filed for record MAR 2, 2001 at  
4:00 P.M. and recorded in Book 342  
of MISC at Page 2  
RECORDER

017282

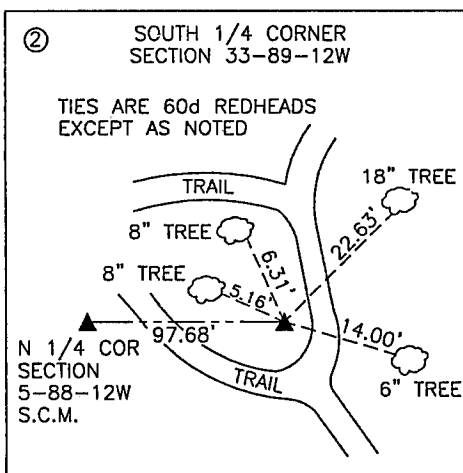
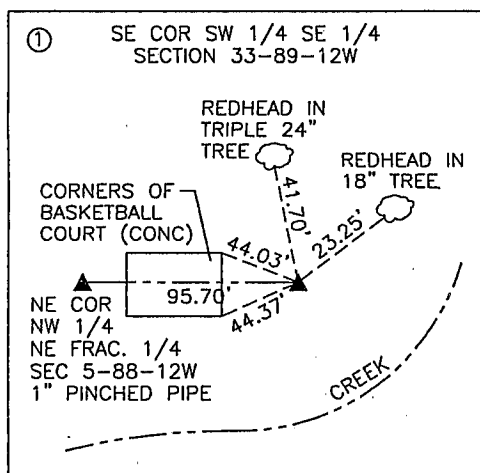
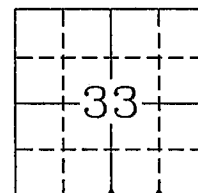
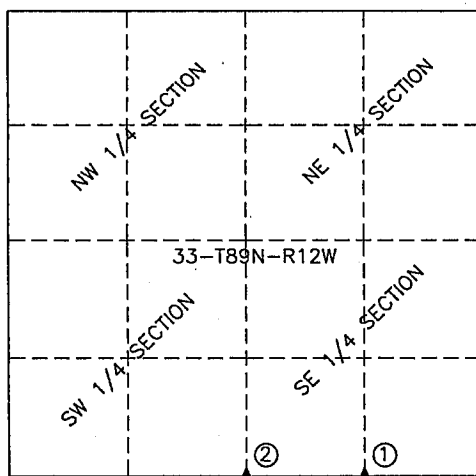
FEE 1-5.00/  
AMENT INC 5825 DRY CREEK LN  
PO BOX 10047 CEDAR RAPIDS IA 52410

PREPARED BY: GREGG E. SAMPSON, AMENT, INC., 5825 DRY CREEK LANE NE, CEDAR RAPIDS, IA (319) 378-1401

# UNITED STATES PUBLIC LAND SURVEY CORNER CERTIFICATE OF

Land Survey Monuments situated in Section 33 Township 89 NORTH Range  
12 WEST of the Fifth Principal Meridian BLACK HAWK County, Iowa.  
Previously recorded in N/A in County Recorder's Office.

Monument Description and Remarks: 1) FOUND 12" LIMESTONE 10" DEEP, STONE CORRESPONDS WITH PLATTED  
DIMENSIONS AND STONE SHOWN ON PLAT OF WILSHIRE HEIGHTS AND COUNTY ENGINEER'S FIELD NOTES. 2) FOUND STANDARD  
CONCRETE MONUMENT. DISTANCES FOR 2) SLOPE CHAINED



## LEGEND

▲ SECTION CORNER

I hereby certify that the survey work was completed and this certificate was prepared by me or under my direct personal supervision and that I am a duly licensed land surveyor under the laws of the state of Iowa.

Signature: Gregg E. Sampson  
Gregg E. Sampson, Iowa Licensed Land Surveyor No. 14809

Date: 2-23-2001 License. No. 14809  
License renewal December 31, 2002



## Land Corners to be Indexed

Corners	Section	Twp	Range
① SE COR SW 1/4 SE 1/4	33	89N	12W
② S 1/4	33	89N	12W

BOOK 0342 PAGE 002